

JOURNAL 1927

JAMES W. BEE

NOTES 1927

1-4-27

While on a hike near the mouth of Spring Creek at the east end of mud lake, recorded an interesting evening sunset picture in which there is found the secondary sun spot in the clouds to one side creating a very weird site. This secondary spot is encircled with an oily halo. I have observed several of this double sunset in years past. The channel leading out through the lake flats is generally kept open while the ground on either side is solid which allows one to traverse the country. There are many areas where the deep mud does not allow one to go but if one is willing to wade hip deep and exert a good ^{deal} of energy.

no record

1-2-4-27

2-15-27

at this time of year one finds many cedar and Bohemian wax wings in the city and particularly in the outskirts of the city among the orchards where apples have been allowed to remain upon the trees during the winter. The picture 2-15-27 shows a couple of Waxwings in an apple orchard on 8th So and 5th west in Provo city, Utah. At this time there were some 400 of these birds present. They seemed fearless and would allow one to walk beneath the trees without disturbing them. However when they did decide to go they left in unison. They were particularly concerned about the dead and frozen apples on these trees. In Provo City one boy cruelly shot 8 of these birds from a tree in front of our home. Picture 2-15-27 is of the Western Evening Grosbeak taken from a tree at home in Provo City. They seemed to prefer the boxelder and white ash leaves. These Grosbeaks remain in Provo for some time but leave later in the spring. This bird also suffers from the flippers and guns in the city. One frequently finds where some one has shot these birds from trees. They seem to ignore the other birds as they fall from the trees as they are shot. The numbers of Grosbeaks seem to fluctuate from one year to the next year.

1-2-15-27

2-2-15-27

NOTES 1927

2-4-27

While on a hike near the mouth of Spring Creek at the east end of mud lake, recorded an interesting evening sunset picture in which there is found the secondary sun spot in the clouds to one side creating a very weird site. This secondary spot is encircled with an oily halo. I have observed several of this double sunset in years past. The channel leading out through the lake flats is generally kept open while the ground on either side is solid which allows one to traverse the country. There are many areas where the deep mud does not allow one to go but if one is willing to wade hip deep and exert a good deal of energy.

no record

1-2-4-27

2-15-27

at this time of year one finds many cedar and Bohemian wax wings in the city and particularly in the outskirts of the city among the orchards where apples have been allowed to remain upon the trees during the winter. The picture 2-15-27 shows a couple of Waxwings in an apple orchard on 8th So and 5th West in Provo City, Utah. At this time there were some 400 of these birds present. They seemed fearless and would allow one to walk beneath the trees without disturbing them. However when they did decide to go they left in unison. They were particularly concerned about the dead and frozen apples on these trees. In Provo City one boy cruelly shot 8 of these birds from a tree in front of our home. Picture 2-15-27 is of the Western Coenonyx Grackles taken from a tree at home in Provo City. They seemed to prefer the boxelder and white ash leaves. These Grackles remain in Provo for some time but leave later in the spring. This bird also suffers from the flippers and guns in the city. One frequently finds where some one has shot these birds from trees. They seem to ignore the other birds as they fall from the trees as they are shot. The numbers of Grackles seem to fluctuate from one year to the next year.

1-2-15-27

2-2-15-27

3-1-27

mouth of Spring Creek at the east end of Mud Lake south of Provo City. Picture no 1-3-1-27 shows a ^{early} spring group of ducks. This area is a favorite place for the ducks to feed in the evening and rest during the day, providing they are not disturbed. The many creeks and spring flood down through this area and keep the waters partially open during the winter time.

1-3-1-27



1-4-22-27

4-22-27

Picture 1-4-22-27 taken on a hike of one of the grades at Maysen School. The students were divided into small groups to study birds etc. Fay Cottam, is seated on the ground. Edward Peterson the boy standing who was a close friend of mine. As I recall Whitcatt was our teacher at this time. 6th Gr. Nature hike



1-5-6-27

5-6-27

This picture was taken sometime during the spring but do not have date so am including under this date for reference. The picture 1-5-6-27 shows Mt. Timpanogas taken near Carterville in the Provo River bottoms north of Provo City. Picture no 2-5-6-27 was also taken earlier in the year but do not have date of same. It was taken north of Provo and shows the California Sea Gulls feeding in a flooded field. This is a typical scene in early spring when these birds come into our field and hunt for worms and insects as the ground is plowed for spring planting. Base 15th dugway.



2-5-6-27







made trip in mountains east of Provo. W. White of Provo made the trip with me. This pictures were taken sometime during the spring but do not recall the month or date but am including them under this date entrance in order that they may receive a field number. The itinerary included state canyon, head of right hand fork to divide, gained entrance to Provo Peak ridge from the divide, hence north along ridge to Provo Peak, hence down east side to Provo Peak Cirque, hence down cirque to a point below falls where we camped the first night, next morning up side gulch and over into the canyon of the uppermost cirque, hence on a horizontal level to Windy Pass, hence down canyon to South Fork, hence down South Fork to Vivion Park where we got a ride back to Provo City down Provo Canyon. The trip was made without any bedding or tent. All we possessed was food, matches and a knife. At our first night camp we improvised a shelter made with aspen trees and a bed of aspen leaves. Kept a fire in front of shelter to keep warm. Each had a shift to watch and keep fire a going. Our greatest fear was imaginary bear, coyotes, cats etc. but pulled thru ok. If we had experienced a rainy night we probably would have had a different story to tell but as it was the sky was clear. Next morning we washed in icy water so cold that our facial expression froze when water was placed on face. Our tired and weary eyes and face lines did not thaw out until late that same afternoon. The pictures tell a more interesting story and describes the country more thoroughly than I could describe. Picture (1-6-1-27) was

1-6-1-27

2-6-1-27

3-6-1-27

4-6-1-27

5-6-1-27

6-6-1-27

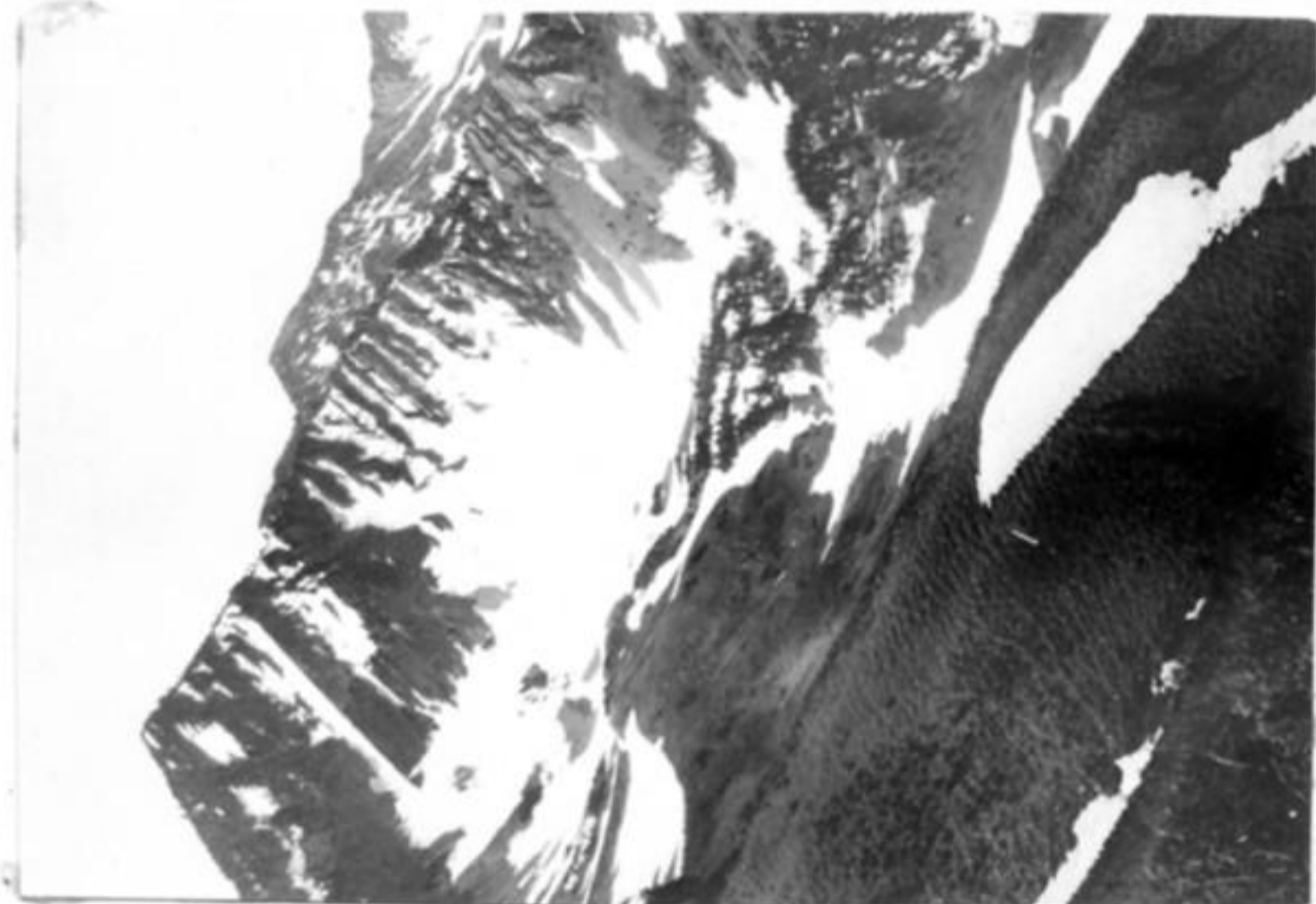
7-6-1-27

8-6-1-27

taken after we had gain the southern end of the Provo Peak ridge and had worked some way beyond toward Provo Peak. It was taken shooting south along the crest of the ridge. The east side of this ridge shows considerable snow deposit. From Provo City the Provo Peak ridge appears to be quite level on top but when one actually is on the ridge he finds that there is considerable ups and downs that do not show from the valley. It is a long ridge and seems endless. We ate our dinner in the conifers at the south end of the ridge above the Slate Canyon-right hand ^{fork} divide. The growth on the west side of the ridge bears evidence of sever winds as the trees have limbs on the lee side only. Picture (2-6-1-27) was taken shooting to the east and shows the endless succession of hills to the east. The junction of the left & right hand forks of Hobbie Creek ~~are~~ is found at the extreme right-hand side of the picture. The height of the ridges seem to be about all the same. The east side of the left hand fork shows results of the glaciers and waters as they flowed down from the Provo Peak ridge and ate into the mountain side. Picture no (3-6-1-27) is another shot similar to no 1-6-1-27 Here one can see Utah Lake over the top of the Buckley mountain. The most interesting thing of this picture is the snow cornices that still remain upon the east leeward side of the ridge. They have melted down considerable and are now below

the ridge level proper. This is probably due to either melting or to the fact that this accumulation of snow has sufficient weight to actually move downhill, thereby leaving the ridge top. My suspicions are that it is merely melting. Note the regularity of the bumpy arrangement of the cornice surface and the extra leading stripes leaving the cornice. Picture (4-6-1-27) was taken near the top and shows the extent of Mud Lake in the valley below. One can see the double channel leading into Utah Lake and the many bays and creeks entering the lake. Several islands are present. This lake is one of the greatest bird homes and resting and feeding grounds for the thousands of water birds. It takes on a new appearance from what I am used to seeing while tramping around its shores. The Canyon is State Canyon with Mopilton Mt on the right hand side. Picture no.

9-6-1-27



10-6-1-27

(5-6-1-27) shows a typical glacier canyon that runs down the east face of the ridge. A lake is found below. Picture (6-6-1-27) shows the peak east of Provo Peak. This country to the east looks interesting and rugged. Picture (7-6-1-27) was taken from Top of Provo Peak and shows the Cascade mountain and Timpanogos mountain to the north. The ridges on the east side of these mountains all go down about the same way. I am very sorry that this picture did not turn out so good. The rest of the pictures were taken on the following day. The falls is a good one where we camp below it. Picture (8-6-1-27) was taken the following day and shows Provo Peak and its cirque. Was taken near Windy Pass looking directly south. We slid down on snow the entire length of the cirque. We camp at the bottom of this cirque. Picture no. (9-6-1-27) shows a view taken in conifer group on the lowest divide of Windy Pass. The quarled pine tree suffers from the winds that whip up over the divide. Mt. Timpanogos in the distance. Picture (10-6-1-27) shows the upper most cirque in Rack Canyon taken from near Windy Pass. We had just left the head of this cirque. From Windy Pass we dropped down into S. Fork.



6-3-27.

Picture taken sometime during the early part of spring but am including it under this date. It was taken at the South-east part of Provo Bay or Mud Lake. The avocets, curlew, killdeer nest on the shore-line bordering the lake. where the ^{old} rushes and debris is deposited upon the land by the waves. The soils here are slightly alkaline with salt grass growing. There seems to be one alkali ore present. Examined

1-6-3-27

area where the salt grasses and several old indian remains just south of here where metals, monas and roofing clay was found.

6-4-27

made trip to Yellowstone Natl Park at about this approximate date. made entrance from the west gate, made complete regular circuit of the park and then left via the south entrance along the grand teton mountains etc. Recorded a few pictures along the way. The first picture (6-4-27) was taken at

1-6-4-27

Old Faithful just south of the lodge and shows some of the geysers found there. Spent considerable time on the geyser grounds as well as swimming in the warm swimming pool. The bear feeding grounds provide an opportunity to see the grizzly and black bears. The grizzly certainly had command over the black bears. It was a habit for these bear to arrive at early dawn at camp and make their regular inspection of the garbage cans by sitting down and pulling off the lid and then pawing out the cans and paper. It was certainly not a very sanitary thing for these bears. At evening they would come around camp and create quite

2-6-4-27

a commotion. The holdup bear was on duty and we fed him candy and prunes. The main attraction so far was to see a deer

in late evening standing in the waters at the edge of a timber bank along the Madison river. Picture 3-6-4-27 is a picture taken at Yellowstone lake at the fishing bridge Campgrounds. It shows the gull standing by the beautiful waters of the Yellowstone lake and the surrounding country. The feature that probably made it a winner in the Denver post ratogrove section was the fact that the people in the distance were enjoying those primitive things in nature the the National Park office. It was taken near the point where the Yellowstone river leaves the lake and showing the country to the east. Picture no 2-6-4-27 is, in my mind, one of the most interesting sights along the entire trip. It is the Kepler Falls just east of Old-faithful. While it is more on the order of a oversize rapid it is still on such a scale to be called a falls. The name doesn't make any difference to me nor the fact that it is commonplace being so near the Hotel yet to me it is certainly a grand site to behold. Picture 4-6-4-27 is of the falls. I suppose this falls has been photographed a thousand times or more. Made trip down the stairs to bank of falls. The most enchanting place to view this falls is from Inspiration point. The colors are interesting but do not compare with the colors of Bryce or Grand Canyon. Of course the colors of Grand Canyon are not as brilliant and variable as those of Grand Canyon of Yellowstone. Observed the Osprey nest in the canyon which so many people call an eagle. Picture 5-6-4-27 shows the river to an advantage. The deep greenish-blue color of the river is very impressive and the way it charges down the narrow canyon



(picture only) 3-6-4-27



4-6-4-27



5-6-4-27



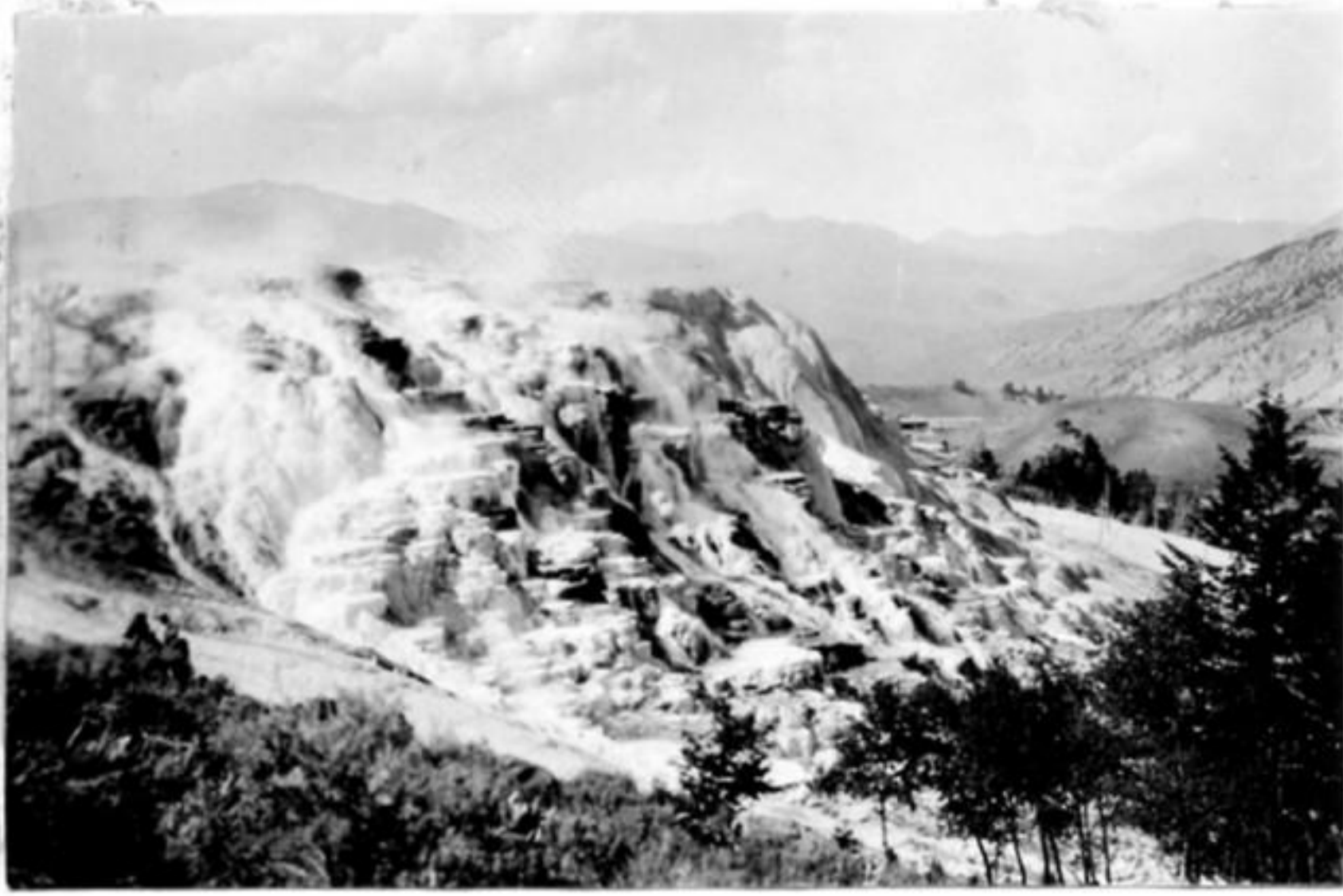
6-6-4-27











1-6-5-27



2-6-5-27

(picture only)

walls. Picture (6-6-4-27) shows the higher country somewhere in the park. Picture (1-6-5-27) shows the terraced hot springs at Mammoth. This is ^{by} far of the most beautiful hot spring formation in the entire park. At least of the ones that I observed. The intensity of the water color and the dainty pools of water make this, indeed, a most wonderful site. Picture (2-6-5-27) is of a brown bear in a conifer at Old-

faithful. These bear certainly enjoy climbing trees. The complete itinerary of the park includes the following: west Yellowstone entrance, Madison river, Madison junction, Cascades of the firehole river, along the firehole river, thru the lower geyser basin, to Old faithful. At this area we saw the Geantess, Gratto, gem pool, punch bowl springs etc, from Old faithful, Kepler Cascades Craig pass, duck lake, Thumb, fishing cone, Lake Camp, fishing budge camp. (caught nice fish here), Dragon mouth springs, Canyon & lower falls, Sunrover pass, Tower falls, Mammoth, and its sp., Bunsen peak, Swan lake, Apollinaris springs, Beaver lake, Twin lakes, frying pan sp. Norris Basin geysers, Beryl springs, Gibbon falls, back to Madison junction, hence again to Old faithful to Thumb, hence south past Lewis lake down the Lewis river to the south entrance, hence pass the tetons, hence to Utah again.

~~6-6-24-27~~

Two pictures of Strawberry valley and reservoir from divide of Diamond Fork. Taken about this date, Picture (1-6-24-27) general to east with



1-6-24-27

2-6-24-27

the aspen trees in foreground. no (2-6-24-27) showing the old road and more of the lake outline. This area seems to be principally aspen trees.







8-16-27

270816-9

made trip to Maple Flat, east of Provo Utah and took along a friend and neighbor Weston White. Took four pictures while on this trip. Picture (1-8-16-27) was taken from the point of Mother Irons Nose at the south end of Maple Flat proper. From this point one can see the distant Provo Bay or mud Lake. The extent of this lake is clearly pictured here with the many bays and creeks entering from all sides. The channel connecting the two lakes is wide. During this part of the summer the lake is not as high or large as in the early spring when the flood waters and drainage of snow water from the fields help to raise the water level. There are 20 small ponds in the first Ward pasture that I have been to and skated on in the winter that can be seen from here. In Utah Lake one can just faintly see rock island. no. (2-8-16-27) is a general view of the city showing the State mental grounds at the end of East Center Street. I'm surprised that the rocks that are dislodged from the cliffs do not roll down upon these buildings. Picture no. (3-8-16-27) is a view of Maple Flat looking toward the north. The top of ~~maple~~ the I mountain is shown in the background, with the Cascade range in the distant background. The soft appearance of the maples, oaks and aspen, lends an added attraction to the picture. This flat in the fall is a most gorgeous site with the maples & aspen leaves in full autumn color. Picture (4-8-16-27) shows Weston and his dog Spot. It gives one an idea of what to expect when one peers over the south end of Maple Flat at the point. The abrupt jump off is evident. The trail at the bottom of the Canyon (State Canyon) is observed in the picture. One experiences some very unusual experiences with wind currents here. Sometimes there is absolutely no wind while other times the wind carried paper for into the sky.

(NO RECORD)

To Dr. S. Eldon Beck, B.Y.U.
Provo, Utah.

1-8-16-27

2-8-16-27

3-8-16-27

4-8-16-27

8-16-27

Picture of Ray Culbertson taken on front lawn of our home.



5-8-16-27

8-29-27

Trip to top of Timpanogas mountain from the Aspen Grove Approach, thru Hidden Lake valley, up past the emerald lake, up glacier to top. From near the glass house on top recorded picture (1-8-29-27) showing trail and distant Cascade mt. Picture (2-8-29-27) shows American Fork Canyon cirque also taken from the top of the mountain looking straight north. The cirque below shows the old terminal moraines. a few patches of



snow remain at this date. Do not know when these pictures were taken but occurred sometime during the summer months of this year. The trail can be

2-8-29-27

1-8-29-27

seen below across the American Fork Cirque. Granite mts in distance.

9-1-27

made a trip to the Parks in southern Utah with family which included Bryce, Zion, Cedar Breaks and Kiabab and Grand Canyon. I recall my first visit to these parks in 1923 and as I look back can say without a moment's hesitation that the trip on the Kiabab Forest and the grand Canyon was the most deep seated and most inspirational thing that occurred in my life. I recall on that trip of my wondering in the forest fringes, as I was too unat ease in the deeper forests, how I walk across the broad savannah meadows and found evidence of a considerable amount of that of indians arrow points and how I speculated as to how the country looked at that time, of the association of early morning and late evening with the main activity of the wild life particularly the deer, of the old well N.E. of the V.T. Ranch, and of the evening views at point Sublime and the numerous deer along the road leading to Point Sublime. That was many years ago however. On this trip of 1927 I found the country



1-9-1-27





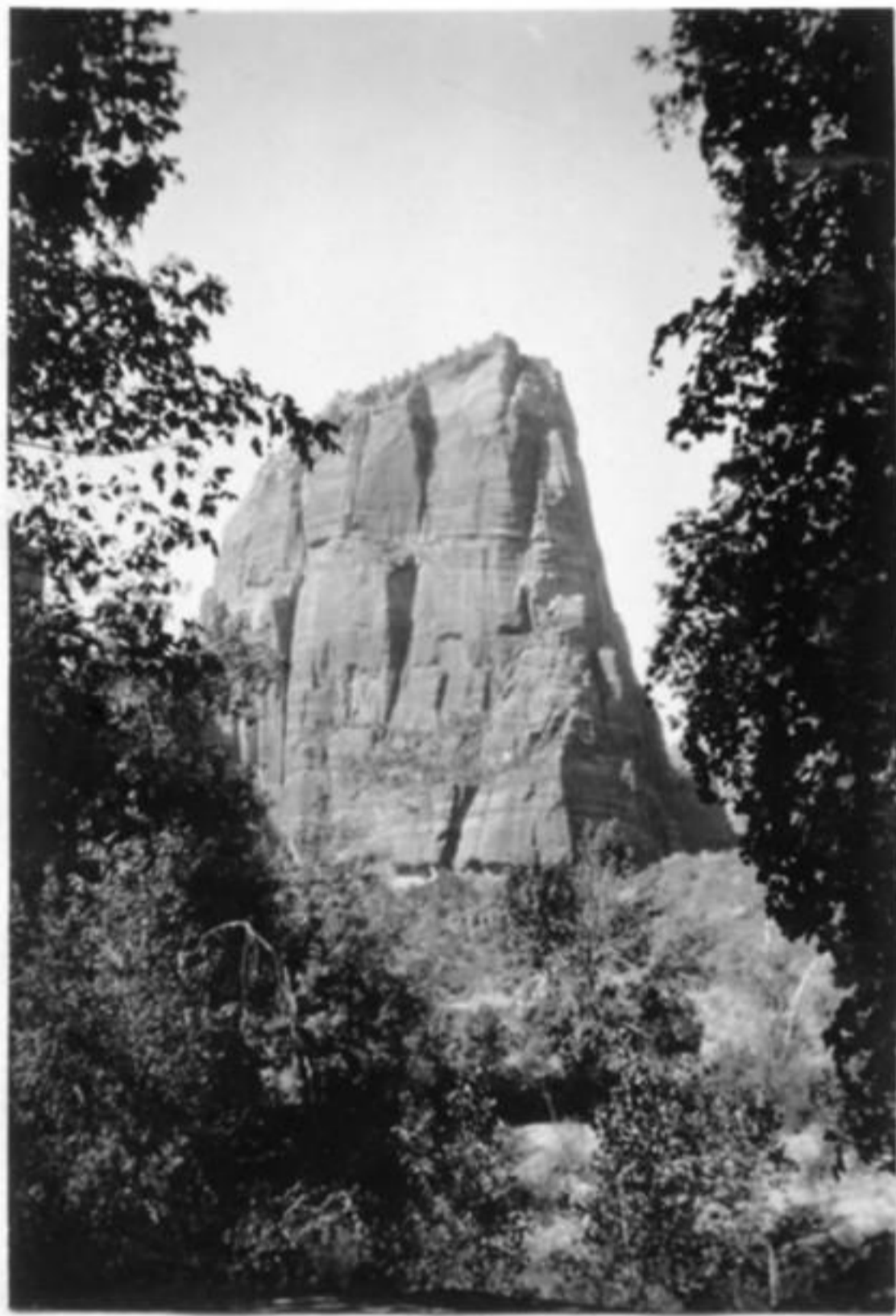




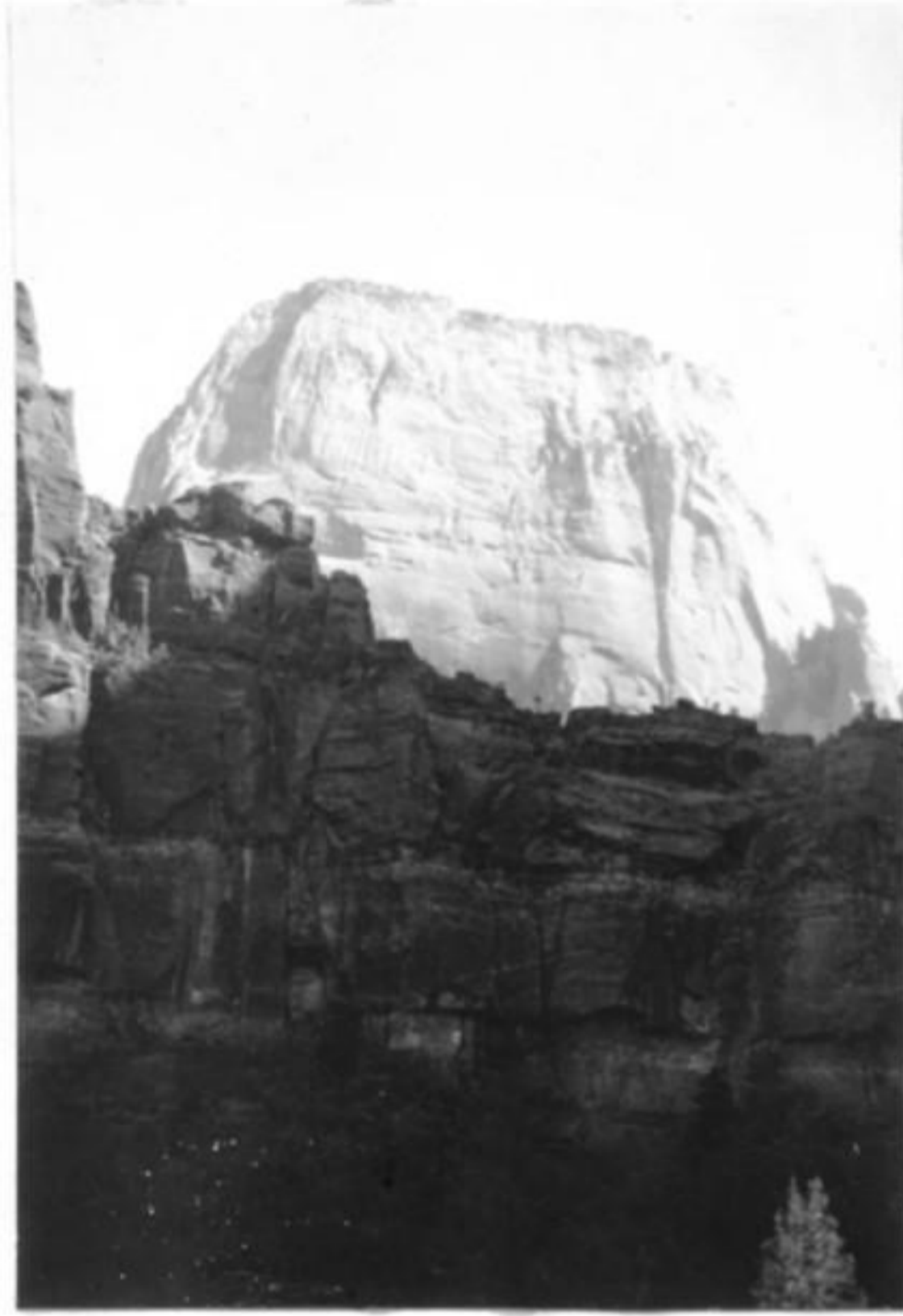
2-9-1-27



3-9-1-27



1-9-3-27

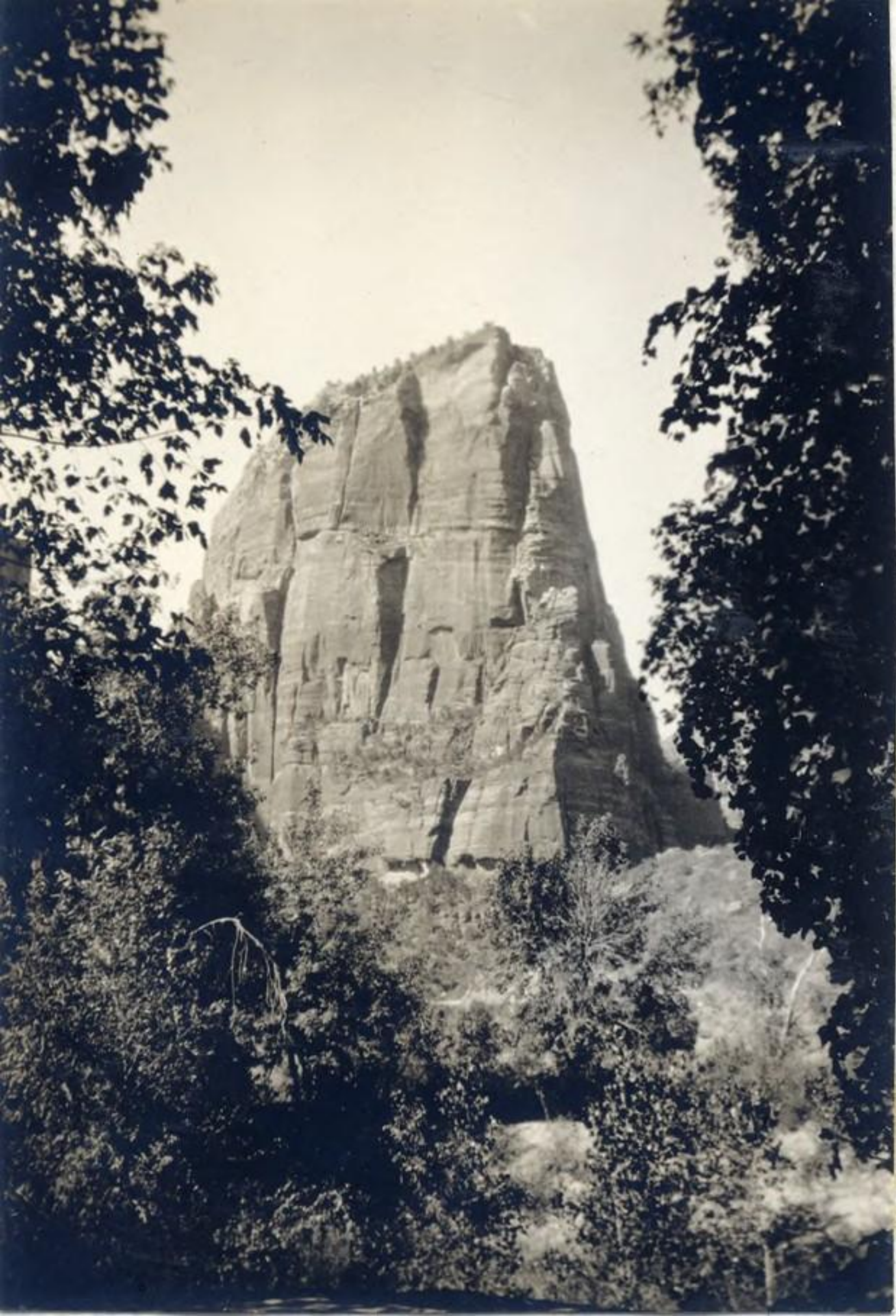


2-9-3-27



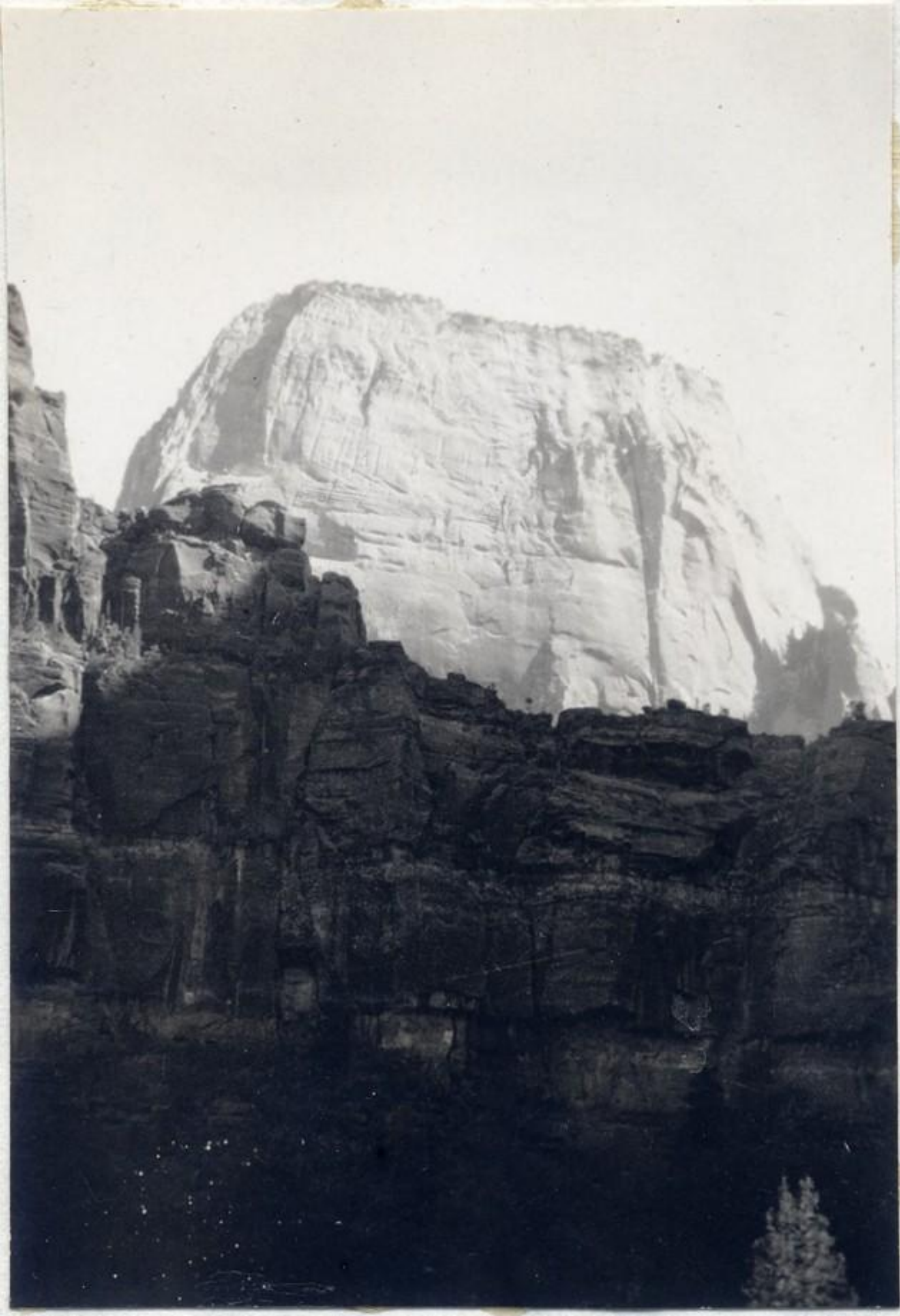
1-9-5-27

to have changed a little, but nevertheless interesting. At Bryce we stopped for a day or so and hike all next day in the deep canyons where there were no trails to be found. In this hike I took a couple or so pictures showing the formations. Picture no. (1-9-1-27) is of a balanced rock. It isn't in any danger of falling over yet however. Picture no. (2-9-1-27) is a natural bridge in a series of formations. The base of these cliffs is a beautiful yellow clay. No. (3-9-1-27) shows a partial natural bridge with a continuation of the country beyond. From Bryce we visited Cedar breaks and Zions. At Zions we hiked the narrows. At this park took two of the most commonly taken pictures of the Park. no. (1-9-3-27) shows Bright Angel point. no. (2-9-3-27) shows the Great White throne. At the Kaibab Forest took picture (1-9-5-27) of the lone deer in timber near V.T. Ranch. The deer fed back into the deeper forest with the shortening of the morning shadows, and when one goes into the fringes of the forest he finds the deer bedded down or quietly feeding among the aspens and conifers. This deer is seen in the center of the picture.





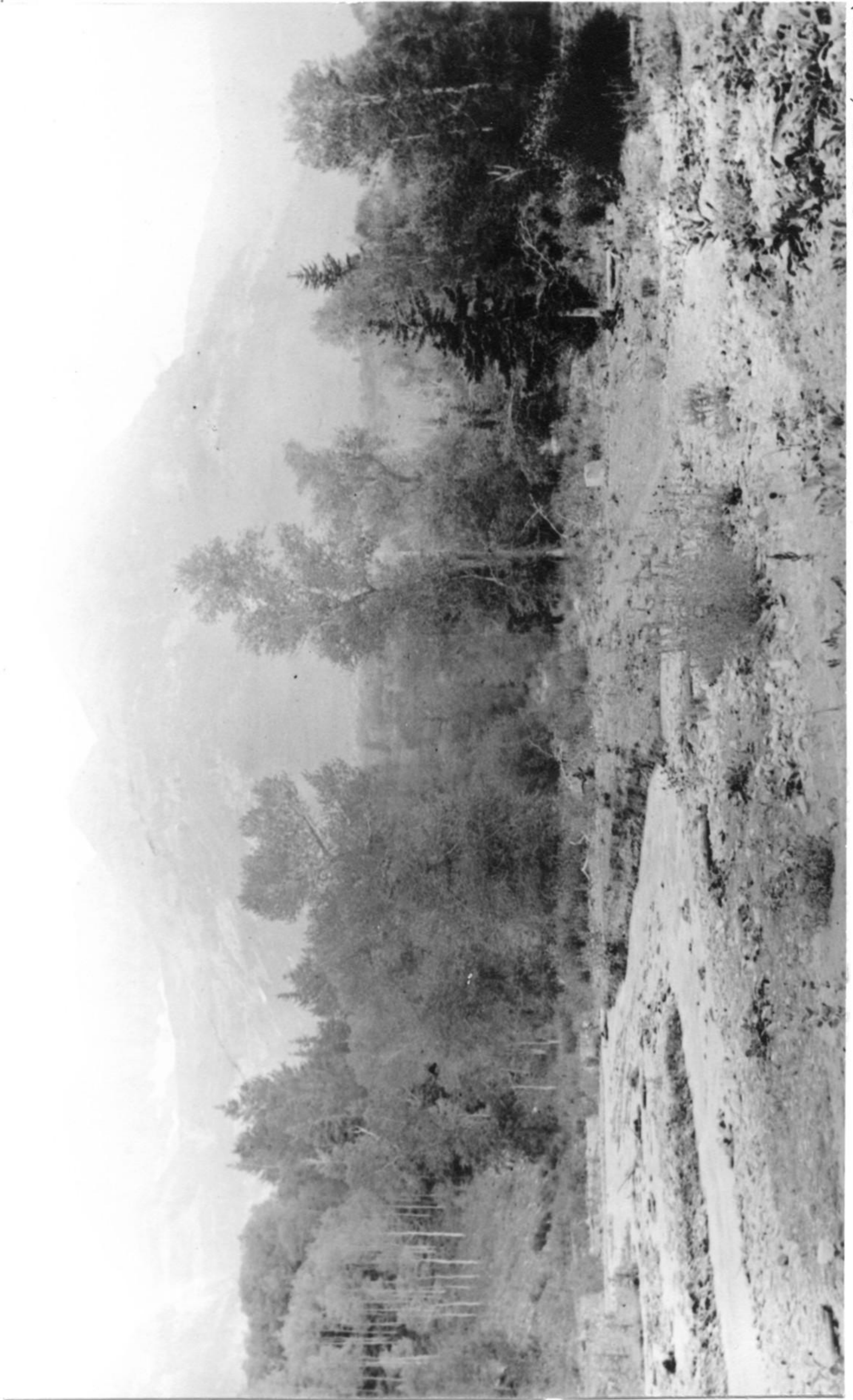






ADDENDA

1927



1-9-26-27 (ENTERED)
PHOTO BY ROBERT G. BEE
SEPT 25, 1925
STEWARTS FLAT, MT. TIMP.
UTAH CO., UTAH.

