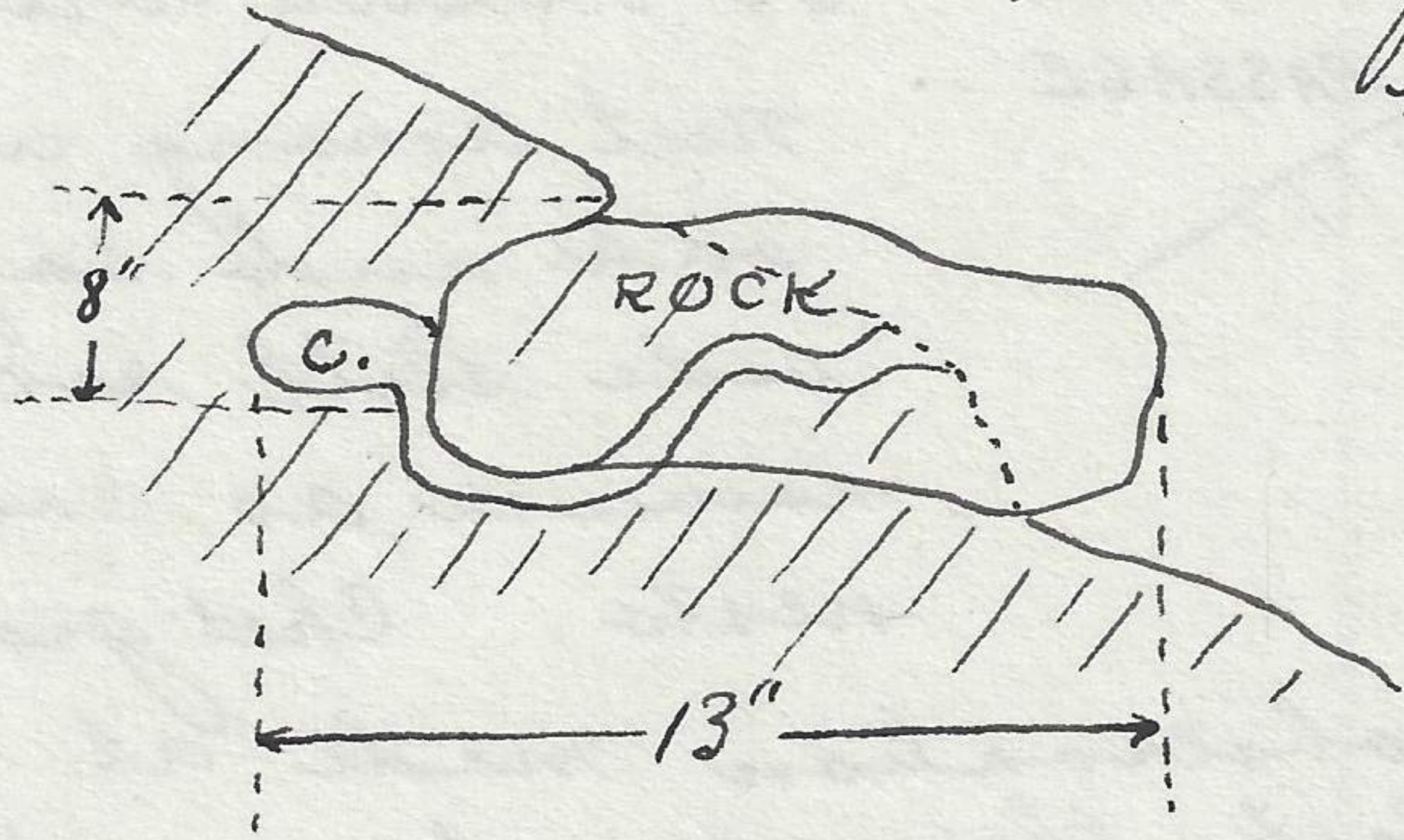
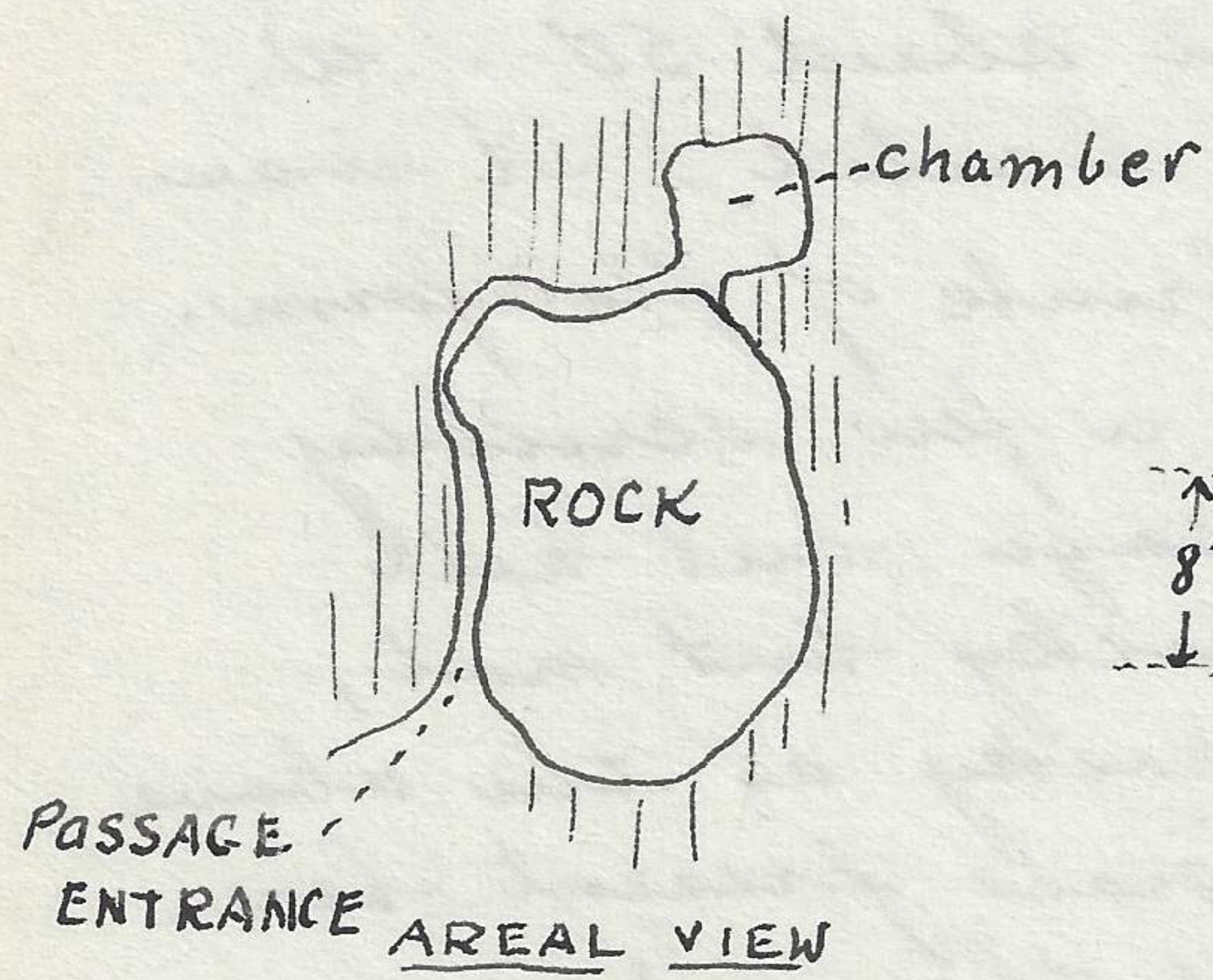
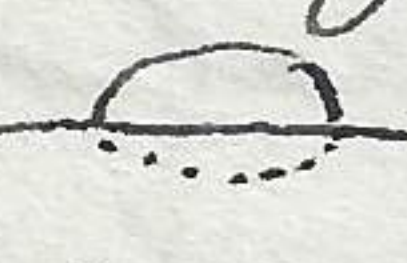



probably a male was collected here. It was in chamber. Here the oak, maple are near with Artemisia the dominant bush. The sun shadow was now leaving the hillside where the colony was located. ^{Examined 10 minutes after sun had left hillside at colony.} Nest no 3 was found to be very similar in outline and structure to no 1. again. It varied however in the entrance location. The entrance is to the side of the rock and has an outlet near the top of the side of the rock. The nest chamber measured 1 1/2 inches high, 3 inches deep and 9/16 inches wide. The nest was constructed for the purpose of incubation of eggs, it appears.



From the top of the surface soil to the bottom of the chamber is 8 inches. When dislodged found a ♀ at the nest chamber. She was charely associated with her eggs. Located at 6:15 P.M. The four eggs were grouped together, however one egg ^{placement} indicated that possible their was no other attention given to the clutch of eggs except to guard them. This one egg was about 1/2 inch from the others and was partially  imbedded in the dirt. If she intended to cover these eggs she could attend 3 and at least touch the fourth one. This all suggests that the eggs are deposited and not actually cared for except to remain near them, although it is more probable that she actually incubates them!! If her purpose is to guard them then her actions certainly indicate that she is a very faithful guardian because she showed all intentions of returning to her eggs as soon as she was taken from the nest. The four blotchy dirty white eggs measured on the average approximately 15 mm x 9 m.m. x 10. m.m. and were not as symmetrical as an ordinary bird egg. Its appears would be something on this order,  being flattened on the bottom side and convex on top. A male ^(?) was dislodged 10 feet away from the above nest no 3. Called this site no. 4. It was very similar in structure and outline as nest no. 1. We located nest no 5. just as the sun was leaving the top of the large bold knoll on south side of the canyon at 6:47 P.M. This large knoll is a very prominent one. When the large