

portion of picture. Salt Lake Valley and the point of the mountain
in distance. Rock Canyon Cirque and burnt hollow below.



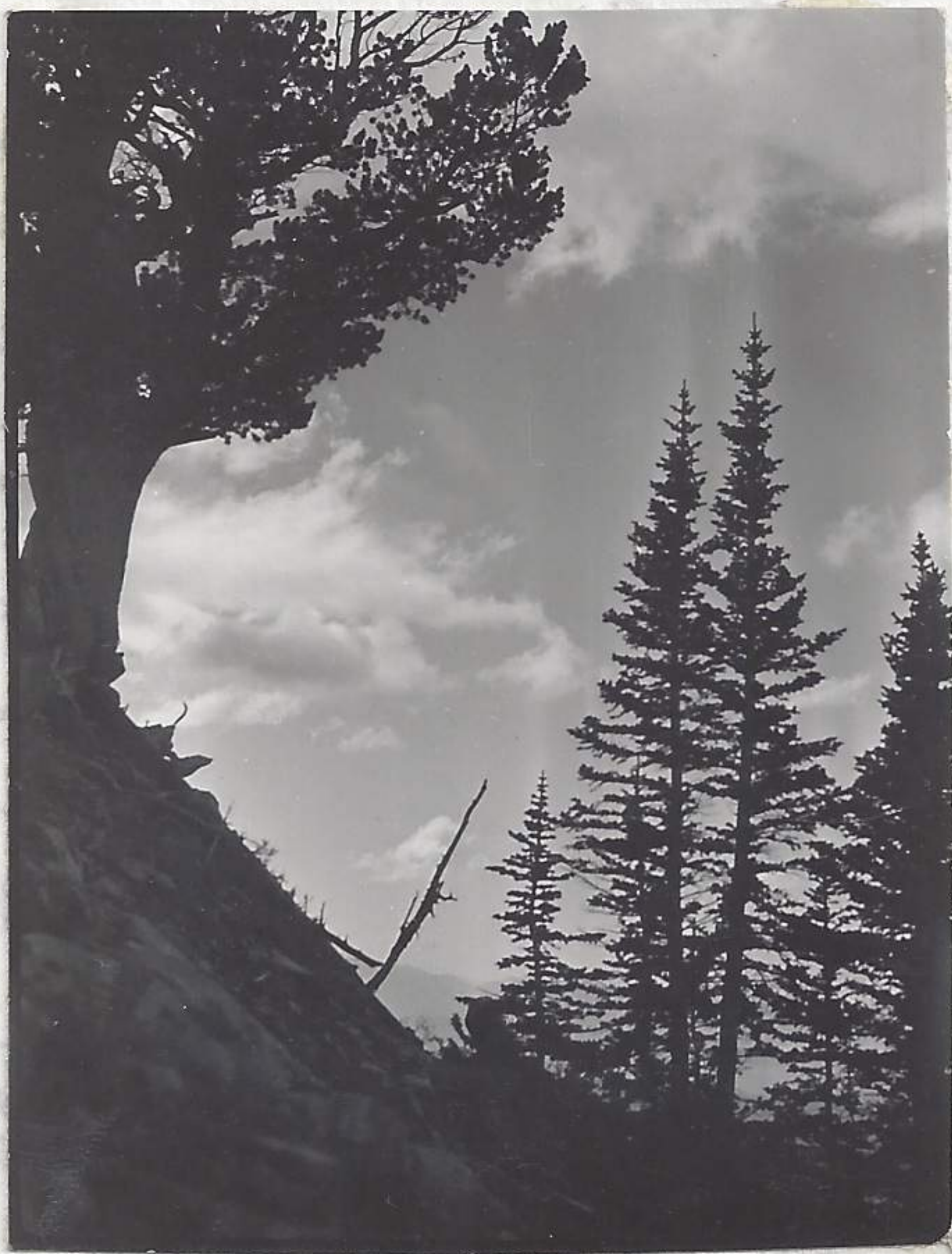
1-9-13-39



2-9-13-39



3-9-13-39



4-9-13-39



5-9-13-39
(see p. 231.1)

Picture 3-9-13-39 of slough runner and points to the north, showing
the north fork of American Fork. These clouds passed over
until about 4.00 clock. (this type of cloud.) after which they
disappeared. These clouds permitted one to see the Uintahs.
Timpanogas was never free from mist and clouds at its upper
limit. Picture 4-9-13-39 shooting directly to the west with
fire and lone cloud as subjects. Peculiar polarized light
effect projecting above tops of conifers on right of picture.
Picture 5-9-13-39 just a pictorial shot of a dead *pinus flexilis*
upon a cloud. Granite range and Am. Fork Cay to north. All these