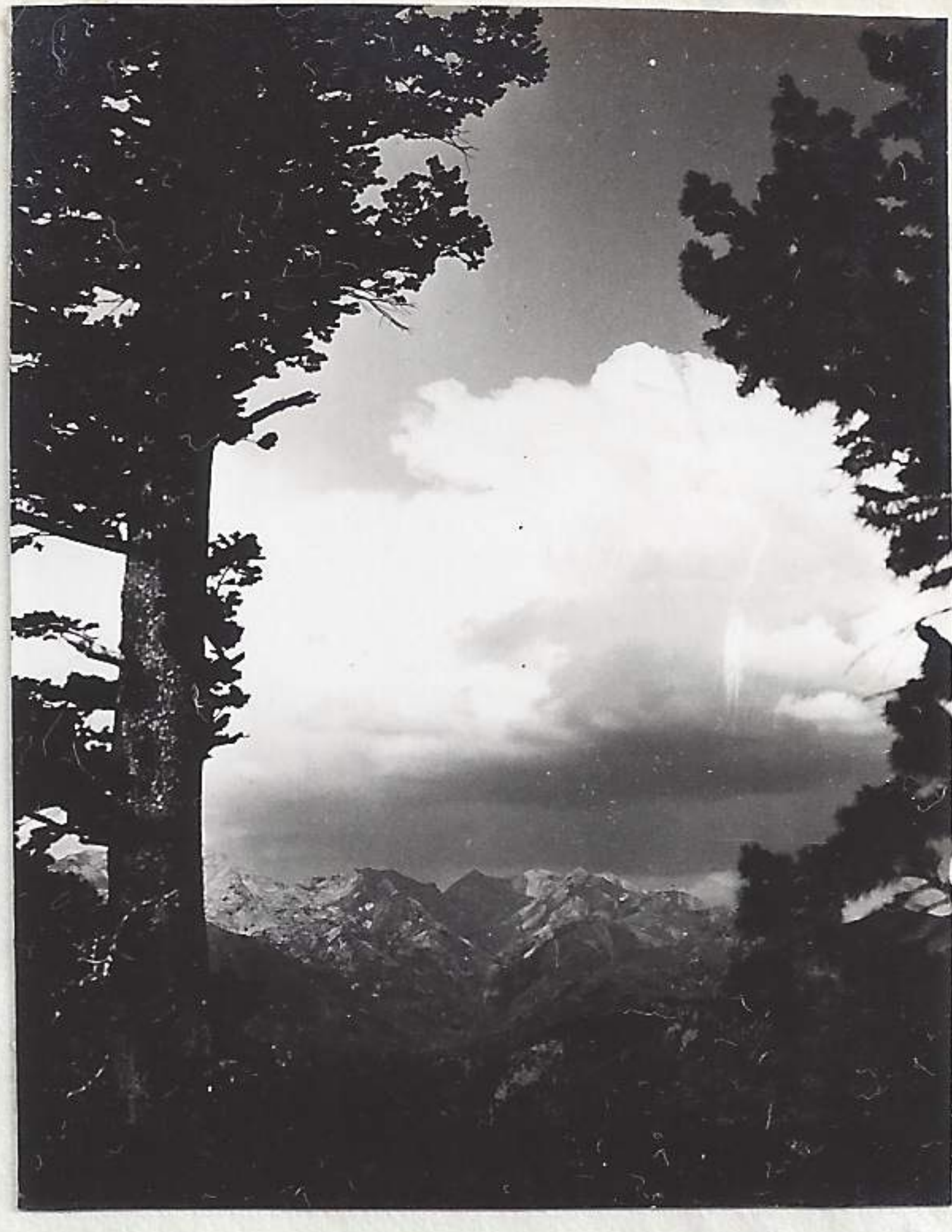


390921-257

Picture 44-9-21-39 was taken on edge of brink showing  
scout tree on the left and the dis-  
tant granite range to the north.



44-9-21-39

Preparation and measurements of  
mammals from research area no  
A-9-20-39 of this mornings catch:

(7-9-21-39) *Phenacomys* 151-33-18.1-♀. 18 gr.  
uterus ok. 19 fecal pellets in enlarged  
rectum.

(23-9-21-39) *Clethrionomys* 140-42-18.4-♀ 22 gr  
uterus ok.

(15-9-21-39) *Clethrionomys* 124-38-18.2-17 gr.  
♂ testis 4 m.m.

(33-9-21-39) *Clethrionomys* 120-35-17.5-15 gr.  
♂ testis 2.8 m.m.

Sun sinking below west ridge at  
3:52 P.M.

Picture 45-9-21-39 showing face of west cliffs with the fore-  
ground showing the effects of the high lining of sheep upon  
the maple and shrubs in crevices. Toward evening made  
inspection of research area A-9-20-39  
at 4:25 P.M. Area in shadow of west  
ridge. Indicating only those  
traps effected or held mammals  
because of the relatively non-inter-  
ference of the line. See original  
trap description for trap sequence.



45-9-21-39

- 64. sprung Traps 51-100
- 28 J. sprung 50 J. - 1 J.
- 23 J. sprung 1 B - 50 J.
- 21 J. sprung
- 14 J. sprung
- 2 B. sprung
- 3 B. sprung
- 23 B. sprung.
- 39 B. Bait gone, sprung
- 41 B. sprung
- 46 B. Cut. on cones. (43) just caught.

Thru. at 5:00 P.M.

Established new research area A-9-21-39 this evening in area  
A-9-21-39. Superimposed upon sample area a regular route.  
Traps placed every 20' and in the main at base of ledges.