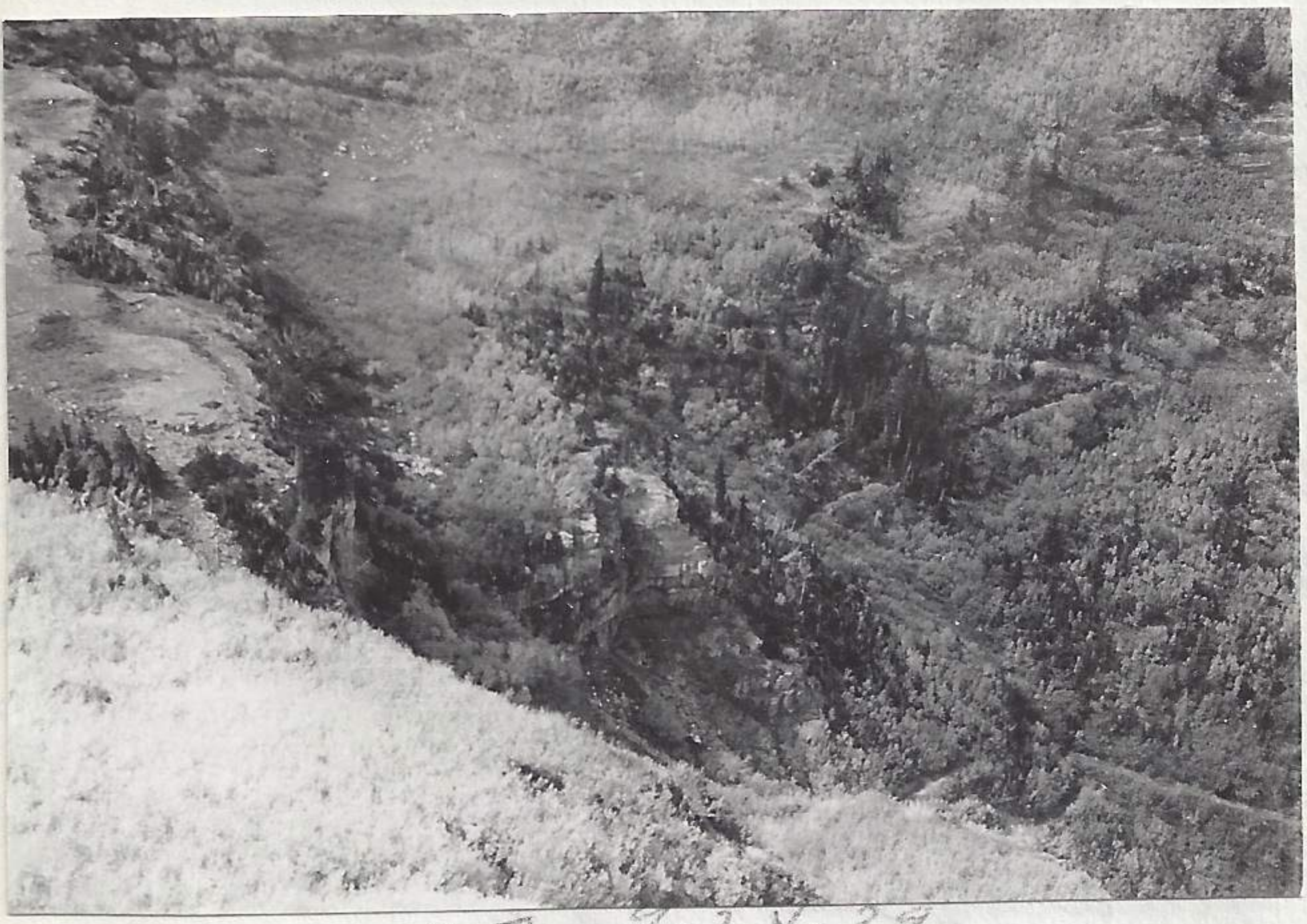


390924-273

grove turning red. Maples on Scout. Camp ridge faded. Cottonwoods at Stewart flat green & yellow. Chokecherry at Home in Provo just beginning to turn yellow with about 5% effected. The Kunzechink at home about 80° yellow and reddish. While at Timpanogas Basin took a picture of the inter-moranic bog near station 4 where I had trapped during earlier stay. The conifers and bog itself did not show up in picture but the aspen trees help to lend an artistic border to the shot. This one rated no. 28-9-24-39 and will call it, for lack of a better name "slender aspens". Thus concludes an enjoyable and somewhat profitable stay on Mt. Timpanogas.



28-9-24-39



27-9-24-39
27-9-24-39



43-9-21-39