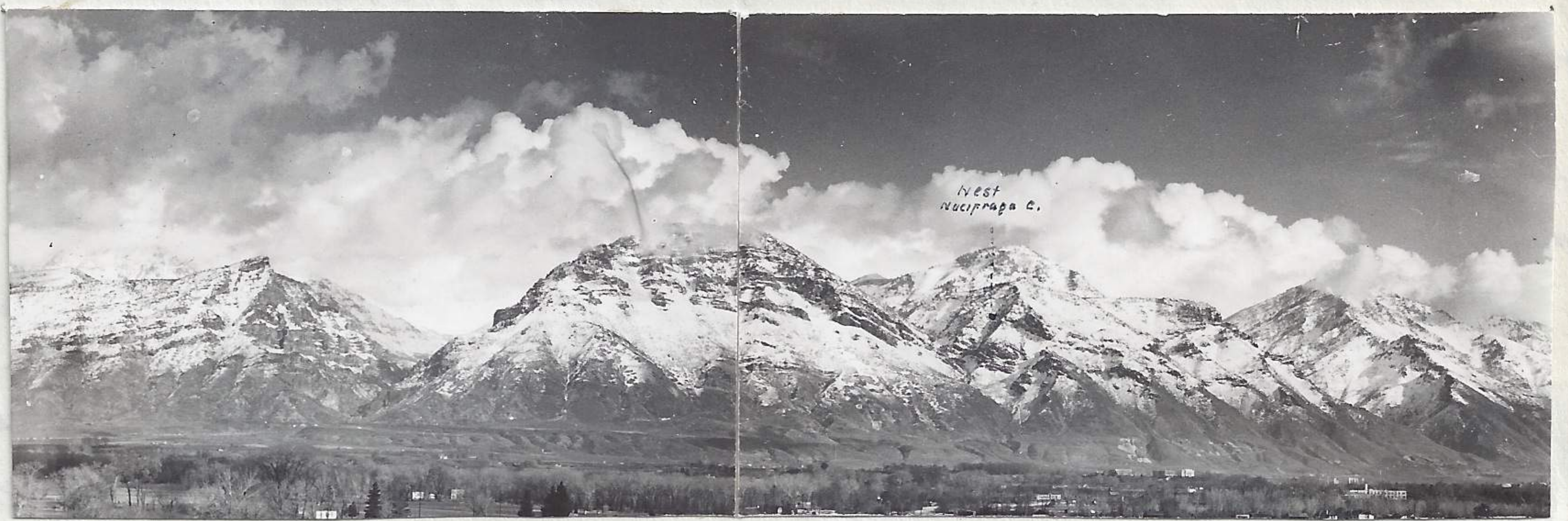


2 Coats, 8 gulls, song sparrow, marsh <sup>400128-3</sup> → hawk, spire. → . Others present but could not bring close enough to glasses. When the marsh hawk flew across opening and lit on mat of rushes, there was no signs of anxiety among the ducks. Found the Golden eyes to dive by merely rolling over forward without exertion. The Buffle head were more jerky and forced their dives while the Coats literally jumped into the air and then dropped straight down. Recorded the periods of time in which the different species of duck remained submerged while feeding. The Bufflehead dives more rapidly and more energetically and in more rapid succession. Their period of submergence is: 12-16-16-17-17-15-11-8-11-14-13-13-15 seconds.

The Golden eyes were cloaked at 16-15-19-16-19-22-25-18-19-23-13-18-21-15 seconds for the ♀ and 19-20-15 seconds for the ♂. Sometimes the ♀ upon emerging from its dive come to surface with neck held low and partly held in water as if expecting an intruder. The ♀'s seem to dominate the males and frequently drive them off. Drove out to end of river on frozen surface but on return found the substratum soft with the result that a team of horses was employed to pull car back to main road.

2-4-40

Mary & I drove out to second dugway to get some oranges from road peddler. On return took a panoramic of mts, east of Provo from delta looking across Provo River bottoms. Their numbers are 1-2-4-40 and 2-4-40.



1-2-4-40

2-2-4-40

Find that there is an excellent strategical focus on the east side of delta where one could easily record the entire sequence without much difficulty. This area, and where panoramic was taken is located out 3 blocks