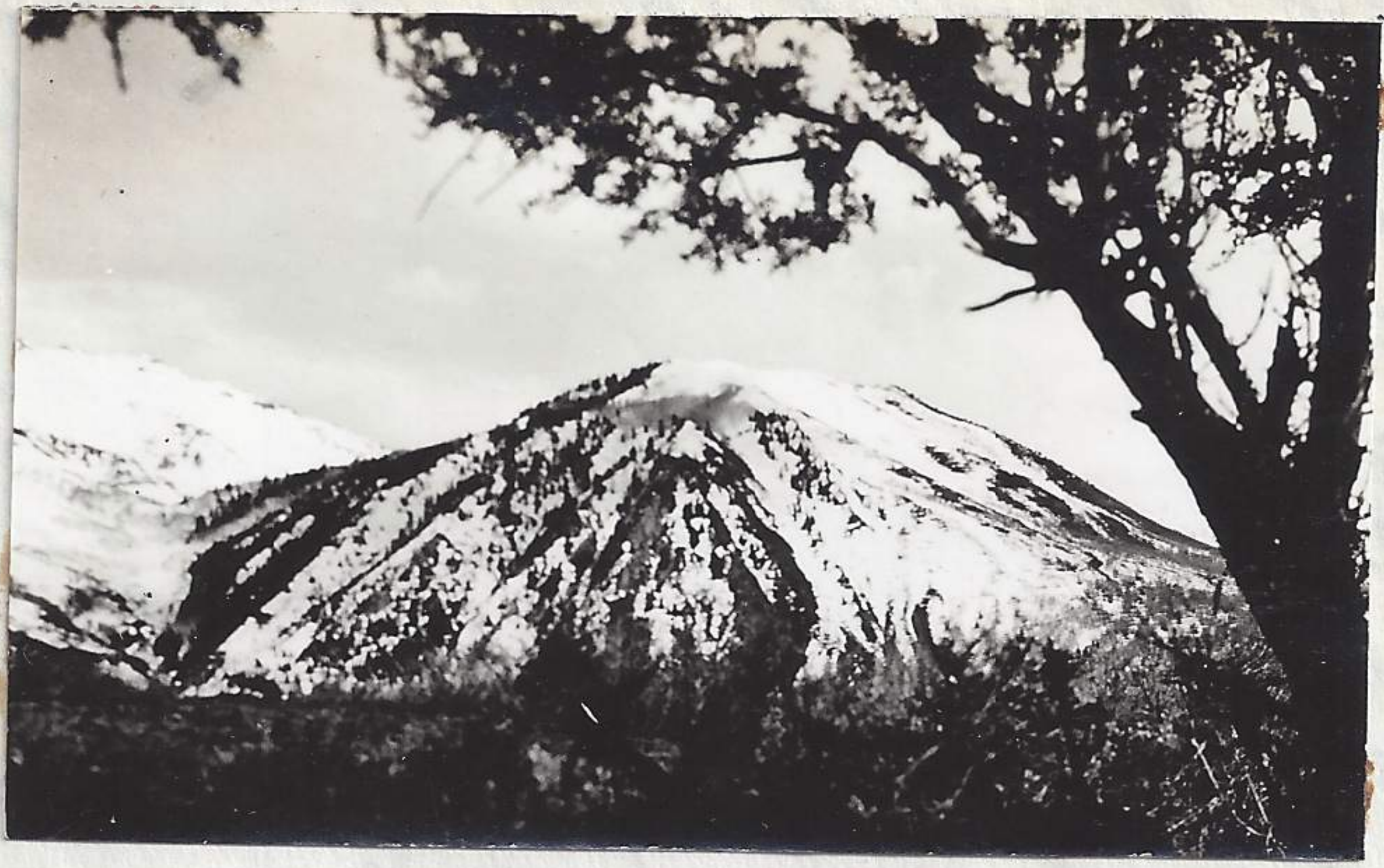


reservoir → 400414-48 ^{took two} pictures with the *Cercocarpus montana* as
a frame. Picture (2-4-14-40) showing the upper slopes of



2-4-14-40



3-4-14-40

Timpanogos showing the extent of snow at this time of year. Picture (3-4-14-40) shows Big Baldy to the S. E. indicating the abruptly dipping beds to the east. While the foreground blocks the lower views of this mountain, noticed that the foreground level is about the lower edge of the present snow line.

Stayed here at the reservoir until 3:20 P.M., during which time I inspected the Battlecreek head drainage with the binoculars. Did not see anything moving except an owl & a spurred Towhee close at hand. From reservoir went north to high point and inspected lower eagle nest. Brown conifer needles in a partially matted condition. One green fir baw on nest structure but nest showed no signs of being built up or occupied. Snow on divide slopes to north. While inspecting this nest at 3:45 4 vulture flew up Grave, or rather road in descending and ascending circles coming back at one time to inspect me momentarily as I perched on upper ridge opposite nesting ledge. ^{also w. Huffed Swifts played here.} From this position one can easily look directly into nest. These four vulture kept close together in formation and as they flew over 2 deer below the deer did not react. This point above the eagle nest supports a beautiful grove of *Cercocarpus montana* which merges into the *Abies concolor* on north side. One deer near top in oaks & mahogany. From here continued up ridge to middle eagle nest and found no one home and nest least used of the three nests. The needles were matted & brown and were not adhering to the branches. The upper nest showed signs of being used last year with leaves or needles brown but still adhering to branches and not matted. Kept an eye on any eagle activity the entire day but did not see any signs of them. If an eagle had been