

3-7-41

Jack Colledge of Tehi informs me that the Whistling Swan have been passing thru Tehi for several weeks. One bird picked up on the 5th. The Sandhill Crane are also passing north at this same time.

3-9-41

Reed Beddolph and wife and myself spent the day at Alta for the sheer pleasure of skiing. Availed myself of the many ski lifts. made one trip into the upper ski basin and returned. During the course of the day took the following pictures. no. 3-3-9-41 of the upper limits of ski lift in Cirque Basin above Alta. One can



3-3-9-41

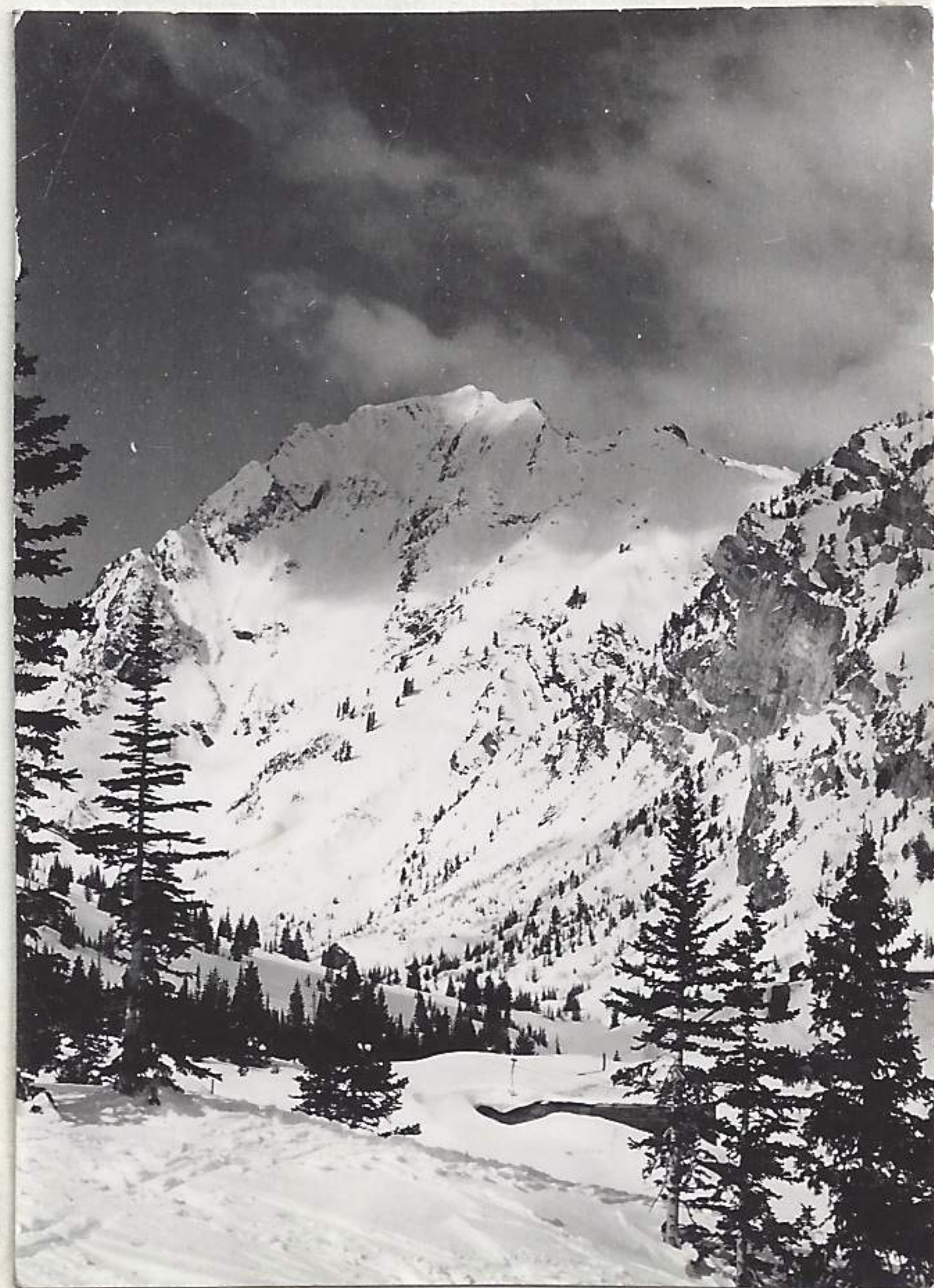


1-3-9-41
(see page 13.1 for enlargement)



4-3-9-41

see the snow shelter at the bank of the cirque. North side of Alta in shadow and sun. no. 2-3-9-41 showing pit to west of Alta and on north side of canyon. This mt slide continually at its upper slopes. will make an ideal mt of those who enjoy the more hazardous mt. climbing. The peak was recording in an interesting mood. no. 4-3-9-41 in some situation as no 3. The arrangement of light and dark ridge in successive order makes an interesting pictorial arrangement. no. 5-3-9-41 and 6-3-9-41 form a panoramic of Alta skiing area with lifts and slopes pictured. Upper basin visible.



2-3-9-41