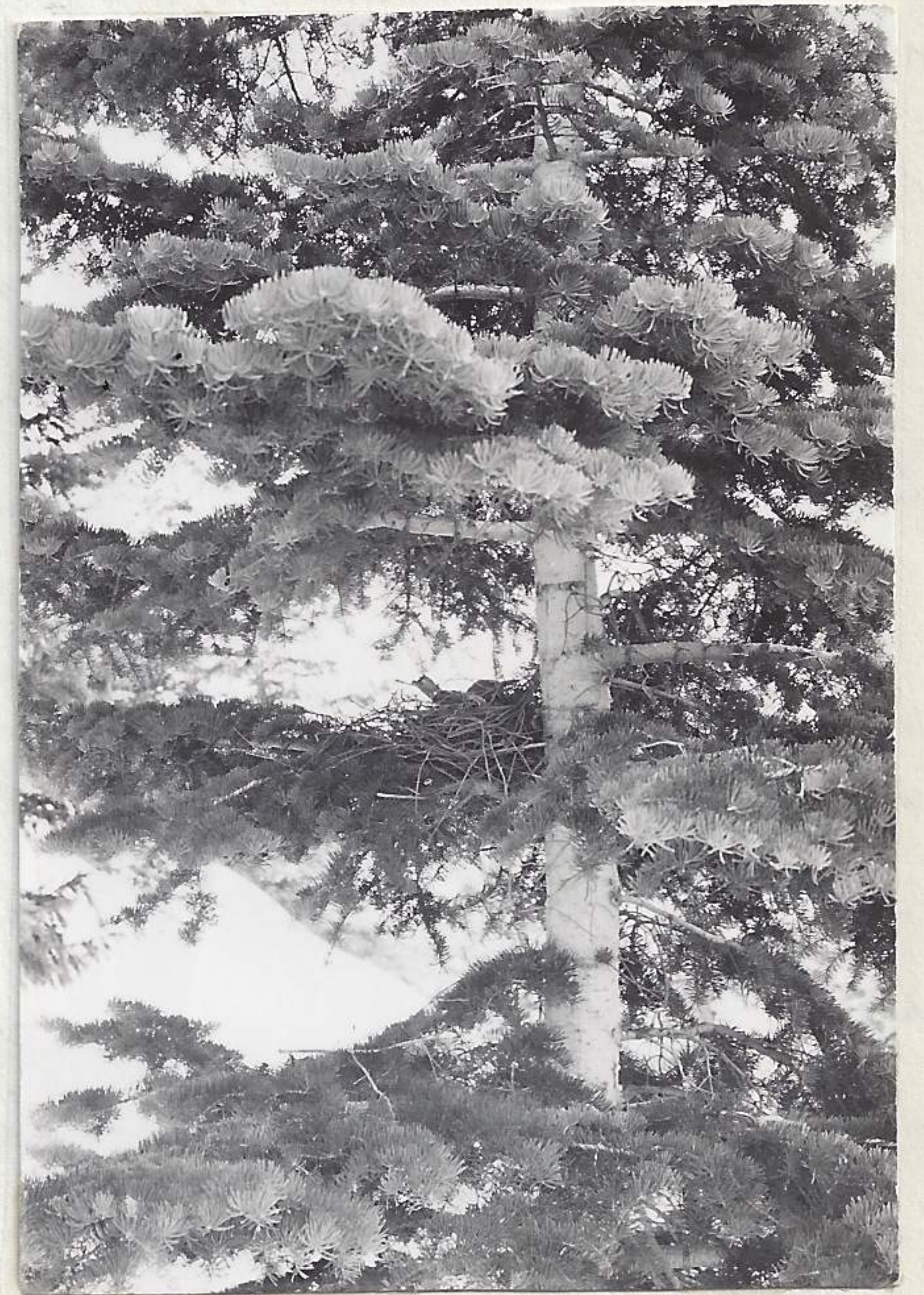


solitaire, & flicker, Utah jay on south <sup>side of canyon.</sup> 10331-34  
Covered quite completely the north exposure of Slide but fail to find any signs of crow aggressiveness which would indicate their territorial zones. Inspected nesting tree of Clark Crow of 3-20-41 but found no further signs of it being used. From the evidence presented one can judge for himself if it is not possible that the pair of these birds which deserted this nest, had not crossed the canyon and obeying to the urge of the nesting cycle, completed their home on the north exposure of the maple flat mountain. The remaining portion of the day was to be used to investigate this nest which was noted 3-24-41 to be under construction. Up until now it had not been disturbed by us. Crossed canyon and gained the nest site. The following

actions observed upon approach to this nest. No action or response of either bird on approach. Slowly moved upon the snow surface to within 10' of nest. It remained motionless and watched me as I tried to orient for a picture, the shot of which is recorded (1-3-31-41). After watching it for about 5 minutes I attempted to flush it with the least amount of disturbance of the eggs which I hoped were present. At about 5' or less it left and lit in the top of a dead conifer and remained perfectly docile and quiet for a few minutes



1-3-31-41

and then flew 30' further beyond. Realizing how easily it was to cause desertion of their home, made a rapid inspection and then withdrew and made rapid descent to slide canyon below. As I left it uttered a few calls but did not attempt to return to nest or follow me. Its complete lack of the aggressive attitude startled me and it caused me to wonder about the consistency of their actions. Are they noisy & aggressive around their territory, or are they not? Observed also that there was no mate near nest, at least it did not make its appearance. A *Eutamias dorsalis utahensis* some 400' below nest. A red tail circled on top of Y mt and an eagle soared south from Y mt. The nest was placed in *Abies concolor* about 7' high from surface of snow. Tree small but bordered by large conifers of *Abies concolor* and *Pseudotsuga latifolia*. Exposure completely covered with snow. Nest on south side of tree. Bird facing west. Nest visible