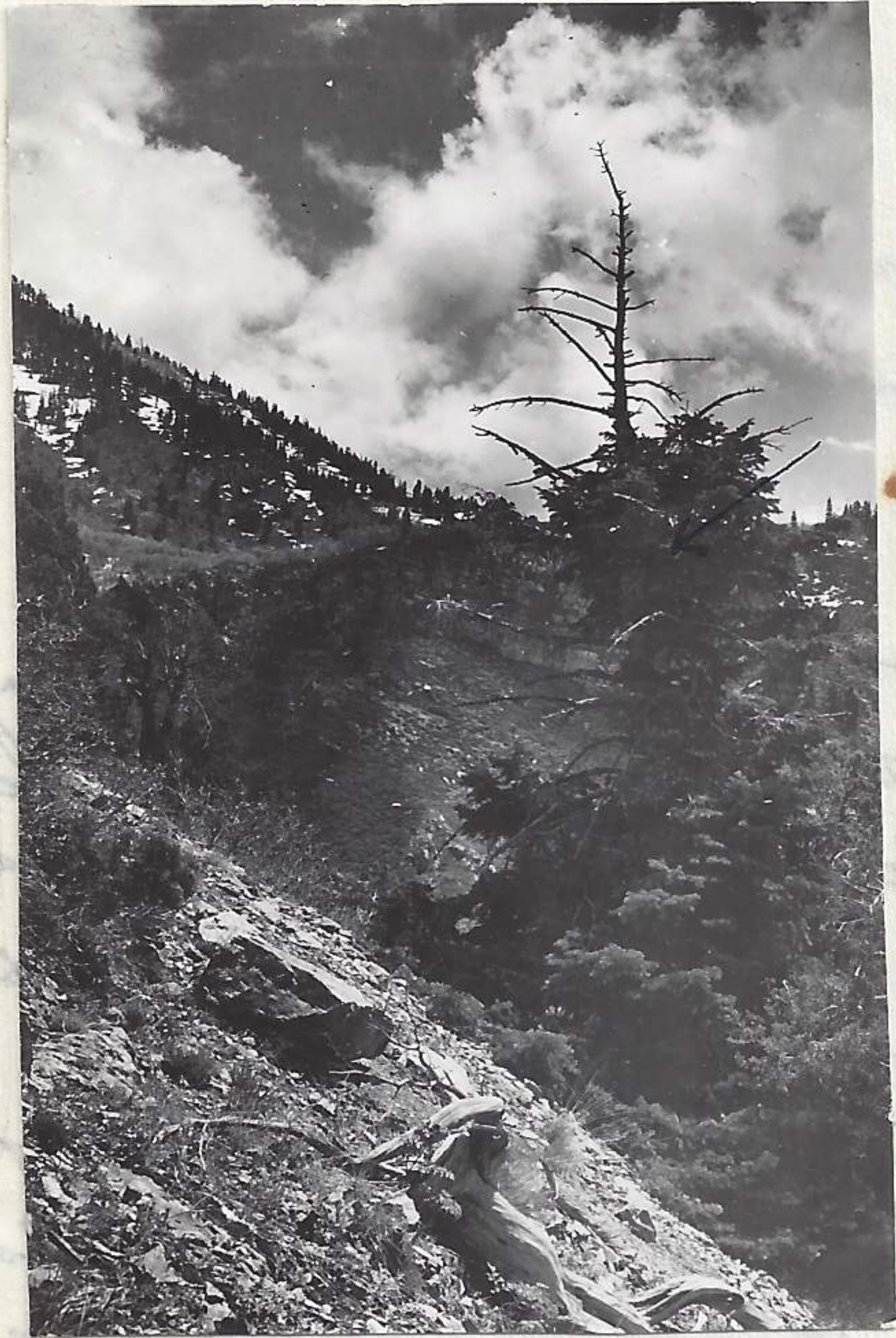


reaches were seeding. Utah jay and flicker calling in same area as heard in previous trips in floor of slide just east of the first two prominent knolls. Jay calling like cat with occasional rumbling call. Flicker summer dreary call. Paused to record the nest-



ing tree of the Clark Chow. (see previous notes relative to this nest. Tree approx 22' high with nest in upper mass of branches and placed on west exposure. Tree - *Abies concolor*. At 12:45 an Eagle flew north across slide canyon. Numerous Swift flying by. Warbler calling. Utah jay remained in one area as I passed by. Warbler nervous and remaining in territorial limits. *Sceloporus* on ridge dusky grouse tracks in evidence Junco concepts flew from base of

1-5-15-41

mohogany. It remained nearby. Cowbird left from among mohogany and juniper growth at close approach. Appeared much concerned. Flew 50' to wait until flushed again at which time it flew back toward point of initial position. Dusky flew from base of mohogany. Old Utah Jay nest, <sup>1-5-15-41</sup> in mohogany - nest 6' high <sup>(from ground)</sup>. 2 Juncos and 2 L.S. Towhee and 1 Green-tail Towhee feeding within 8' of each other without concern.

This situation is frequently observed. 2 deer tracks numbers as one ascends. They apparently use west exposure for bedding. Chipping Sparrow calling. Arrived at Top of Y mountain proper at 2:00 P.M. Inspected top for about an hour and then gained north bank to inspect the eagle nest. At this point took picture no 2-5-15-41 showing the position of the nest. Young can be seen by close inspection of picture, being represented by a small white dot. The adult birds would invariably leave the nest and sail around cliff beyond. Condition of snow and advance of season indicated in this picture as well as those to follow. One of the two young birds perform