

Hudsonian 410625-88, calling on north exposure, three *Hylonchla guttata* singing, *Junco corniceps* calling. 3 *Junco corniceps* singing to north; *Ceuthomias* called, *Spinus pinus pinus* flew by, *Junco corniceps* called; *Ceuthomias*. 8:26 A.M. now on divide and flat beyond the precipitous cliff section of ridge. *Salpinctes obsoletus obsoletus* called, as I walk along can hear 3



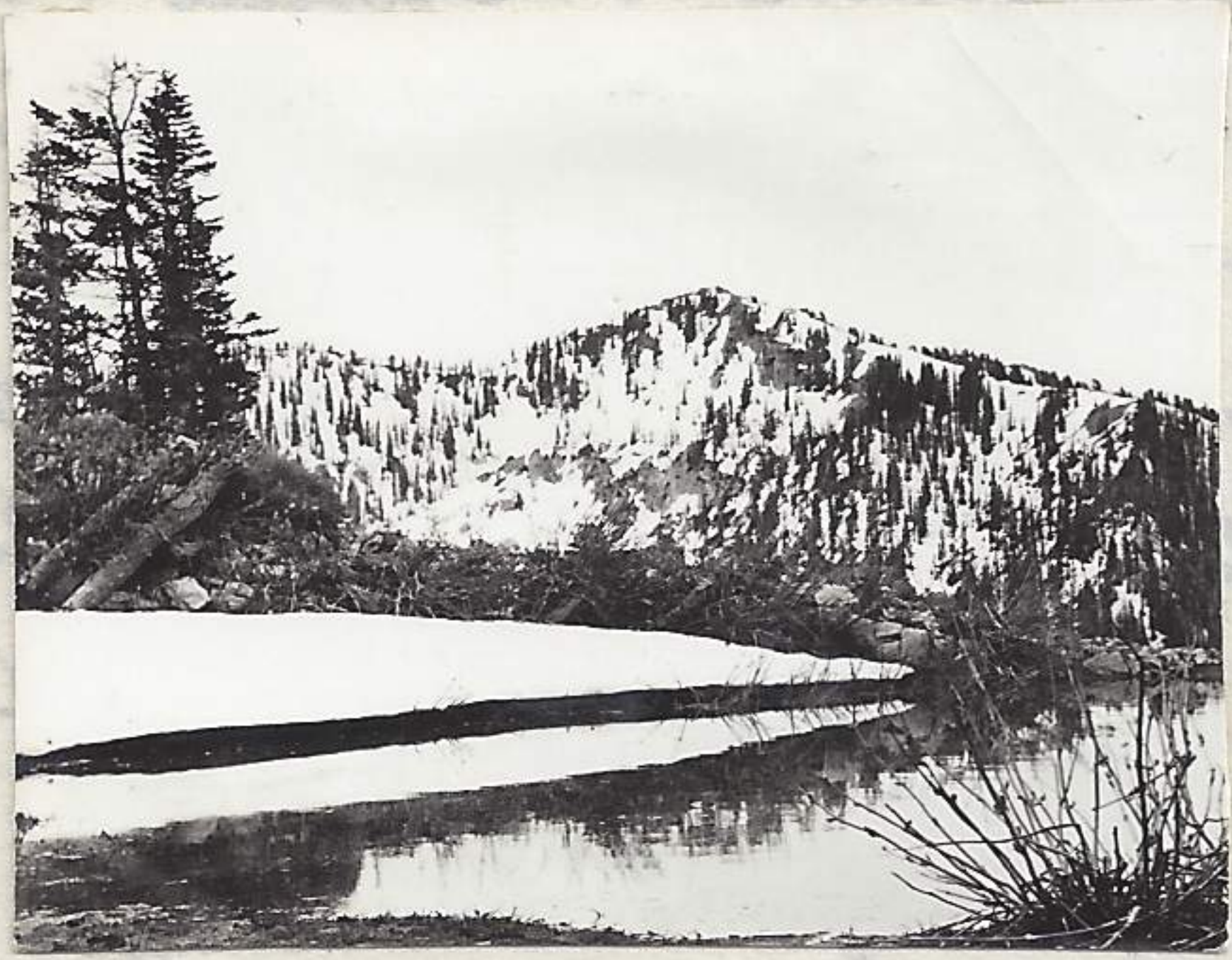
*Hylonchla guttata* singing, 4 *Junco corniceps* singing, *Ceuthomias*, *Salpinctes obsoletus obsoletus*, *Dendragapus obscurus obscurus* and *Cyanocitta stelleri cottami*.

Occasionally a deer track. These birds recorded are not duplicates as was the five minute census of songs heard below. 8:45 A.M.

1-6-25-41

*Penthestes*, *Spinus pinus pinus*, *Colaptes cafer callaris*, *Myiodes townsendi*, *Cyanocitta stelleri cottami* in conifers below to south; pair of flycatchers (?) one with ruffed head feathers and possessing a very sharp call. fresh deer tracks on snow bank, observed deer below to right. Deer track more numerous. 9:00 A.M.

*Myiobates villosus monticola*, *Hylonchla guttata*, *Junco* still singing, *Asikin* flying by. Six *Citellus armatus*, water entering gopher holes, vegetation just pushing up and about 4" high, fewer birds across the more open flats at the base of the peak; badger holes definitely correlated with *Citellus* areas. Dead *Citellus*, coyote tracks around edge of snow. Continued over ridge and dropped down into a lake at head of Bopelder Canyon arriving at 9:25 A.M. Recorded



2-6-25-41

picture no (2-6-25-41) of lake with American Fork ridge in distance. It was along this ridge that I later traversed in the afternoon after descending Bopelder Peak. Fresh deer and coyote tracks around edge of water. Spring running good. Left lake at 10:00 A.M. and tramped toward base of

Bopelder Peak. *Hylonchla guttata*, *Nucifraga columbiana* in dwarfed conifers, thrush singing in conifers also. Group 5 *Nucifraga columbiana* in area also another group of 2, occasional gullies ranging from 5' to 25' in width. *Nucifraga*