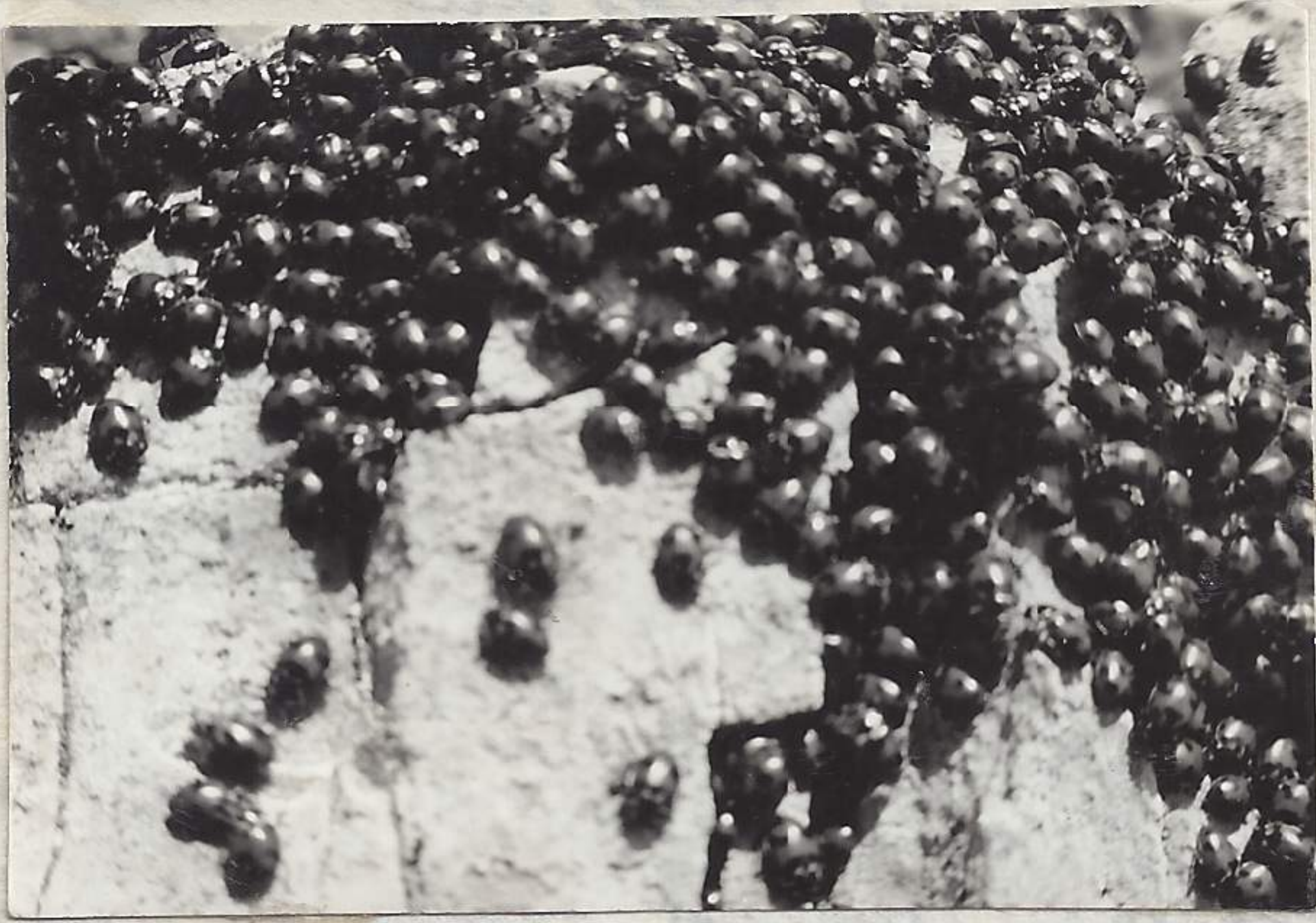


410625-90

no 6-6-25-41 was taken showing *Tempanogas* in background and course taken. The open exposed area supported *Citellus armatus*. Pictures taken later in day from ridge in middle right hand side. Arrived at top of *Bahlder* at 1:45 P.M. Pika in



6a-6-25-41

occasionally. From the top recorded picture of Granite Range. (6a-6-25-41) (could have been taken on ridge to north but did not record at time so represents a question as to position taken. Made descent down



6b-6-25-41

erosional gulch filled with snow, and cow say was made in no time flat. Was able to initiate a considerable forceful snow slide. As I approached the pass found the *Citellus* everywhere. Coyle flew in cirque east of pass. A marmot call in response to the eagles passage. Arrived at pass at 2:12 P.M. Picture



7-6-25-41

no (7-6-25-41) taken just before arriving at Pass. Dist-ant peak destination of next movement. In this area found the *Spinus pinus pinus*, *Micropiza columbiana*, *Citellus armatus*. At pass proper found the snow covered with Colorado Blue Spruce cones, Coyle. Continuing south toward peak found 2 groups of 2 *Micropiza columbiana* and many *Citellus*

cirque to north. 200' down ridge to the west found aggregation of *Hypodamia lecontei* muls. Another group 20' down ^{west on ridge} from highest peak of *Bahlder* and to the west. Wouldnt guess or approximate the number. *Aeronautes sapatales sapatales* flew by

occasionally. From the top recorded picture of Granite Range. (6a-6-25-41) (could have been taken on ridge to north but did not record at time so represents a question as to position taken. Made descent down erosional gulch filled with snow, and cow say was made in no time flat. Was able to initiate a considerable forceful snow slide. As I approached the pass found the *Citellus* everywhere. Coyle flew in cirque east of pass. A marmot call in response to the eagles passage. Arrived at pass at 2:12 P.M. Picture no (7-6-25-41) taken just before arriving at Pass. Dist-ant peak destination of next movement. In this area found the *Spinus pinus pinus*, *Micropiza columbiana*, *Citellus armatus*. At pass proper found the snow covered with Colorado Blue Spruce cones, Coyle. Continuing south toward peak found 2 groups of 2 *Micropiza columbiana* and many *Citellus*