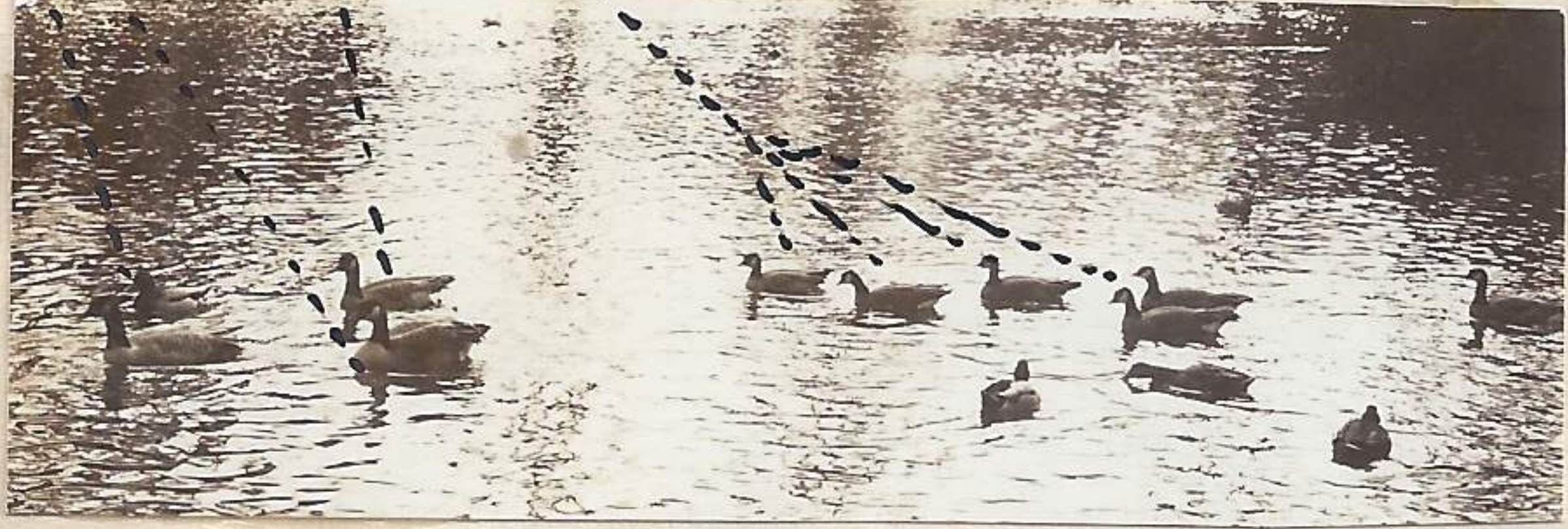


into the ^{wind} 41/227-144 ^{this} eastward flight is quite a regular feature with these herds.

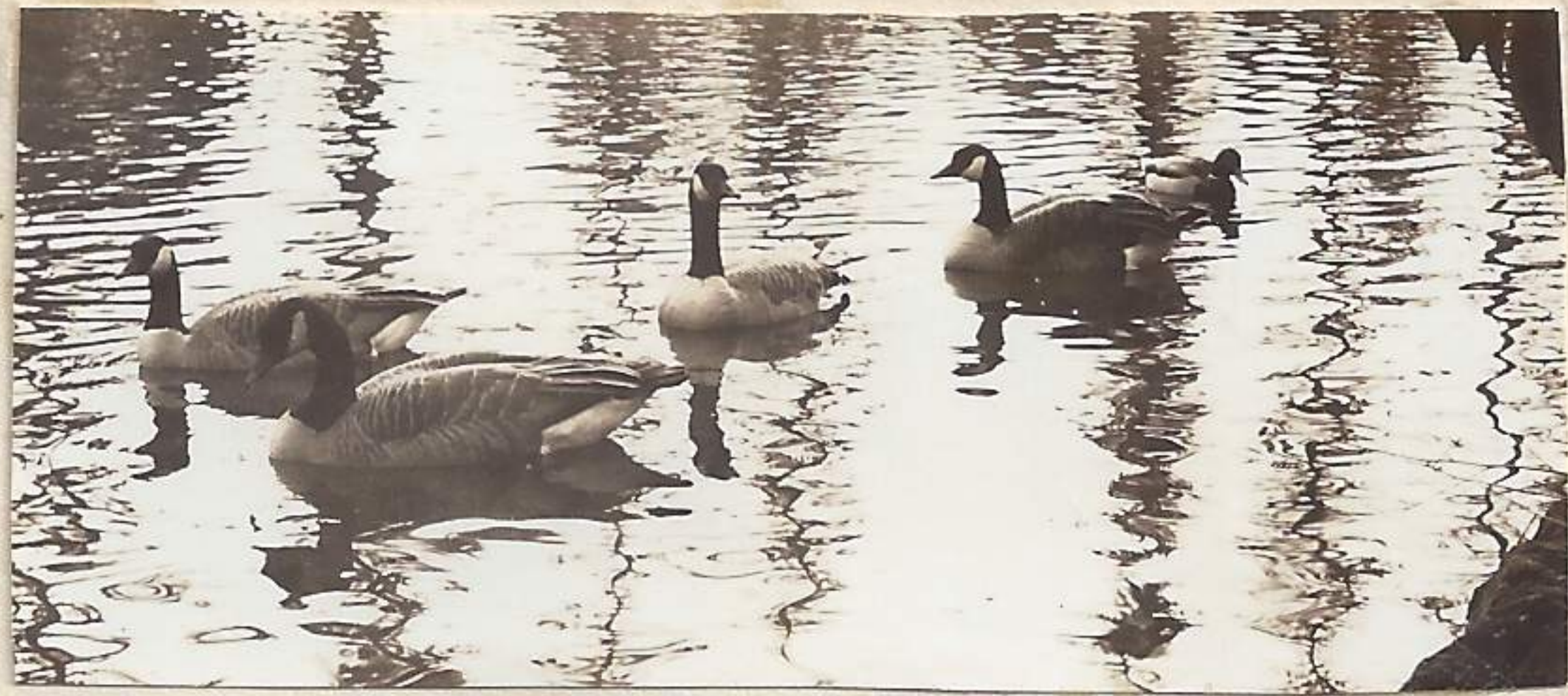
12/30/41

Took following pictures at Laurel Hurst Park in east Portland. The following species of birds were represented at the Park.

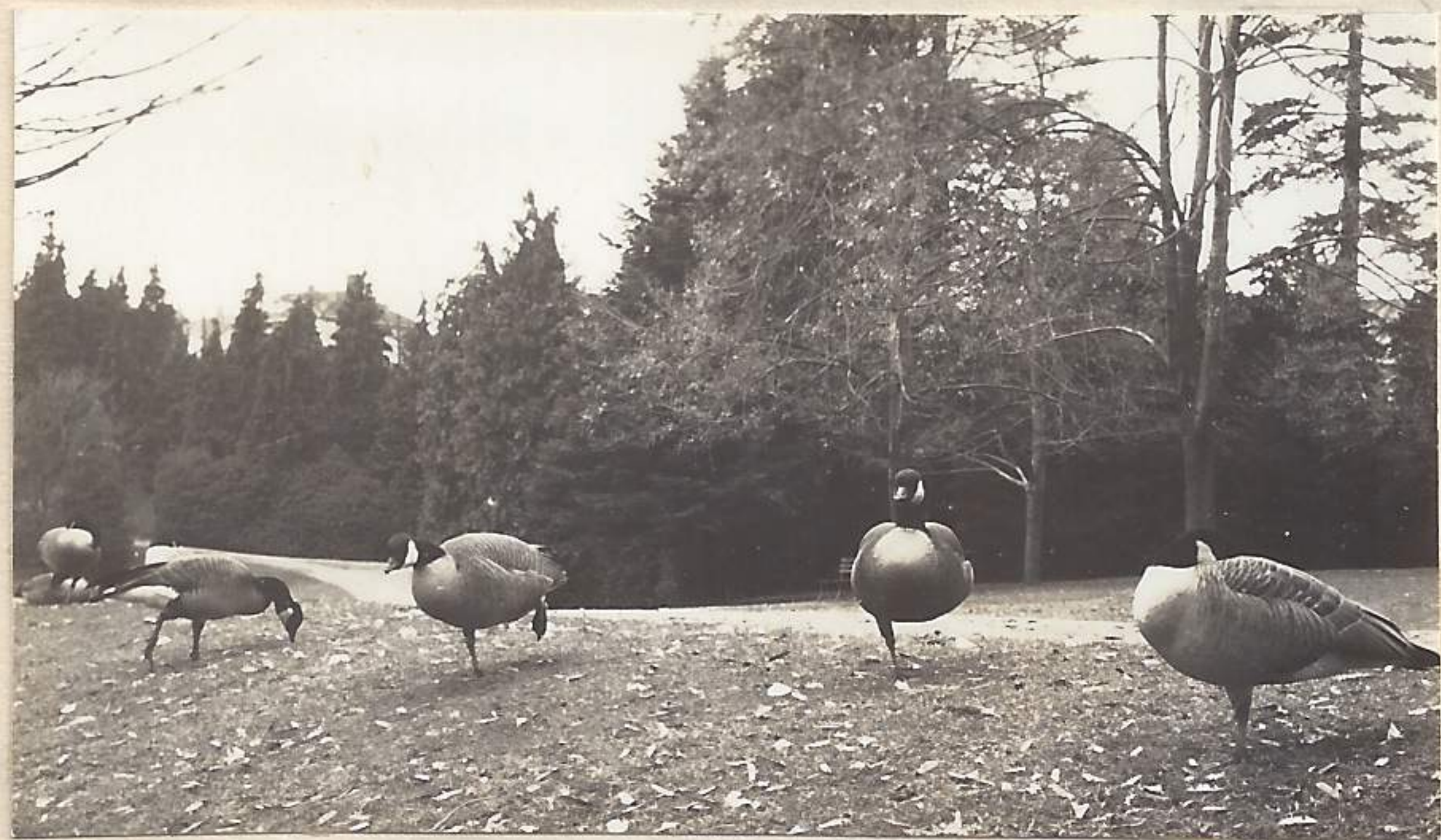
Branta canadensis canadensis
Branta canadensis occidentalis
Branta canadensis minima



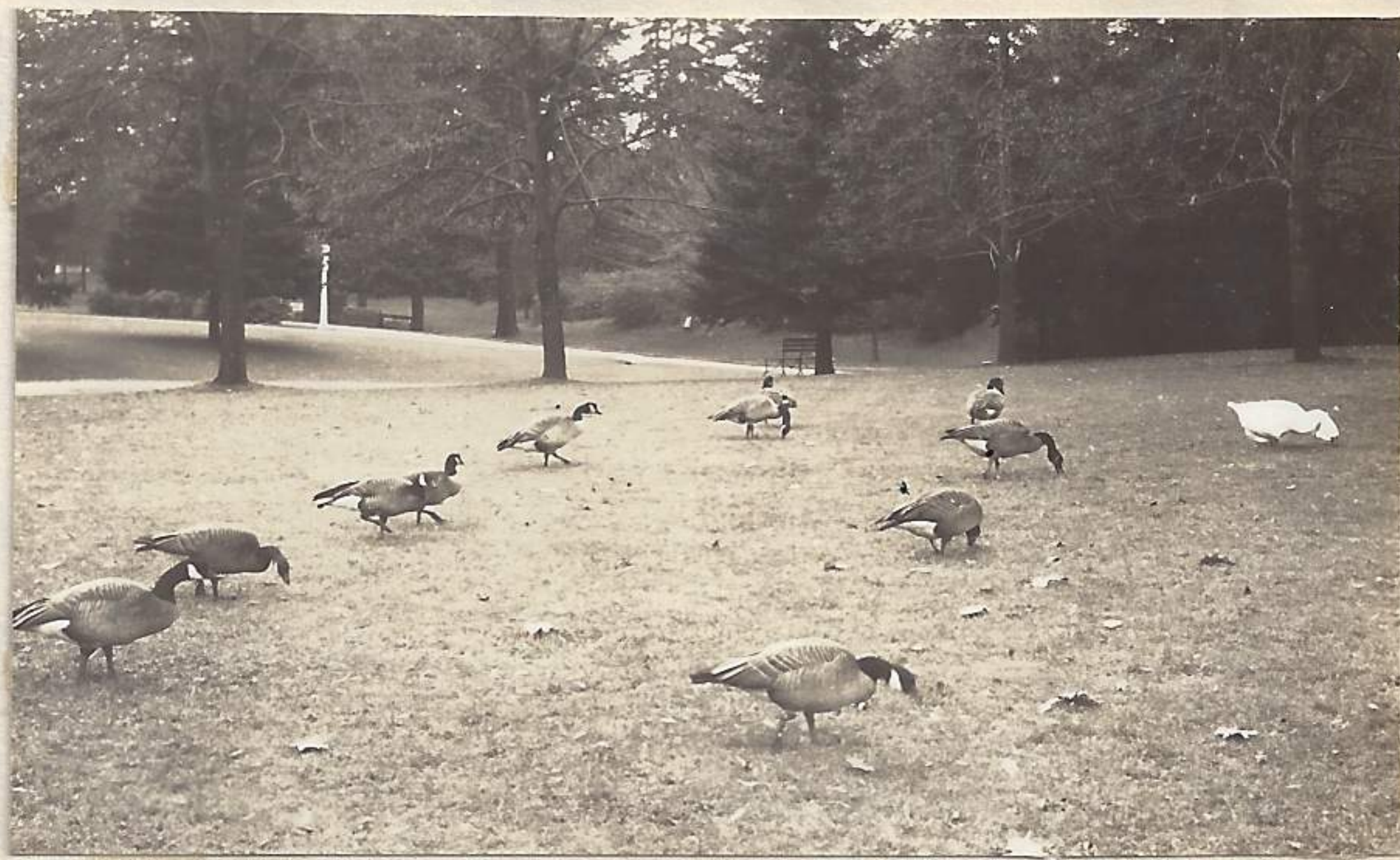
1-11-30-41



2-11-30-41



3-11-30-41



4-11-30-41

(no. 1-11-30-41) shows the comparative size of the three geese. The mallard duck can be used for comparison. While there was not too great a difference between the forms they do travel in separate groups peculiar to their own species.

(2-11-30-41) Group of *B. C. Canadensis* and possibly *B. C. o.*

(3-11-30-41) Species? probably *Branta. c. occidentalis*.

(4-11-30-41) Mixed group. Forward march! This is a regular tendency in feeding in groups.

Other forms represented at park are: Ruffle head, ring billed duck, Lesser Snow Goose, Pintail, mallards, Glaucous Gull, California Gull (!).