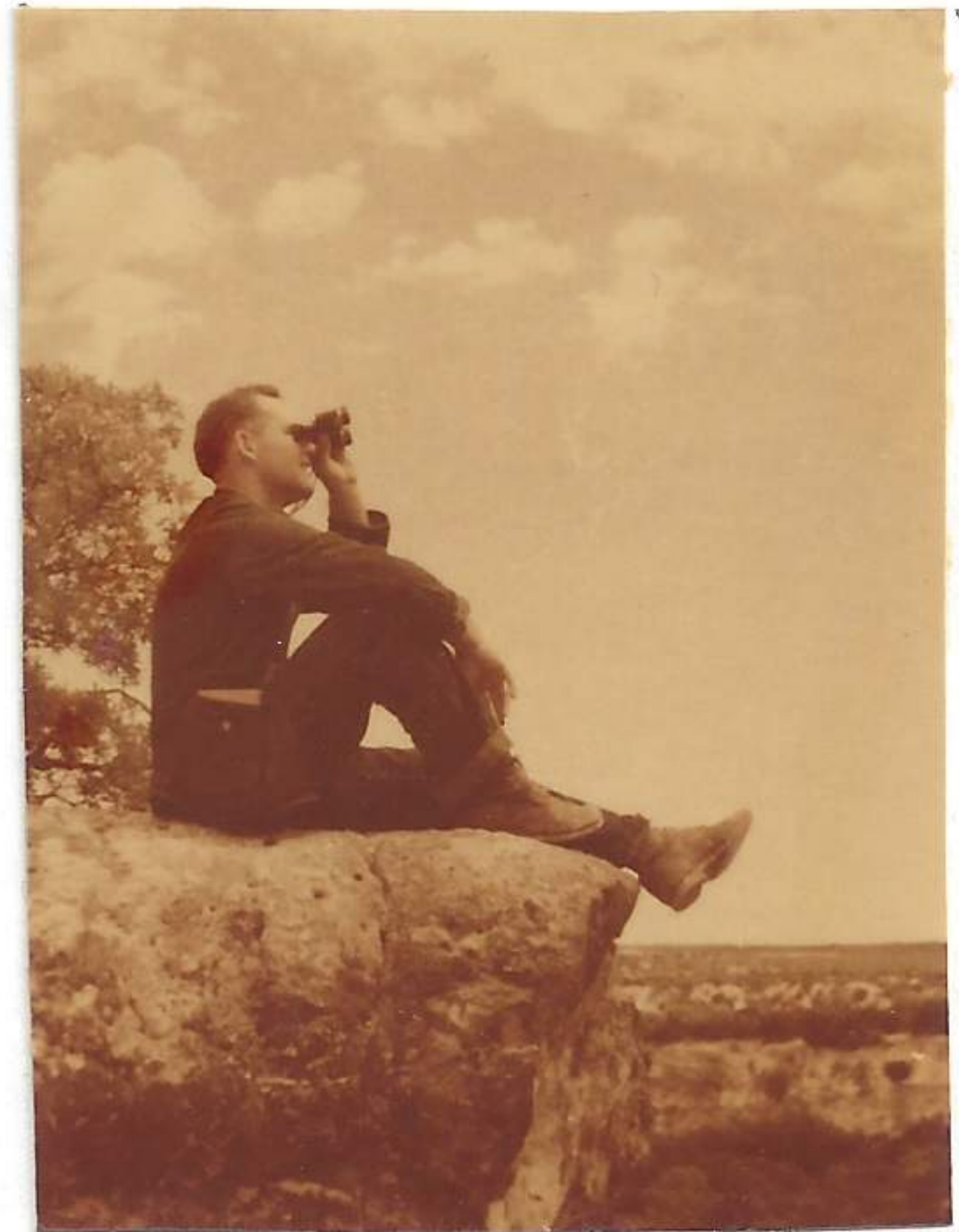


Camp Berkeley, Elm Creek, Texas

July 27, 1944

Observed the following birds along Elm Creek on this Army Reservation:

Coccyzus americanus americanus
Zenaidura macroura marginella
Cathartes aura septentrionalis
Chondestes grammacus strigatus
Mimus polyglottis polyglottis
Helodytes brunneicapillus cousei
Richmondia cardinalis concauda
Muscivora bifurcata
Corvus brachyrhynchos hesperus
Centurus aurifrons
Mniarchus cinerascens cinerascens
Baeolophus inornatus griseus.



J.W.B. taken by Lee Johnson
 Along Elm Creek.

July 28, 1944 (see page 85.1)

July 29, 1944

made census of Elm Creek in some general area as above:

Cathartes aura septentrionalis
Zenaidura macroura marginella
Baeolophus atricapillus sennetti
Chondestes grammacus strigatus
Richmondia cardinalis concauda
Corvus b. hesperis
Catherpes mexicana
Coccyzus americanus americanus
Piranga rubra cooperi
Vireo olivaceus
Passerina ciris
Penthestes atricapillus atricapillus
Mimus polyglottis.
Helodytes brunneicapillus cousei
Muscivora bifurcata
Centurus aurifrons(?)
Mniarchus cinerascens cinerascens
Corpodicus purpureus purpureus
 goldfinch (sp.?)
Carduelis acutipennis texensis
Phalaenoptila nuttalli
Chaetura pelagica