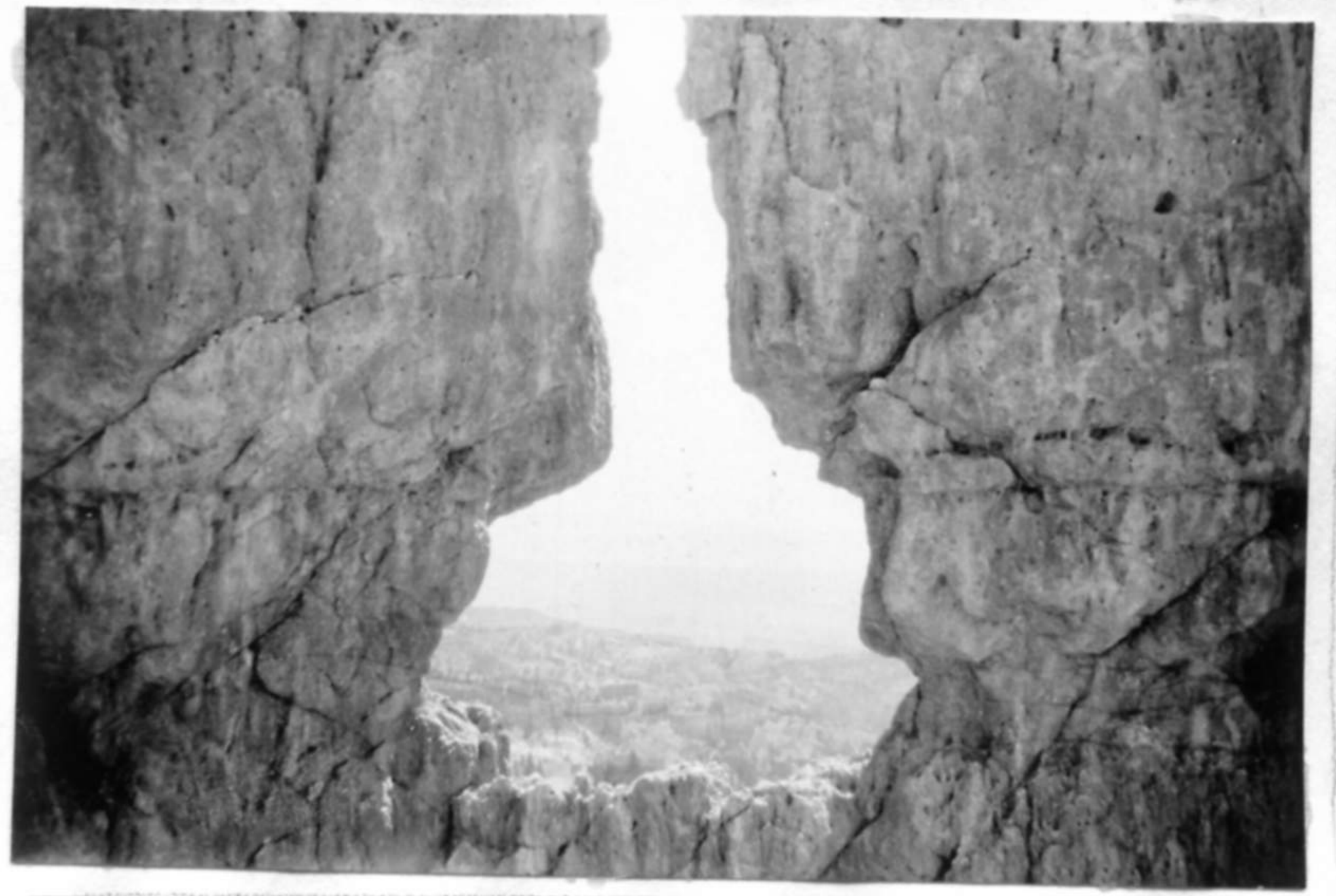
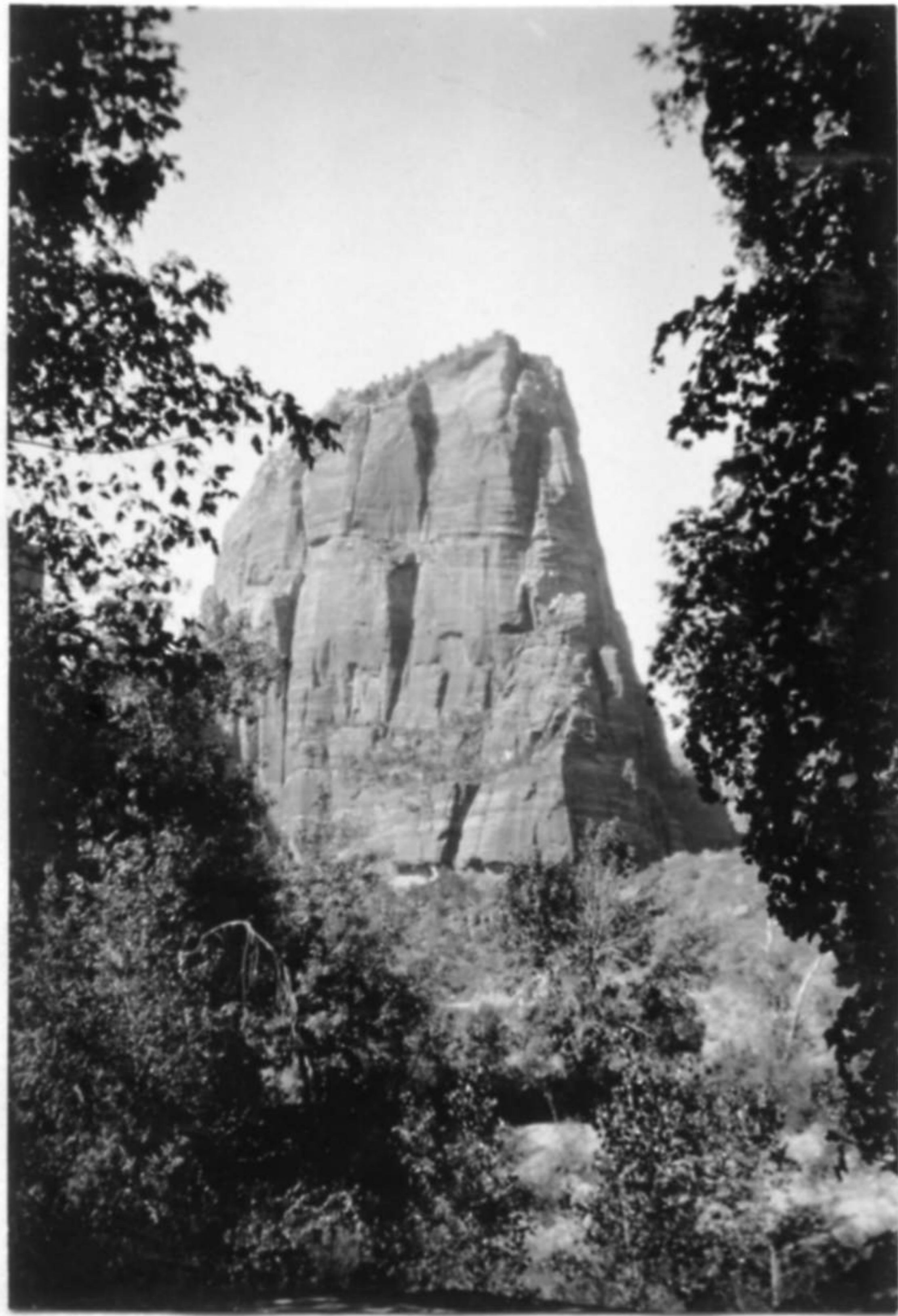




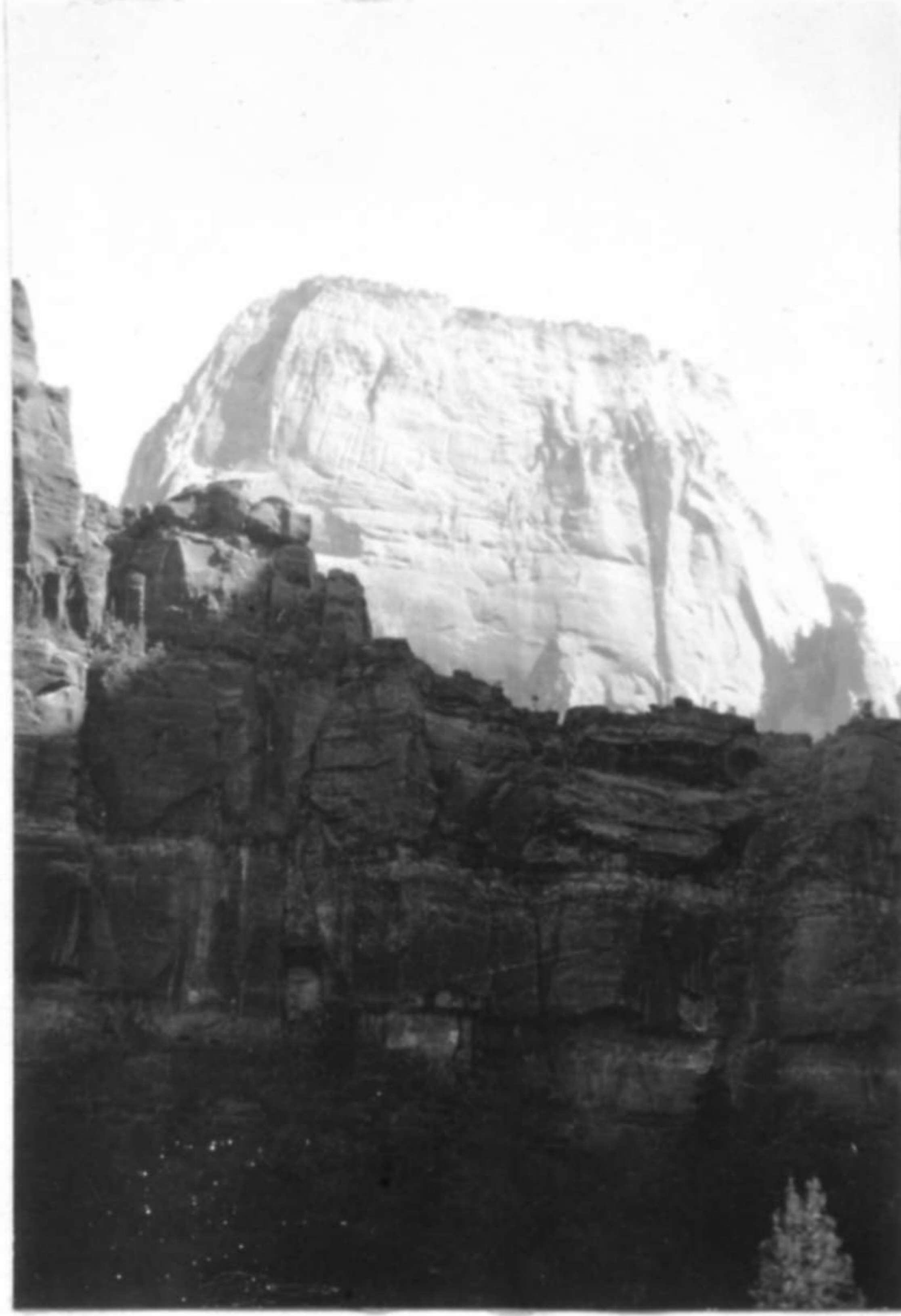
2-9-1-27



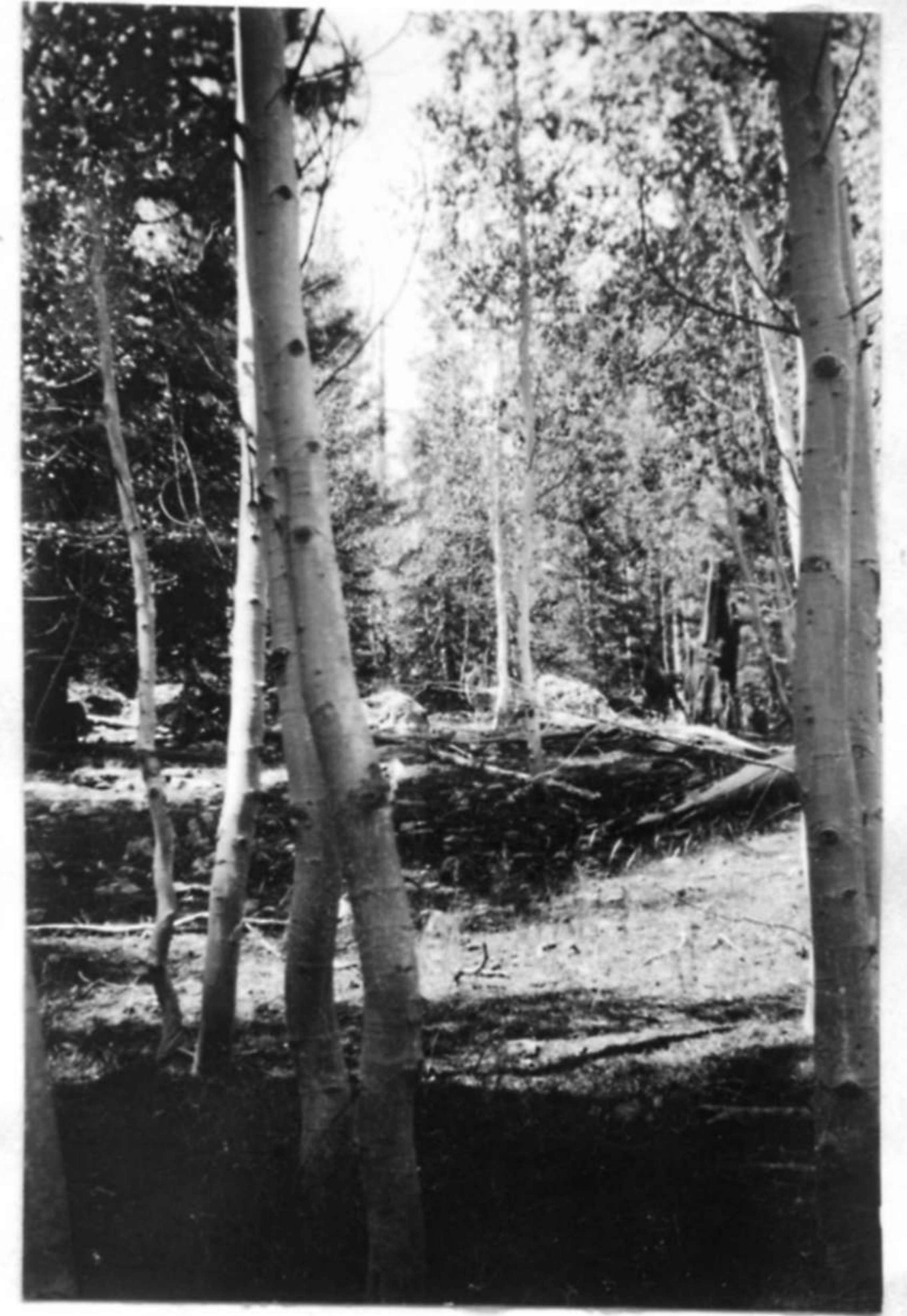
3-9-1-27



1-9-3-27



2-9-3-27



1-9-5-27

to have changed a little, but nevertheless interesting. At Bryce we stopped for a day or so and hike all next day in the deep canyons where there were no trails to be found. In this hike I took a couple or so pictures showing the formations. Picture no. (1-9-1-27) is of a balanced rock. It isn't in any danger of falling over yet however. Picture no. (2-9-1-27) is a natural bridge in a series of formations. The base of these cliffs is a beautiful yellow clay. No. (3-9-1-27) shows a partial natural bridge with a continuation of the country beyond. From Bryce we visited Cedar breaks and Zions. At Zions we hiked the narrows. At this park took two of the most commonly taken pictures of the Park. no. (1-9-3-27) shows Bright Angel point. no. (2-9-3-27) shows the Great White throne. At the Kaibab Forest took picture (1-9-5-27) of the lone deer in timber near V.T. Ranch. The deer feed back into the deeper forest with the shortening of the morning shadows, and when one goes into the fringes of the forest he finds the deer bedded down or quietly feeding among the aspens and conifers. This deer is seen in the center of the picture.