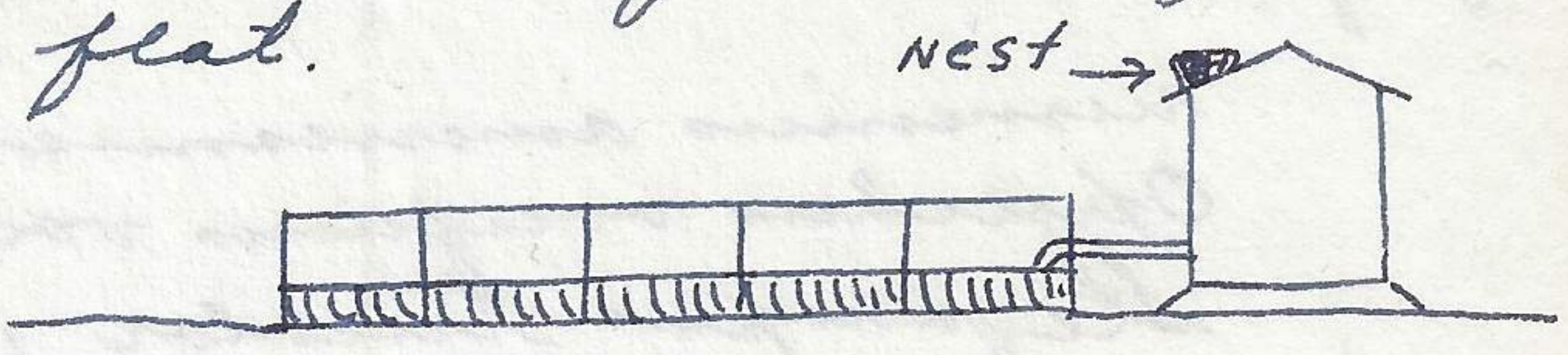


springs found a raven nest with 2 fresh eggs. Both birds at the nest when approached. This nest was a peculiar one in that it was placed on top of a tin water tank. This tank was several miles from the valley bordering range and stood out upon the flat.



It was 10 feet from ground and precariously placed on the very edge of roof. In fact they had attempted to build their nest in the same place previously but either the wind had dislodged it or someone had pulled it down. The nest could be pushed around on the top of the roof. Birds returned after we were 300' from tank. At Simpson spring found an excellent growth of *Sarcobatus* above the springs. The view across the valley was indeed beautiful from this point. 40 raven were feeding together near the springs and as we arrived they left and gradually dispersed. Some going high up the mt slope while others were seen working both up & down the range. A *Crotalus* was in road 1 mile north of springs. One sparrow hawk and one *Citellus mollis* were in same area. The whiptail snake and gopher snake were also found in this valley but farther to the south. In skull valley recorded 2 raven, 1 raven, 1 hawk, lark sparrow. Rush valley held 1 *Citellus mollis mollis*, 1 raven, 2 *Citellus m. mollis*. Between reservoir and ranch north of Vernon to 5 mile pass found 1 raven. At Five mile pass 2 *Citellus m. mollis*. Fairfield 1 raven. Near the juniper grove south of 7 mile Pass found six jackrabbits, the first ones observed on trip from Fish Spring. These rabbits were within 1 mile stretch adjacent grove area. The return trip netted us 55 raven as compared to 10 on trip over. and this census was quite accurate. The count of hawks and falcon was also accurate.

Sandhill flights observed during our stay at Fish Springs. Red line may 3rd others may 2nd. The birds shifted around more than is indicated but these movements were the only ones observed. Outer range approx 1/2 distance across the marsh. Most of the activity in green scirpus area of marsh.

