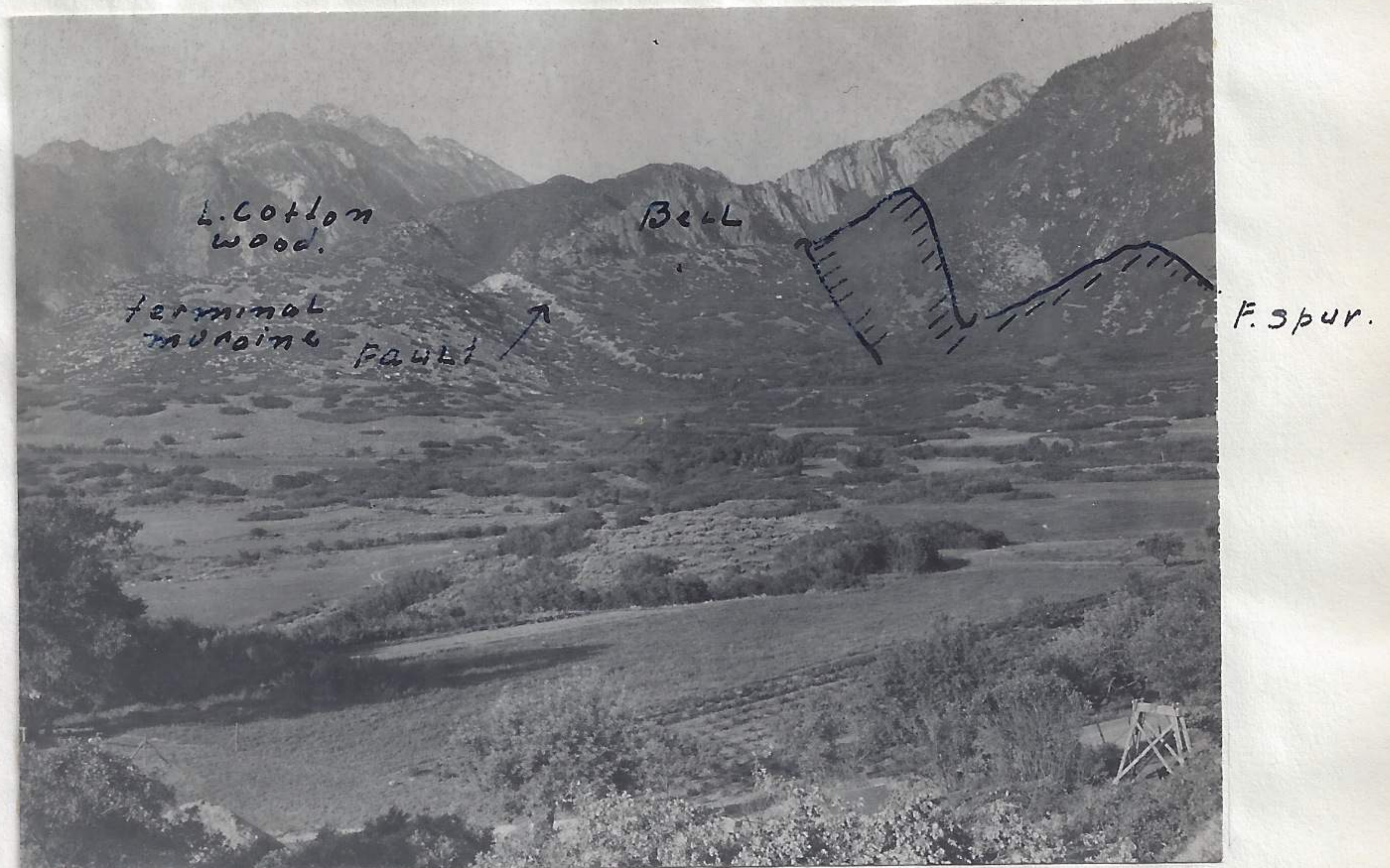


1-6-4-46 (see page 460610-53)

1-6-5-46

Mouth of Bell and Little Cottonwood Canyon in Wasatch County. The shot indicates the extent of the glacial deposit at the mouth of the canyon and recent faulting across the moraine material. This deposit rests upon the old facet of the main mountain ridge and antedates the glacial action.



1-6-5-46

1-6-9-46

Annette, mother & Dad at payson reservoir. Hunt of about 12 deer on looper one at mouth of Payson ^{wabber} canyon. Collect Audubone and Audubon Hermit Thrush. One albino delphinium found. Skunk cabbage in leaf but not flower, some 13 feet high. Mule ears in flower. 2 looper flying along ridge at mouth of canyon. Frogs singing and Bufo active around edge of lake.



1-6-9-46

1-6-9-46

1-6-10-46

Joseph Smith build-
ing on B.C.C. Campus
Taken with Sec Pant
defender film at
 $\frac{1}{50}$ sec and 22 opening.



1-6-10-46

1-6-10-46