

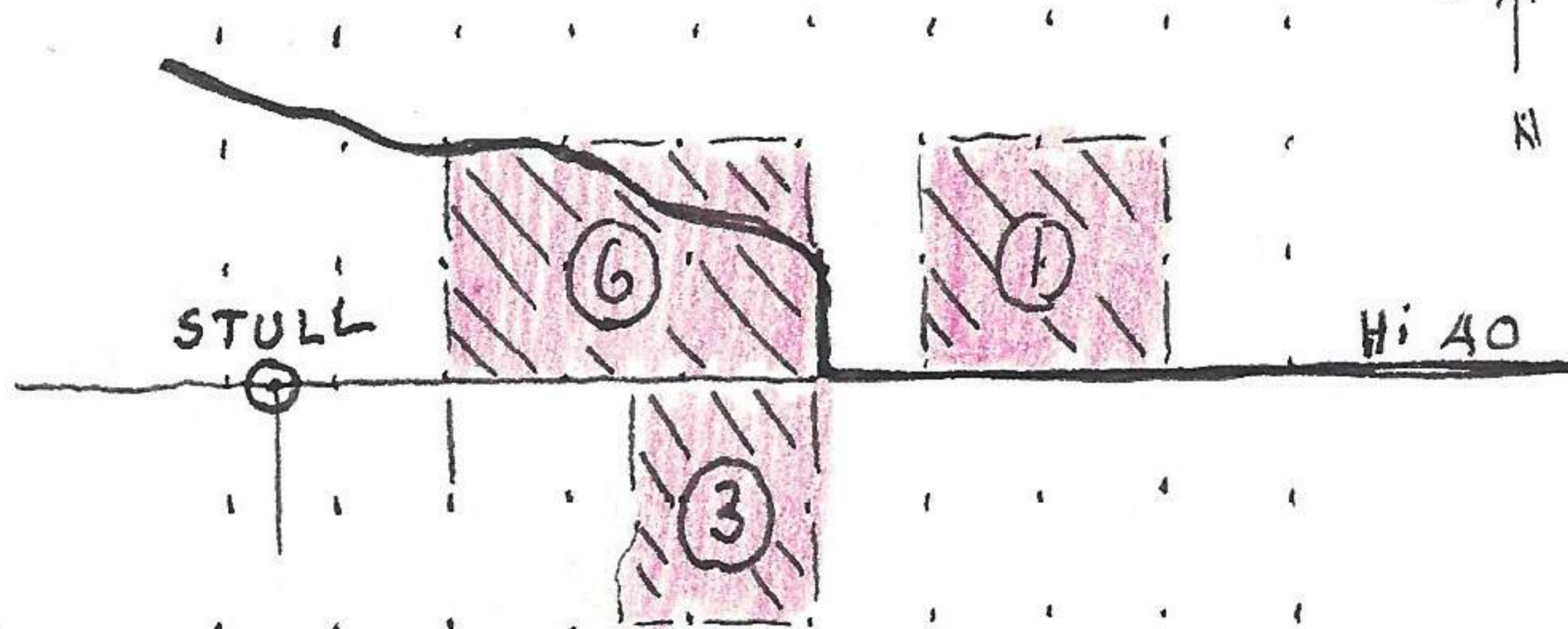
7-12-21-47	<i>Geomys hispidus</i>	♀	231-96-29.5-17-71	skull only
11-12-20-47	"	♂	208-90-28-16-49gms	" "
4-12-20-47	<i>Reithrodontomys</i>	♂	150-80-20-14-10gms	" "
9-12-20-47	"	♂	165-85-19.5-14-14gms	" "
19-12-20-47	<i>Geomys hispidus</i>	♂	193-84-27-15-42gms	" "
5-12-20-47	<i>Reithrodontomys</i>	♂	150-80-20-14-10gms	" "
10-12-20-47	<i>Geomys hispidus</i>	♂	200-86-28-16-46gms	" "
8-12-20-47	"	♀	190-80-27-15-41gms	" "
7-12-20-47	<i>Sylvilagus floridanus</i>	♂	345-40-88-60-	skull only.

Departed mena for Lawrence at 7:45 P.M. mileage 16653. Collected *Sylvilagus floridanus* 1-12-22-47 at mileage 16699 associated with yellow pine and hilly country. at 16721 miles a *Sylvilagus floridanus* road kill. at 16853 miles crossed Elk River. *Podilymbus podiceps* here. Arrived Lawrence 5:00 P.M., mileage 17085.

Stull, Douglas Co., Kansas

Dec. 23, 1947

Local farmers conducted a coyote drive this A.M. in the areas indicated in red. area between dots are square mile. 6 sq miles = 6 coyotes; 4 sq miles = 1; 3 sq. mile = 3. or 10 coyotes per 13 square miles or .77 coyote per sq. mile.

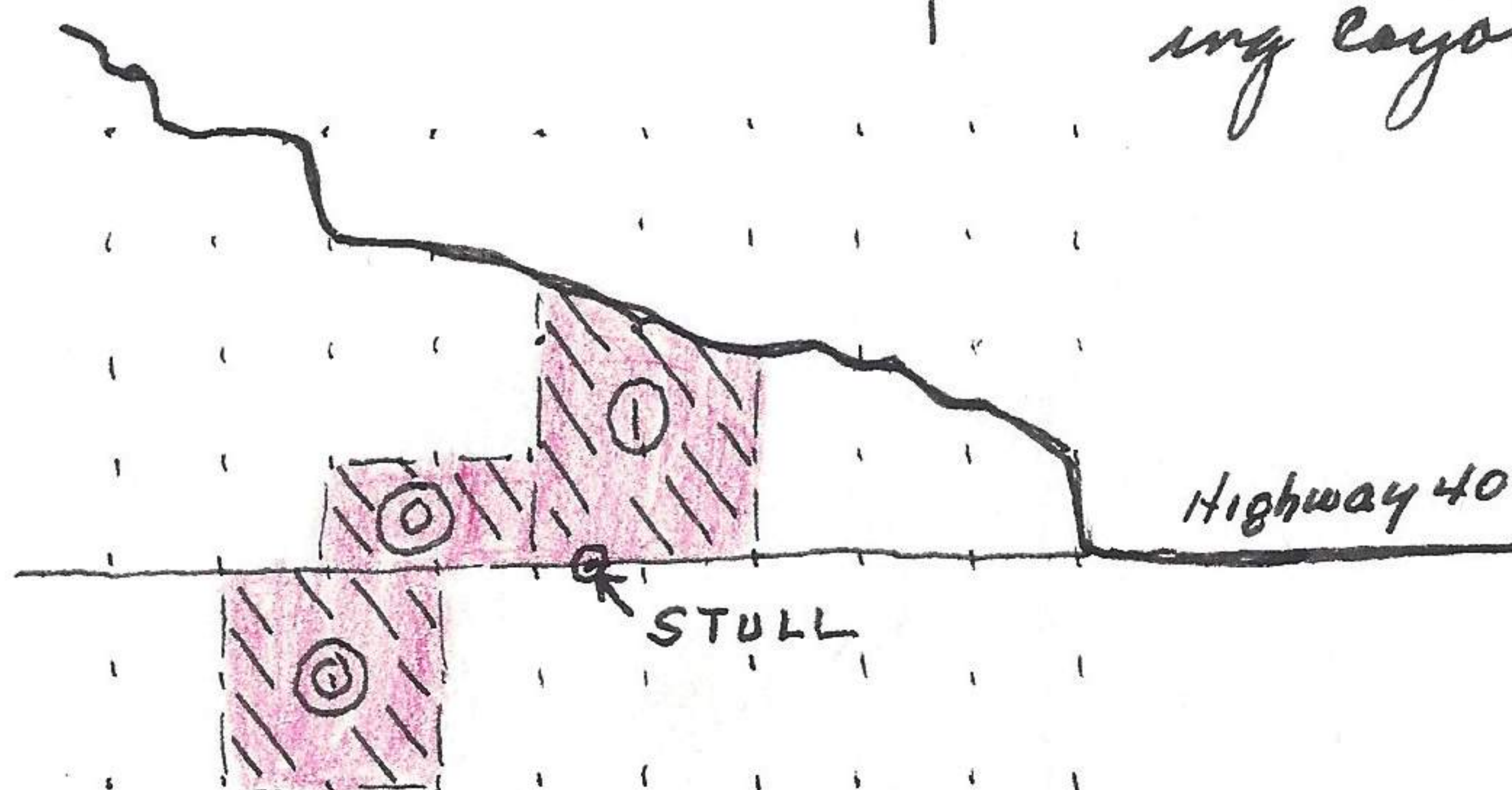


(see next page of measurements of the above 10 coyotes).

Stull, Douglas Co., Kansas

Dec 27, 1947

Local farmers conducted the following coyote drive.



5 sq miles = 1 coyote; 2 sq miles = 0; 4 sq miles = 0. or 1 coyote in 11 square miles or .09 coyote per square mile.