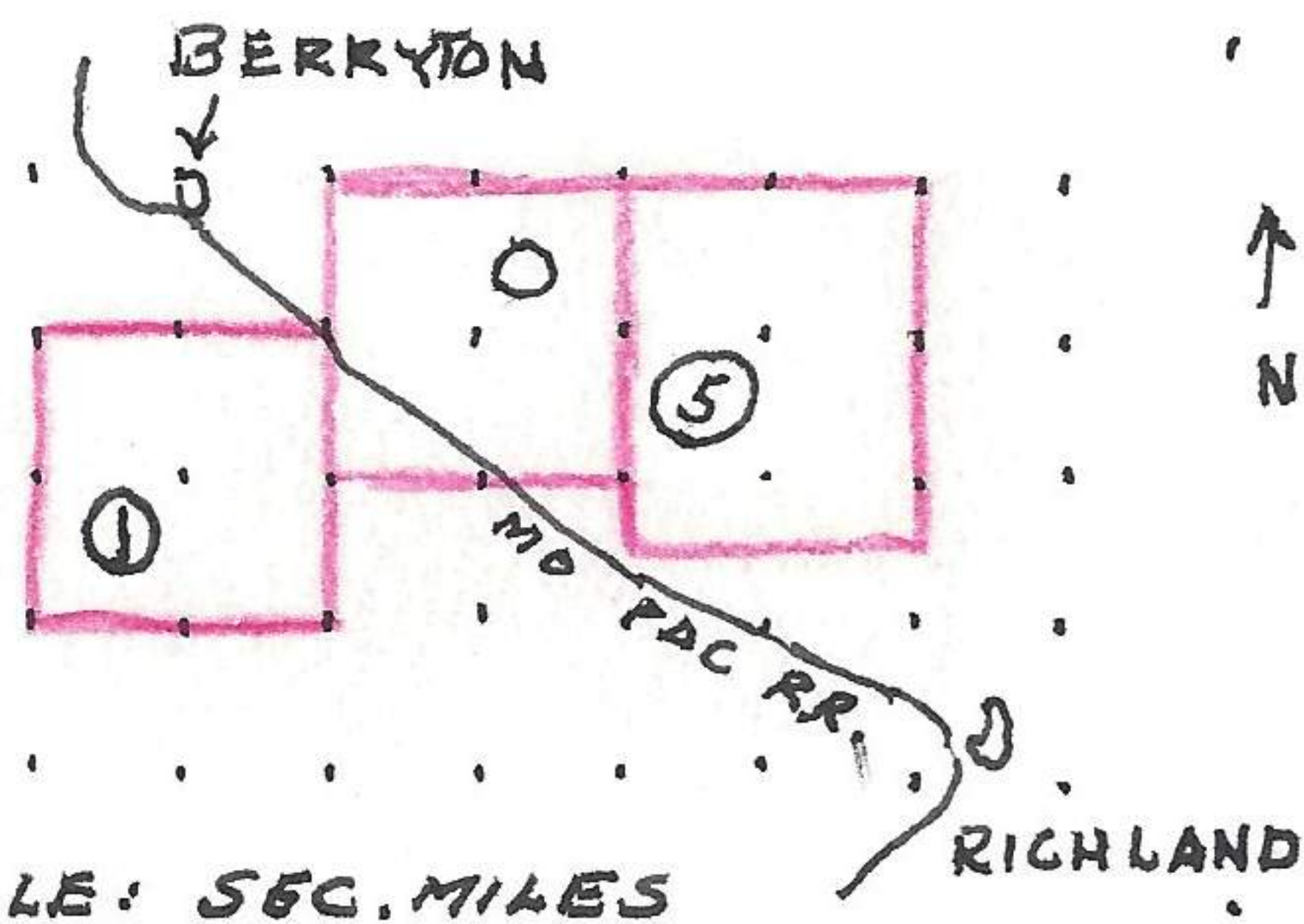


no coyotes the second year in the identical same area. "Coyotes tend to remain in the same area." "Coyotes will chase farmer, dogs out of the fields." "Cross breeding with dogs is very unlikely," "Coyotes are frequently taken 2 or 3 miles from the outskirts of Topeka," "Coyotes can hole up under very small objects like logs, rocks, ledges." "Trails common in field after snow." "Many call regularly at night + morning from top of haystacks," "Farmers have hunted coyotes for the last 20 years but only the last 4 years as organized hunting parties," "Each hunting group will sponsor about 25 hunts per winter season." "Some of the older coyotes will do damage to sheep, calves and chickens but, on the average will not." "Areas inhabited by coyotes about 65% wheat, the remaining area shrubs, trees and other crops." "Last year we had to throw away six out of 12 cottontail rabbits, this year nearly all rabbits are fat and in good condition, very little evidence of disease." Approx 250 hunters participated in this roundup. Thirteen hawks, mainly *Circus hudsonicus* and *Buteo borealis* were killed. The coyote killed today was purchased for 2 dollars and I will examine for tularemia tomorrow. Specimen number 6-1-12-48.

2 mi. N W Richland, Shawnee Co., Kansas

Jan 12, 1948

Joined coyote drive sponsored by Berryton farmers. These



men are well organized and conduct their roundup with experience and obedience. No one allows the lines to gap or lag and as a result they are generally more successful in getting the highest percent of coyotes in any one area. Six coyotes were shot in the three

roundups, one hunt in the morning and two in the afternoon. I purchase seven coyotes for \$2 apiece, the seventh one is one that was brought in from the field from a previous hunt.

1-1-12-48	♂	<i>Canis latrans</i>	1200-380-208-112	skull only	K.U no 21999
2-1-12-48	♂	"	1180-350-205-113	measurements only	"
3-1-12-48	♀	"	1175-350-189-111	"	"
4-1-12-48	♂	"	1181-340-191-112	skull only	K.U no 22000
5-1-12-48	♀	"	1190-320-194-112	skull only	K.U no 22001
6-1-12-48	♀	"	1130-330-193-108	skull only	K. no 22002