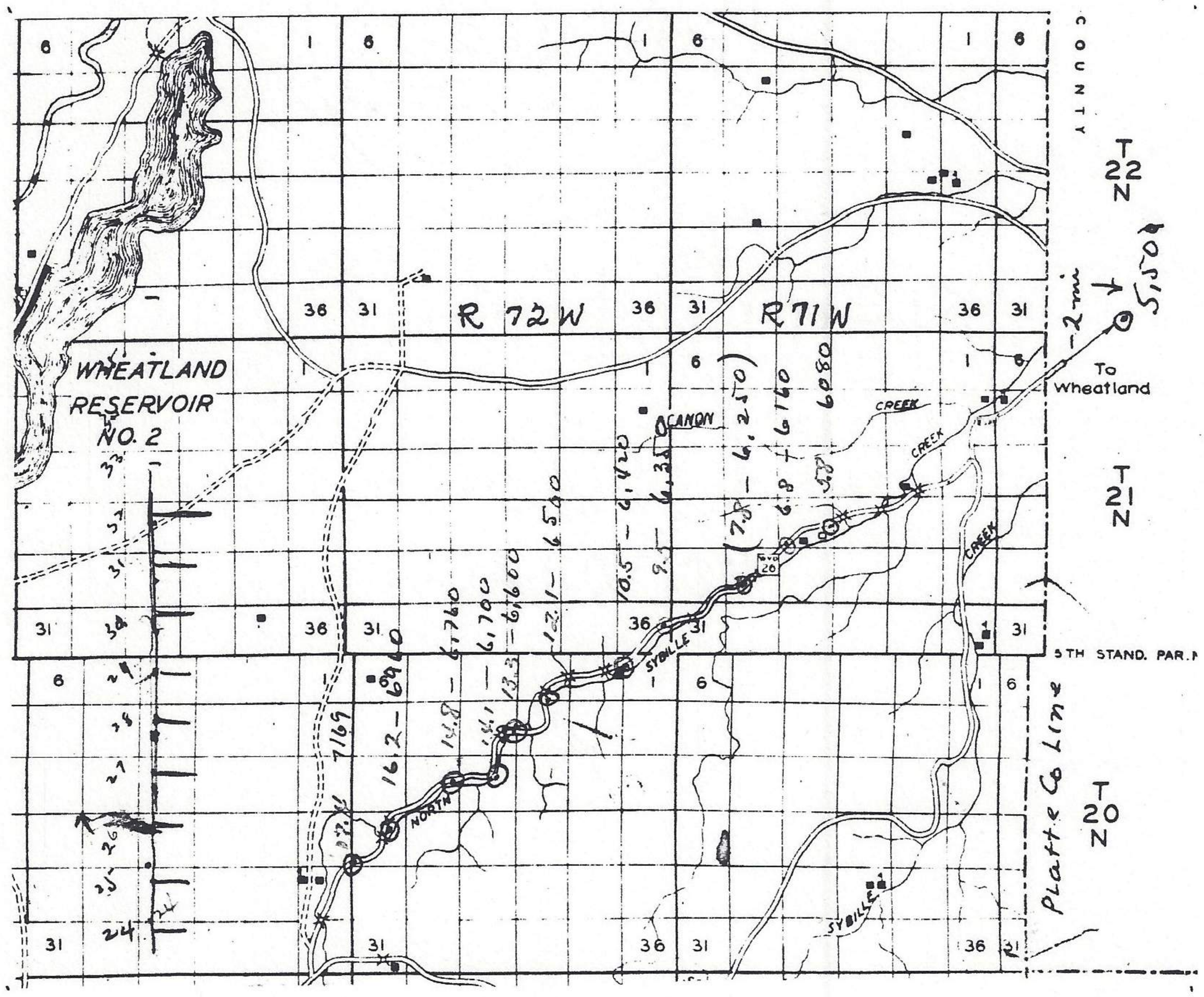


- 27 3/4 mi. N and 6 3/4 mi. E Laramie, 6600 ft., Albany Co., Wyoming  
or 13.3 mi. up Sybille Cr on highway 26 from Albany-Platte Co. line.
- 28 1/4 mi. N and 7 1/4 mi. E Laramie, 6500 ft., Albany Co., Wyoming  
or 12.1 mi. up Sybille Cr. on highway 26 from Albany-Platte Co. line.
- 29 mi. N and 8 3/4 mi. E Laramie, 6420 ft., Albany Co., Wyoming  
or 10.5 mi up Sybille Cr on highway 26 from Albany Co.-Platte Co line
- 29 3/4 mi. N and 9 1/2 mi. E Laramie, 6350 ft., Albany Co., Wyoming  
or 9.5 mi up Sybille Cr on highway 26 from Albany-Platte Co. line.
- 31 1/4 mi N and 12 mi. E Laramie, 6160 ft., Albany Co., Wyoming  
or 6.8 mi. up Sybille Cr. on highway 26 from Albany-Platte Co. line
- 32 mi. N and 12 1/2 mi. E Laramie, 6080 ft., Albany Co., Wyoming  
or 5.8 mi. up Sybille Cr on highway 26 from Albany-Platte Co. line.
- 35 1/2 mi. N and 18 mi. E Albany Laramie, <sup>5500 ft.</sup> Platte Co., Wyoming  
or 2 mi. down (SNE) from Albany-Platte Co on highway 26.

Focal point in Laramie for above localities is 1/4 mile east of corner of SW sec 28 of T16N, R 73W.



From Wyoming State Highway Department - 1936.