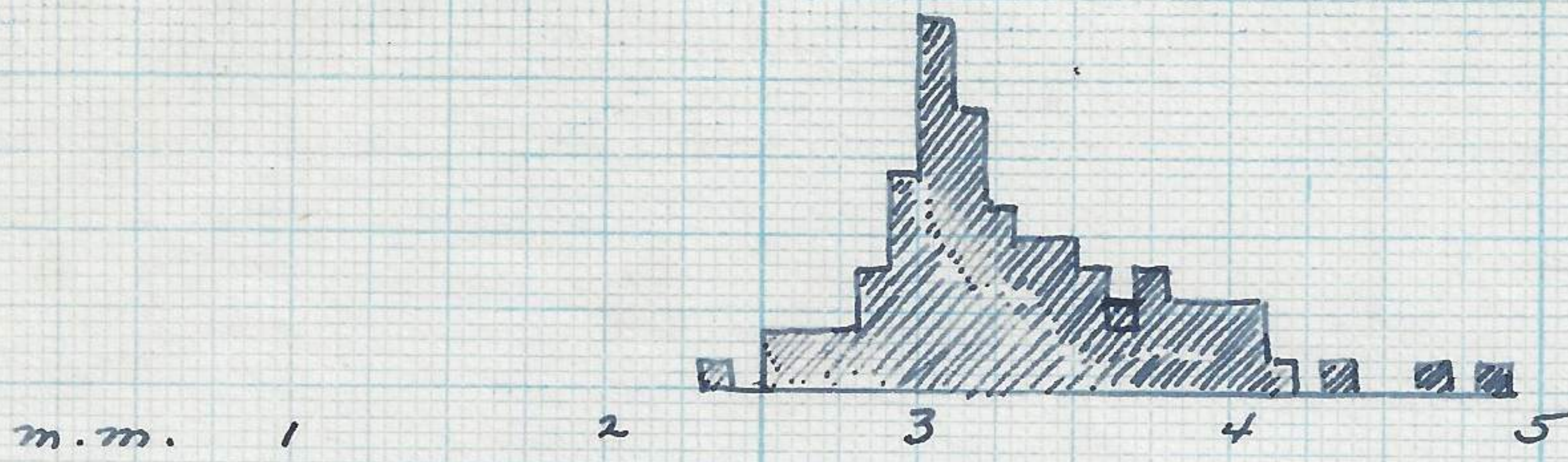


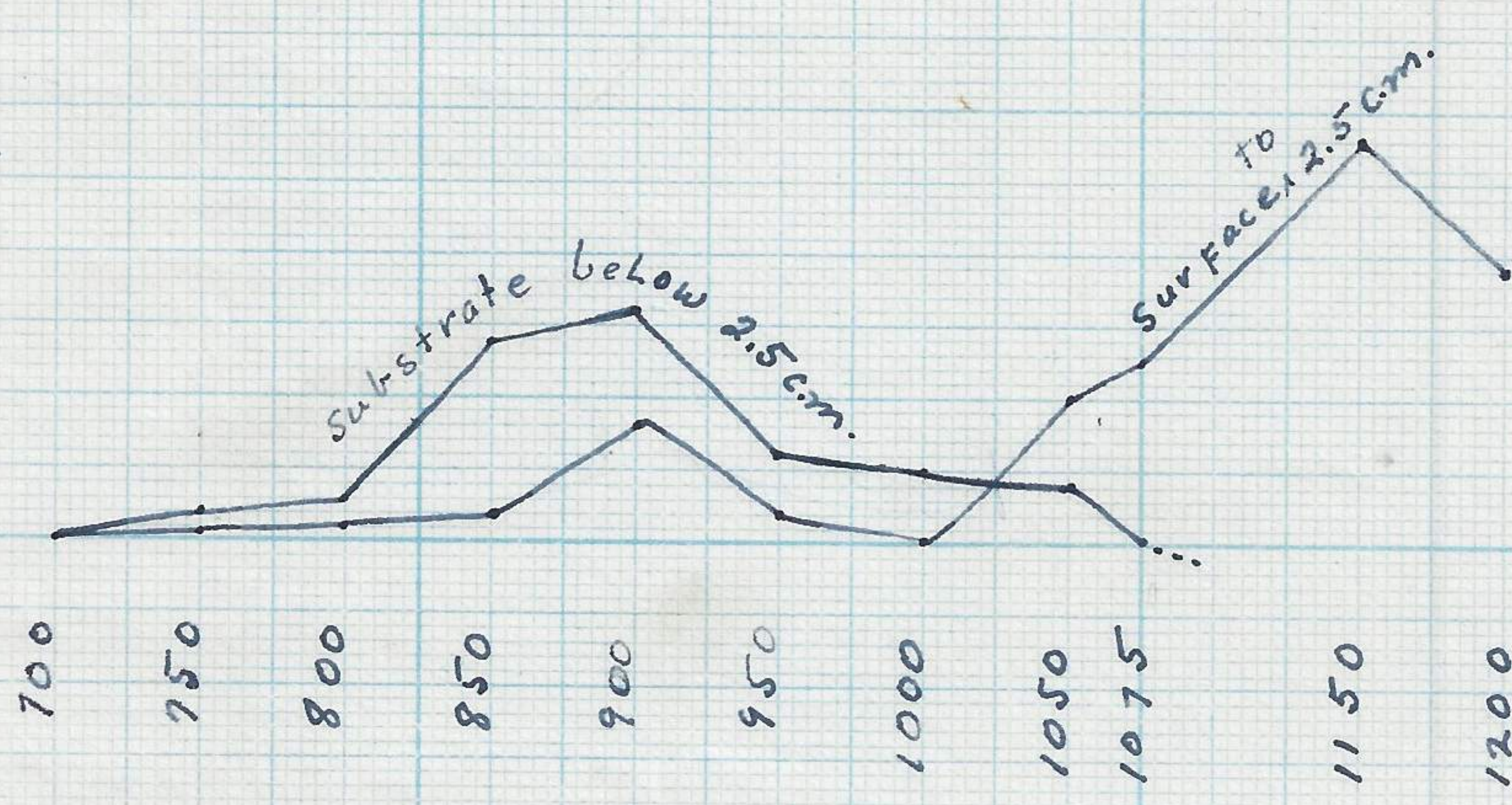
Frequency



Typical growth curve of *Rochfortia tumida* Carpenter taken from  $\frac{6}{10}$  sq. meter area 2.5 cm deep. From station 1075 meters.

Frequency

m.m.



Distribution of *Rochfortia tumida* showing tendency toward substrate existence above low tide and surface position below low tide. Crossover at approximately 1025 meter position.

Frequency

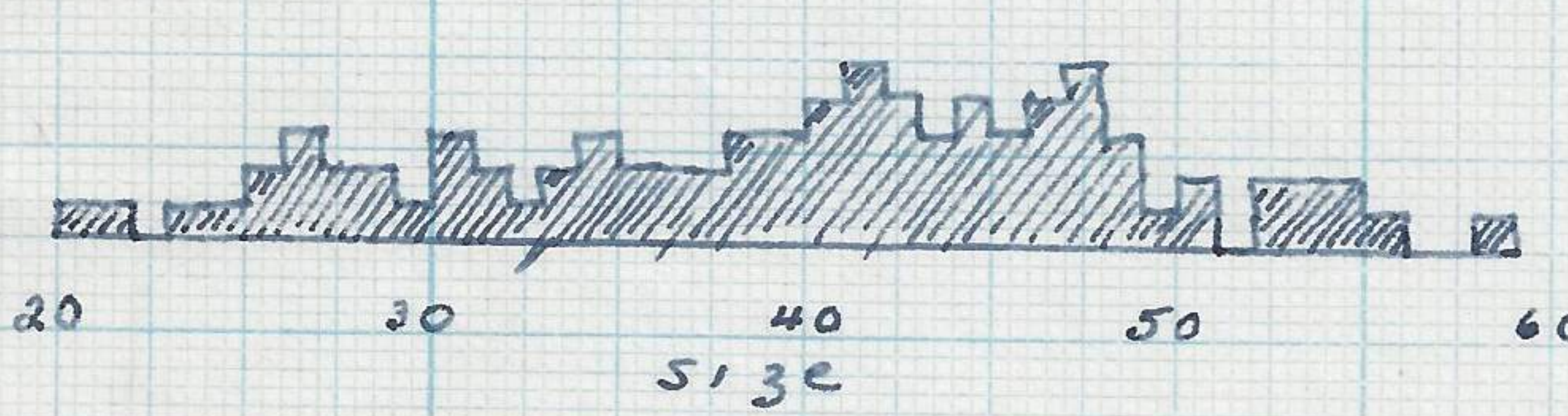
20

30

40

50

60



Growth curve of young *Transennella tantilla* (Gould) held within body of adult which measured 6.5 m.m. in length. Largest specimen measures .7 m.m.