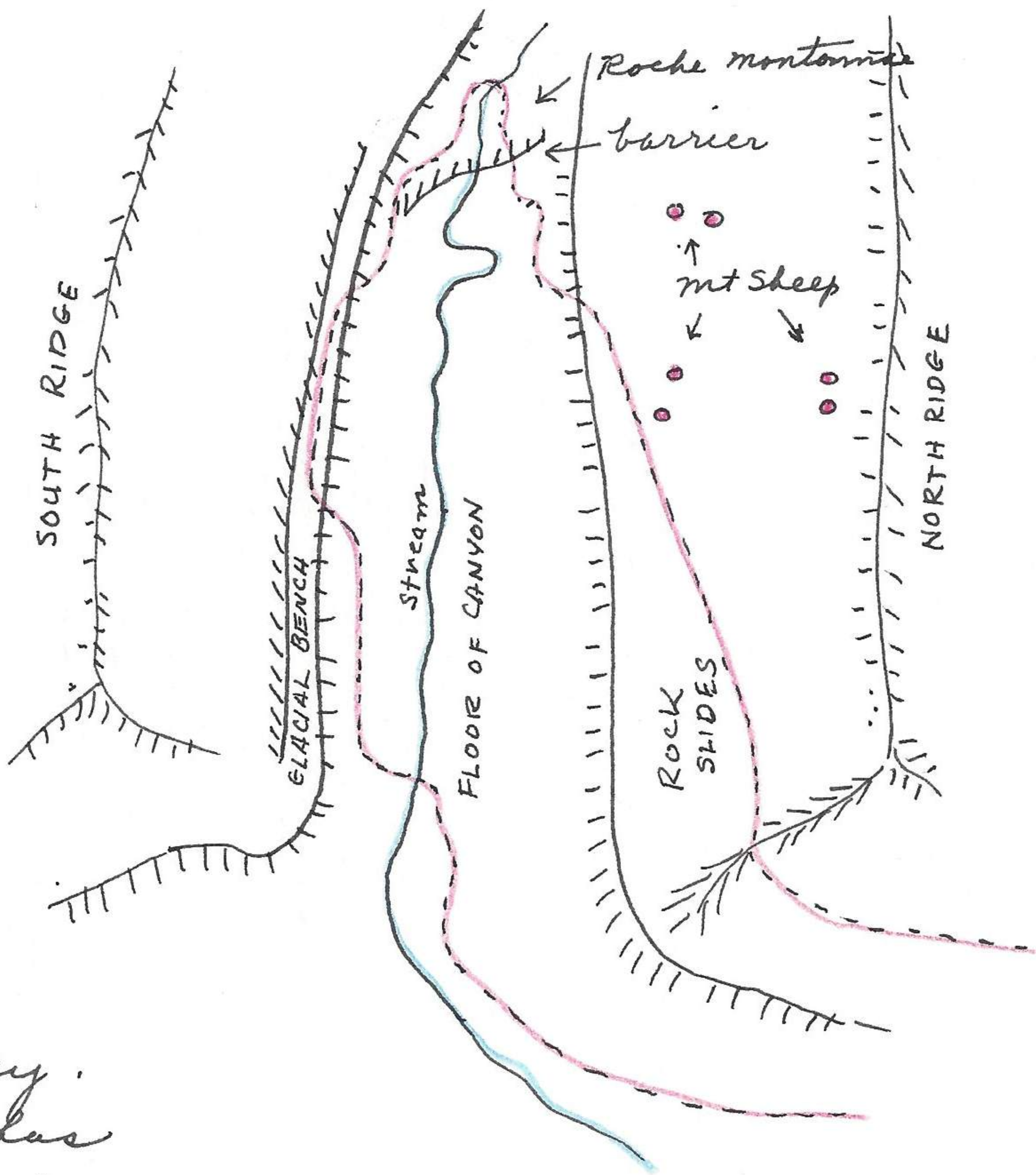


This bench (glacial) from canyon floor to rock slide above bench is completely sealed with the dominant white lichen, growing away below, in a very abrupt manner, to the grasses and sedges of the canyon floor. At places it shows a wrinkled pattern. The stream has willows on bank. Toward mouth of canyon water flows rapidly from slow moving stream above.



This might indicate recent rejuvenation of range along Chandler Lake valley.

The canyon floor has fewer caribou trails and tracks than main N5 valley of the Chandler Lake. Photo 510819-4 of 2 ♂ fall sheep fighting. The glacial bench can be plainly seen to left. It is on this benchland that I found the most ideal and undisturbed plant-animal community for small mammals. The most favorable situation on this bench was between two rock slides where the bench was relatively flat and grasses and sedges grew profusely. Caribou trails did not interfere. The area covered by clouds is over a crevice which has been formed according to structure of the rocks there: Photo 510819-5 as above but closer to mountain sheep. These animals have not as yet recognized the intruder, as they have been fighting continuously. The crevice structure is more in evidence. Photo 510819-6 of closer view of sheep. The two ♂♂ are now slowly moving up slope as I near.

