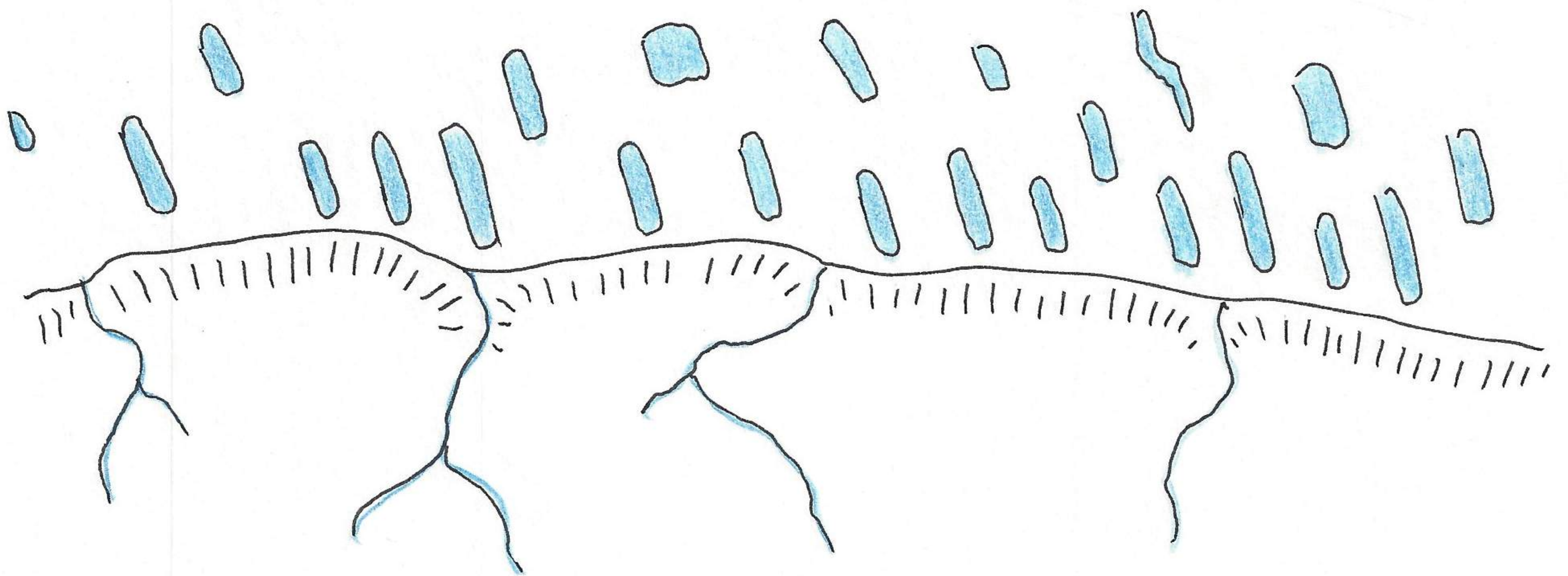
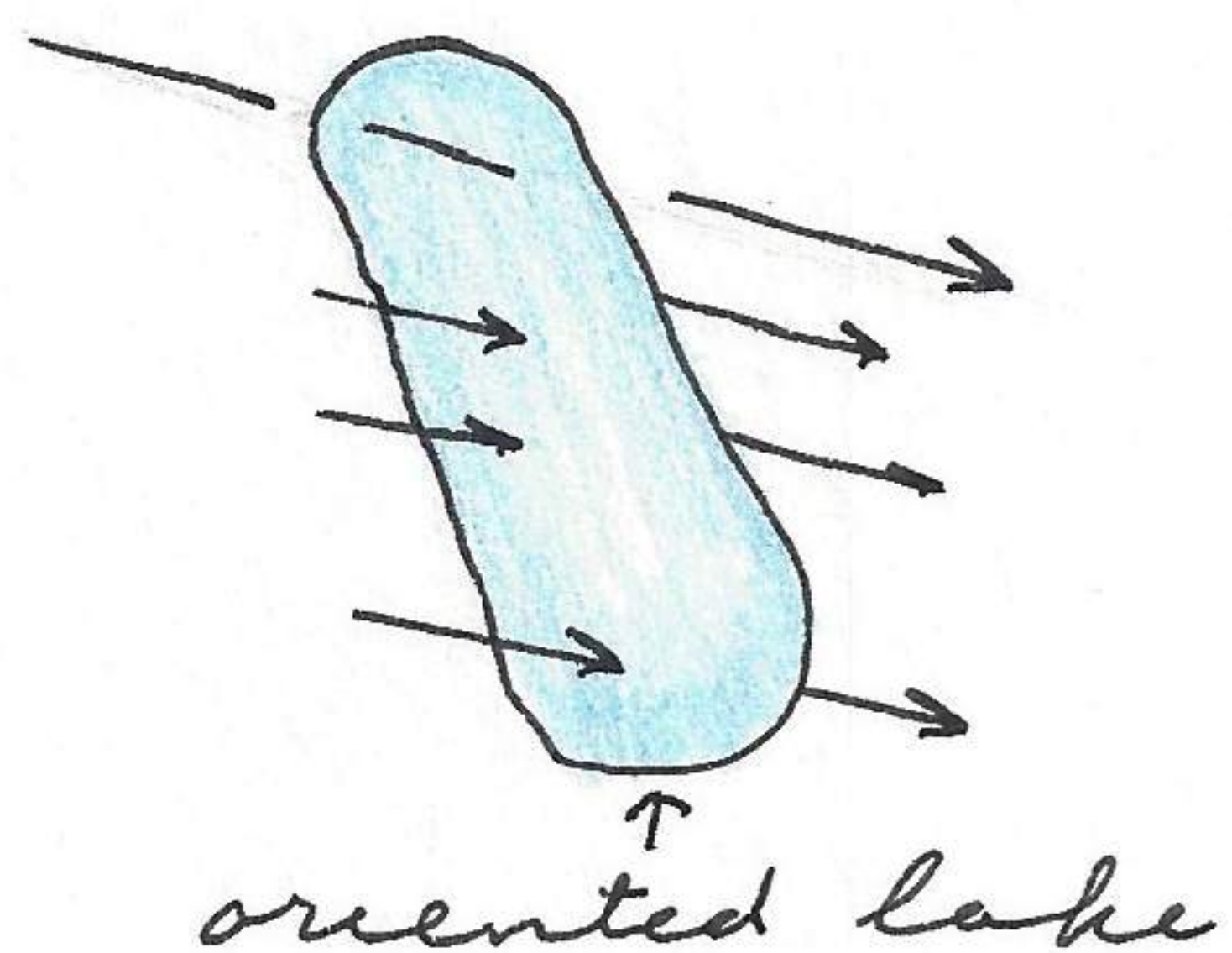


Ocean. These oriented lakes have a definite contact with the Plateau Province thus:



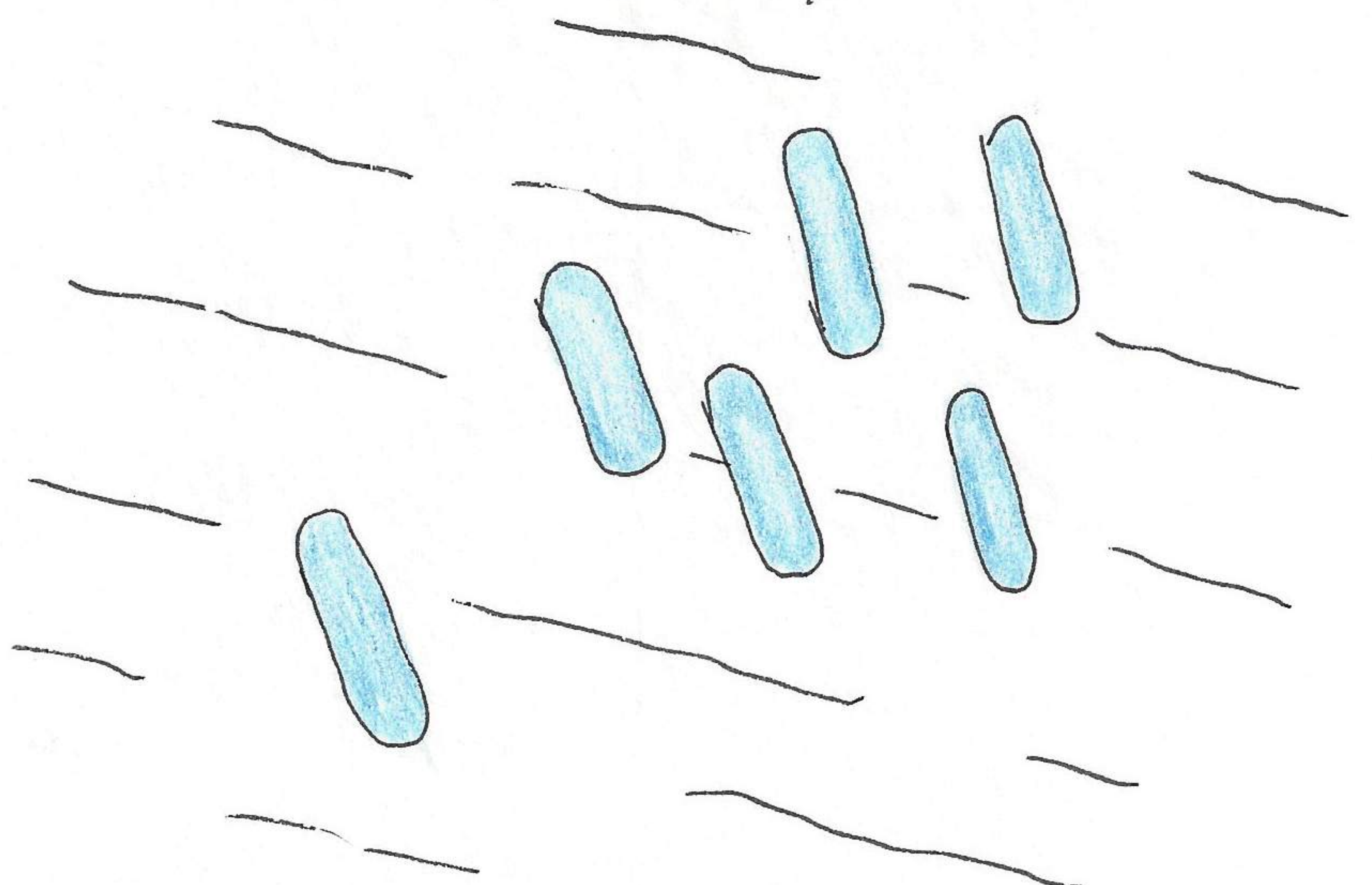
The result of wind action and direction is evident on the snow and ground surface in this area (Plateau Province and low tundra coastal plain contact) and for some distance beyond.



direction
of
winter
winds

The wind forms linear lines across the snow and especially at the edges of the lakes the wind has excavated banks and trailed debris beyond the lakes. Irregular parallel lines of greater dimensions follow the same direction as the prevailing winds.

While the general direction of prevailing winds is from the NW during the winter months, it has no effect upon the formation of oriented lakes except to erode the banks on the east and west sides of the lake.



It is the direction of the prevailing winds of summer