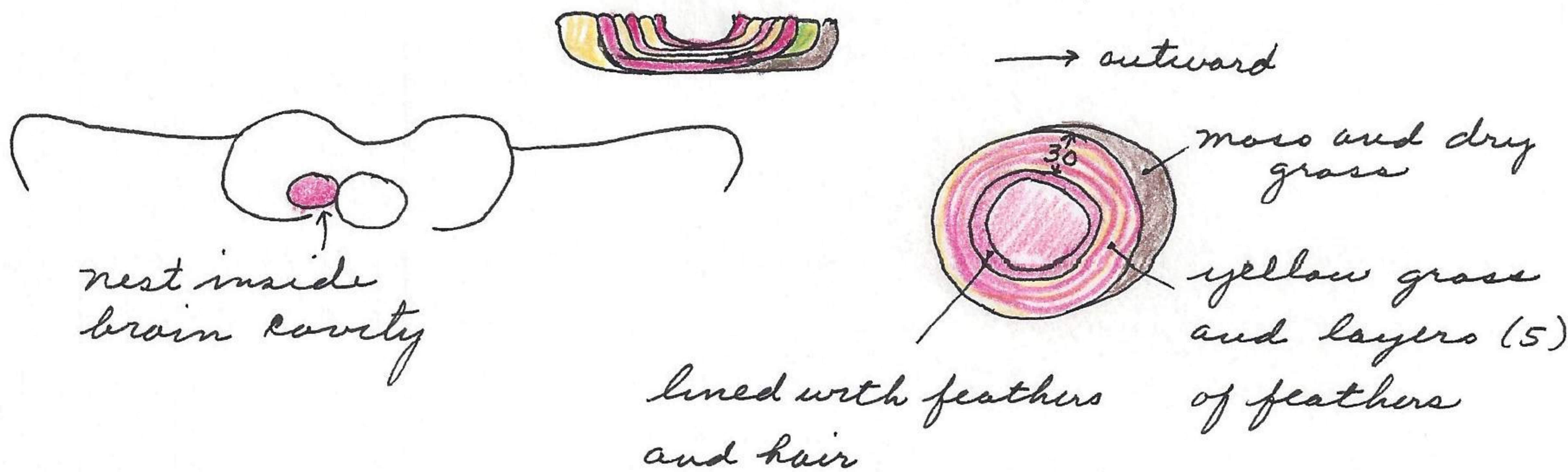


at Point Barrow, $156^{\circ}27'25''$, $71^{\circ}23'11''$, collected 5 lemmings by digging out of nesting chambers. Practically every mound supported good runways. The grasses to the south and west of the lower mounds also were supporting numerous lemmings. Would estimate about 50 lemmings in this area. 18 nests examined and were used but not inhabited. Runways beyond mounds on short grass show extent of feeding or migration but now all mammals have contracted their range to the deeper mat grass surrounding the mounds. Several skulls of Lemmus were found. Of the 5 lemmings collected all were relatively small compared to our trapping of other areas on the mainland. They were, however, pregnant and carried embryos. Due to the isolation by peninsula grovels and the rigors of the Point Barrow climate, they may actually be a small group than the mainland forms. Found 5 pairs of nesting snow buntings with sets of 5-5-5-5-5 eggs. Collected one set of 5 520621-1 from foramen magnum of Balaena mysticetus. This nest was completely protected by the



This nest built like longspur nests but with more insulation. nest measured: 155 wide, 68 high, 38 cup height, 70 cup width. Another nest of 5 fresh eggs of Plectrophenax n. nivalis from the inner protected structure of an ancient house used by Eskimos. nest on skull of Balaena mysticetus. Completely protected from sun, rain or wind.

new yellow grass stems alternating with lining of feathers

old material of last year? cup of feathers and 20 mm of fine hairlike plant fibers. Feathers from larger birds than snow bunting

nest 24 gms wt; outer nest ring 4 gms inner mass 20 gms.