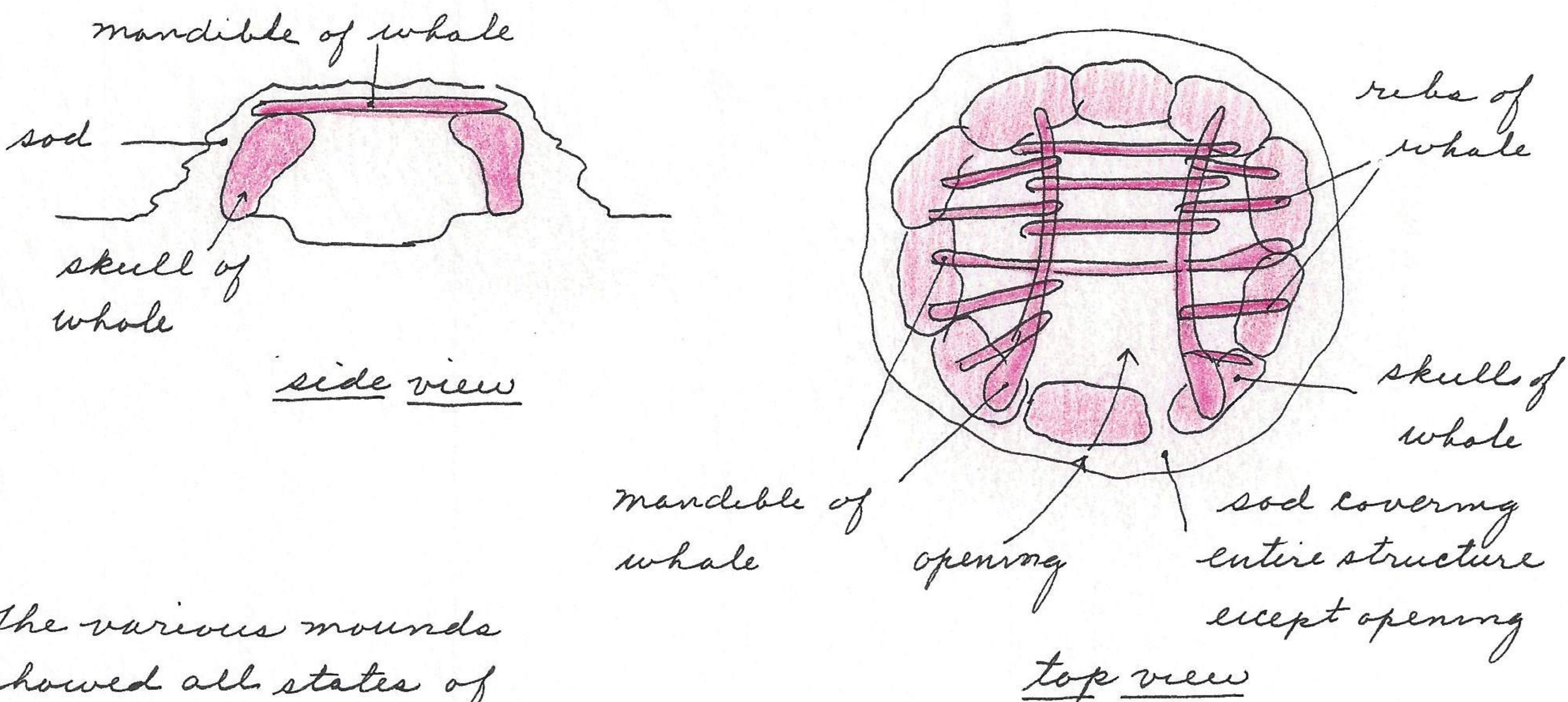
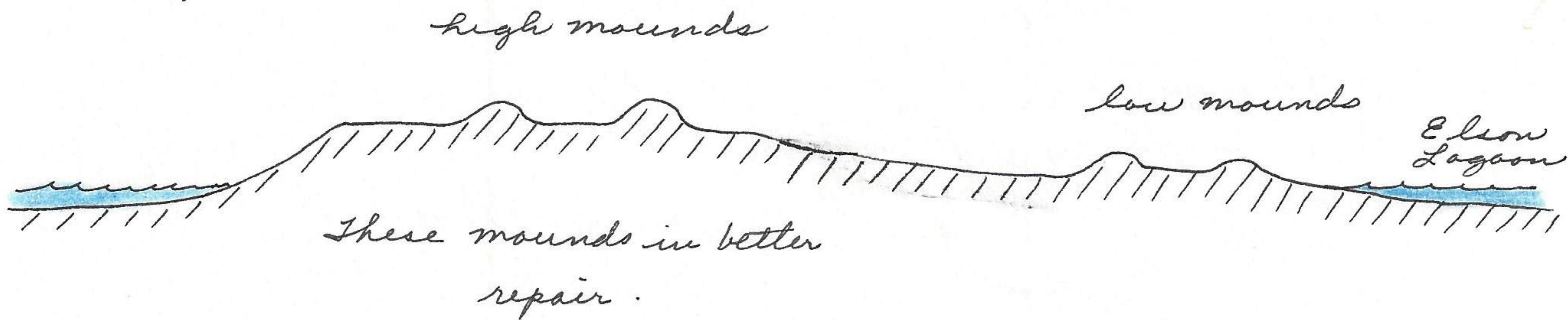


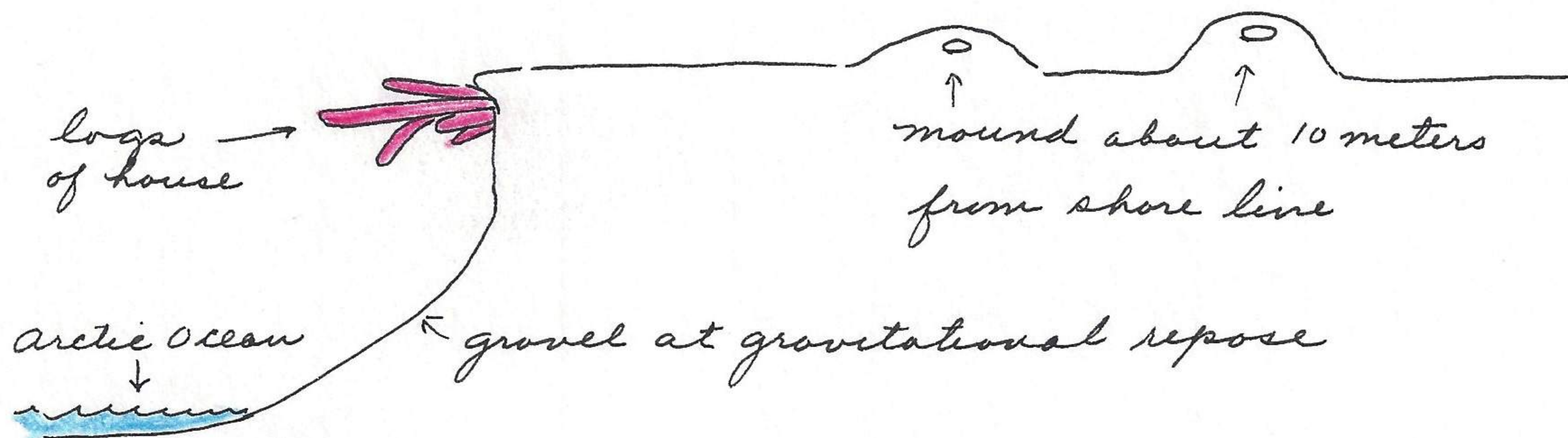
These nests are certainly well insulated from the ground and sides. Several skulls of *Balaena mysticelus* available for measurement, most of the snow huts are formed by skulls and are not accessible for measurement. The Eskimo houses, now abandoned look like this:



The various mounds showed all states of deterioration from complete units to low, almost level mounds. In many houses, the side members were logs, driven into soil and replaced *Balaena* skulls. Evidence of modern Eskimo in artifacts such as stove lids, bolts, wire etc. This area should be protected as a national monument. already considerable evidence is present of pot hunting and surface spading. From north to south the peninsula profile thus:



Along the NE crossonal ridge structures protrude thus:



The ridge is gradually being eroded away by natural causes. This