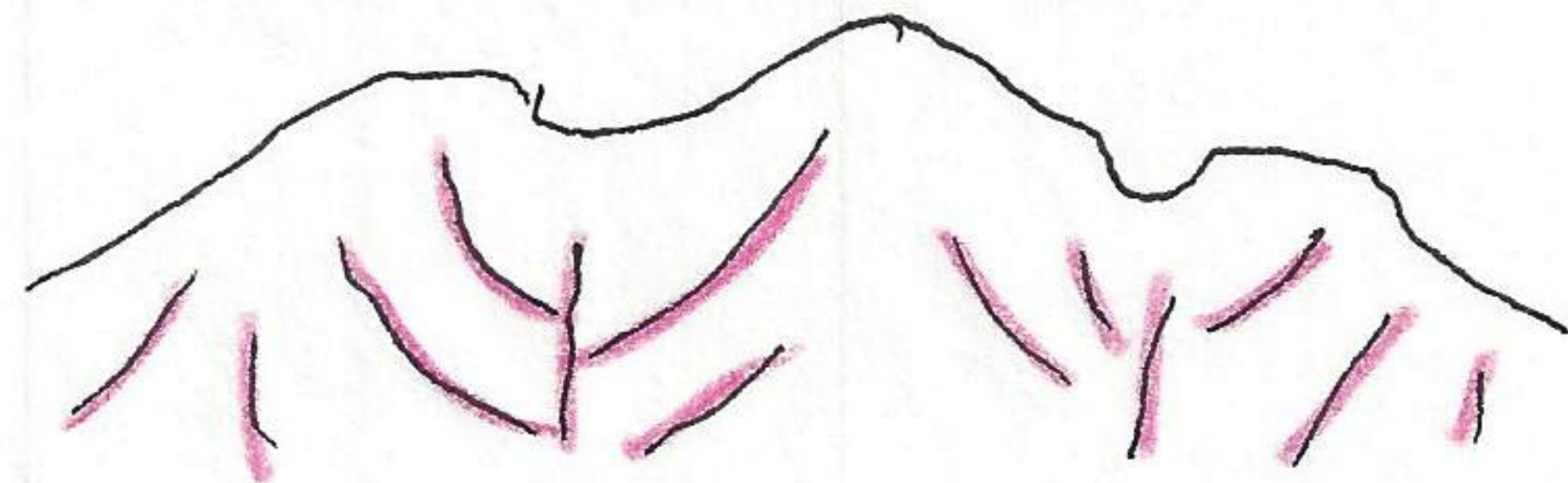
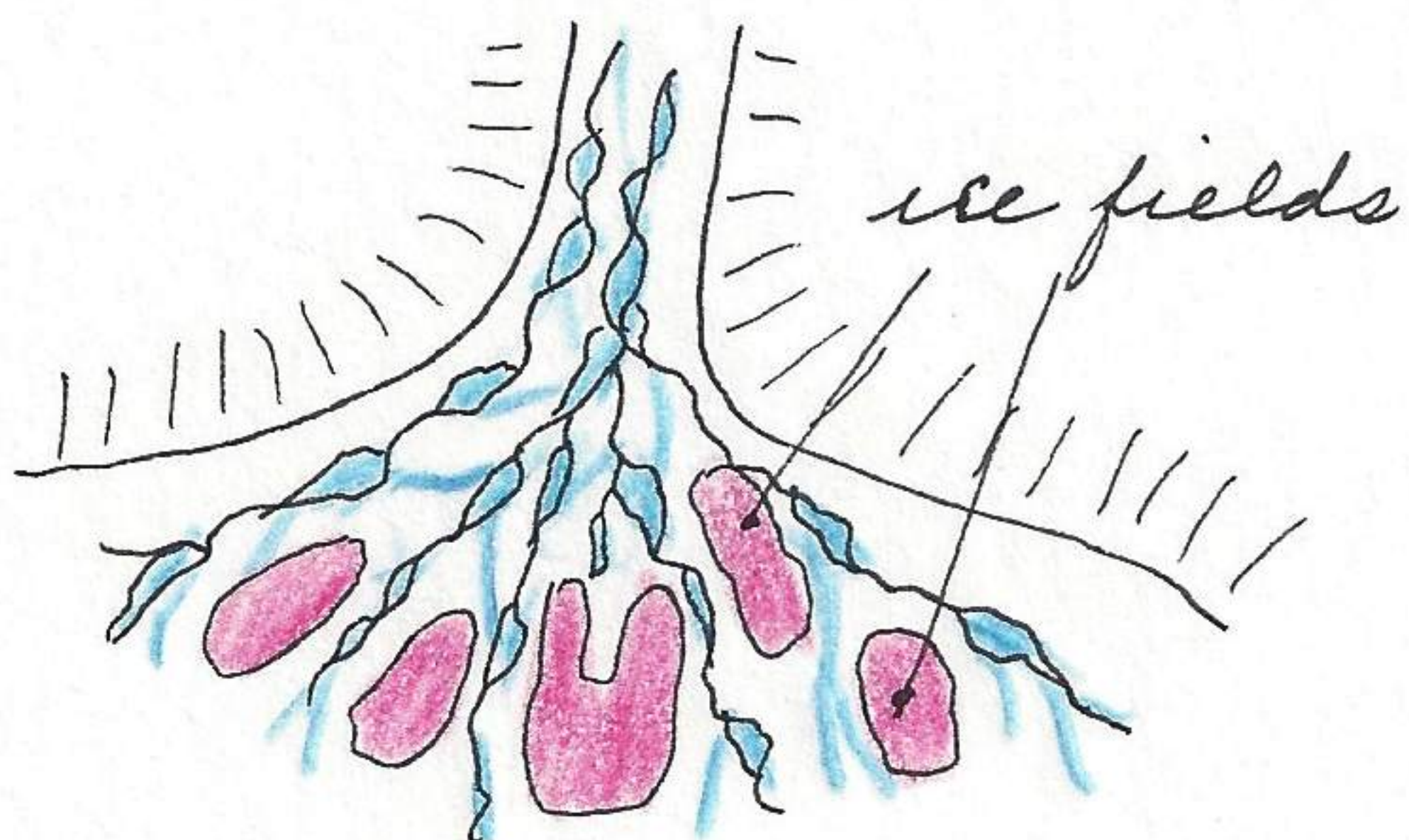


10:13 A.M. 4th large river. The Brooks Range with long streamers or streaks of snow only, except the more distant ones to the south which are snow packed. Snow filling gullies and cornices. Willow and alders getting greener as we proceed to the east. 10:20 A.M.



approaching base of mountain which begin as an abrupt front with a rolling tundra topography to the north. The contrast is great with towering mt ranges arising from the gently rolling tundra beyond. At the mouth of the canyon the rivers have deposited a broad fan of braided stream channels and ice fields with the



braided channel in white gravel outwash plain

white gravel contrasting to the bordering areas of greenish grey. There is no doubt that recent activity and erosion of the Pleistocene elevated land mass.

10:24 A.M. now over ice fields and at 10:25 A.M. at mouth of the canyon of the Sagavanvoklok (Ivashak) River.

The Ivashak is a beautiful canyon with high intricately dissected peaks

and compact form. It is an area that certainly is of national Park caliber. It compares with any canyon I have seen in the Brooks Range. The mouth of the canyon is covered with approx. 80° ice fields with superficial system of blue water in channels on top. The upper limits of the mouth of the canyon has less ice. It is certainly a marked contrast against the surrounding areas. Several of these ice fields were observed en route to Wahoo Lake. At 10:43 A.M. we passed a barren ground grizzly on left side of canyon about 4 miles out of Wahoo Lake.



It was running up the slope when first observed. It weighed approx 750 lbs.

Arrived Wahoo Lake 10:45 A.M. This lake was named today by Bill Brogse, U.S.G.S. who arrived yesterday.

This lake has never been on maps and was discovered by aerial maps last summer. It is named for Wahoo, Nebraska where the wife of one of his friends lives. Wahoo Lake camp is located at $69^{\circ}08'$, $146^{\circ}58'$, 2350 ft. A barren ground grizzly was observed by Brogse at $69^{\circ}11'$, $146^{\circ}55'$ yesterday. The lake is 5025 feet long