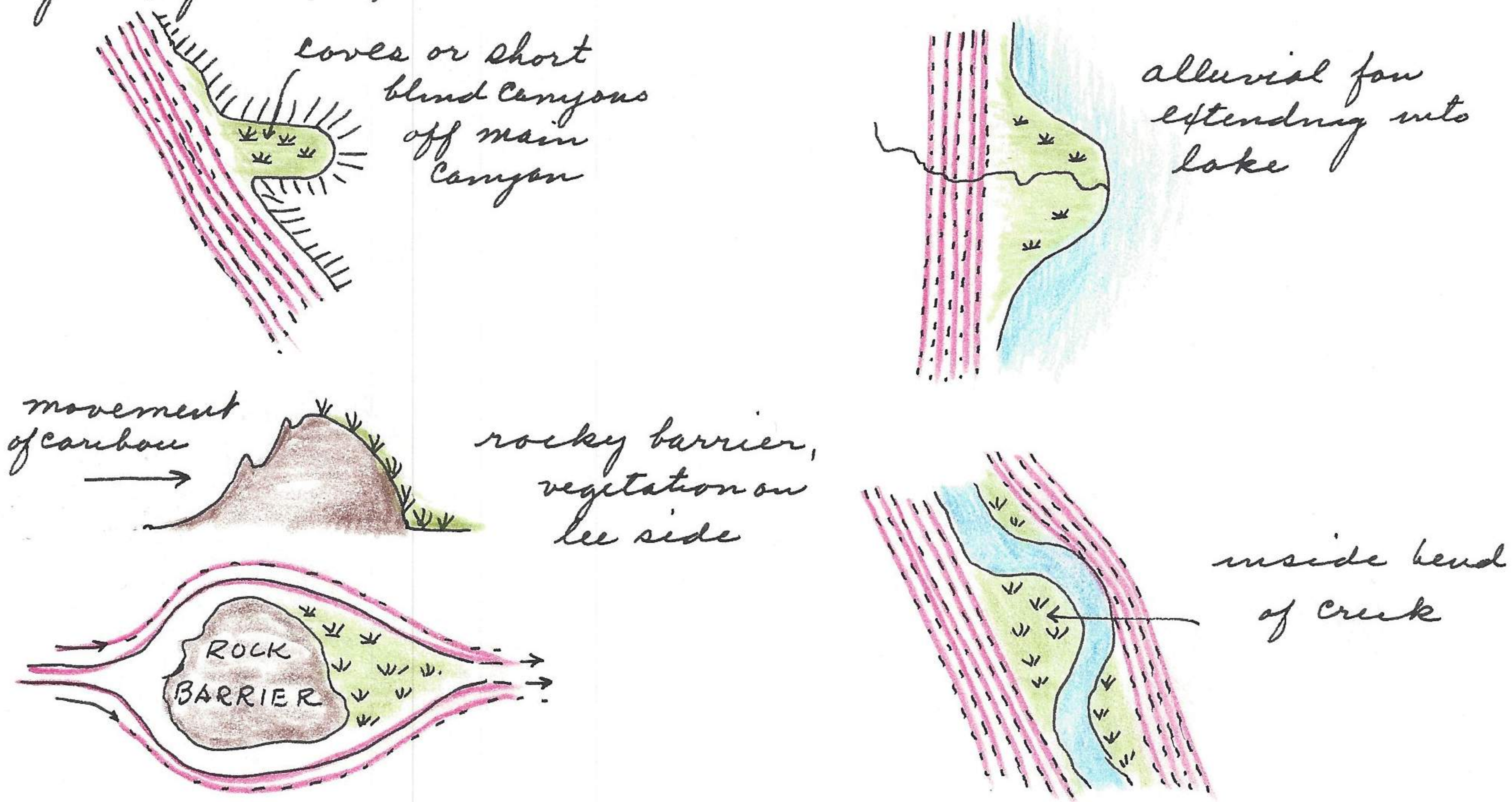
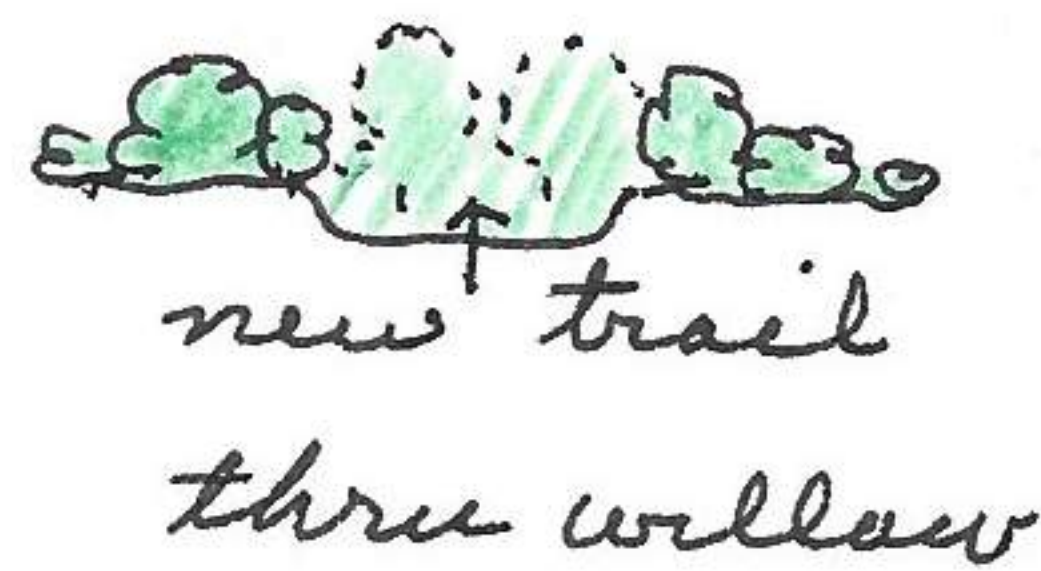
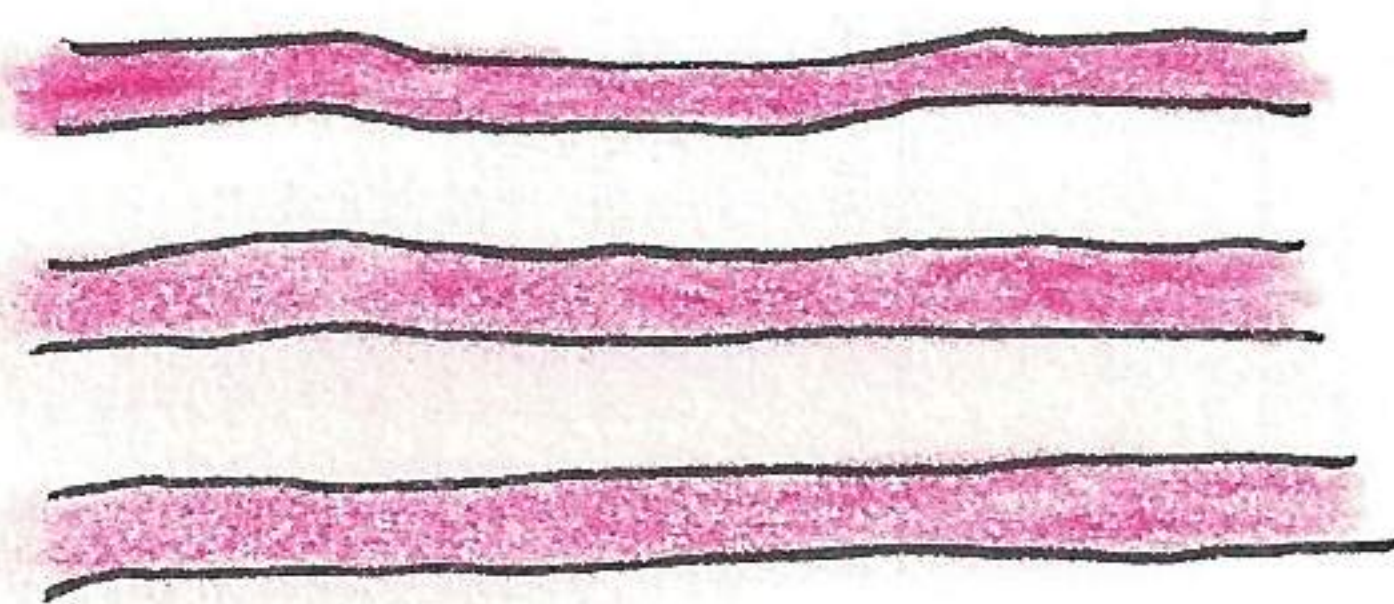


upon arrival at this lake saw 2 golden eagles soaring on upper 4/5 slope mount mary and in twenty minutes later at base of same mountain. These eagles were noted on two other occasions, first high on mountain and then on lower slopes. Eight pectoral sandpepers on shoreline in front of camp. Caribou have completely utilized canyon floor. Areas not in direct line of march not effected except by an occasional resident caribou or one which might have wandered from the herd. Such refugia from caribou trampling are, for example:



Wet marsh areas completely trampled to mud or all grass lying in one direction and mixed with mud. Areas on slopes originally in grasses and sedges now without signs of vegetation and mud knee deep. Mud carried onto rock slopes in direction of movement of caribou. Gravel and rocks in dry river bottoms smoothed and of different color. Trails crossing established rock slides sealed with lichens and mosses now show original yellowish colored rocks with all black lichens removed. These trails can be seen at a distant as lighter than surrounding rocks. Trails are directional and if a willow patch is in the direction of movement it is trampled to bare ground.

There is a tendency to form parallel trails of about 1 1/2 foot spacing. Converging of trails completely trampled by the hooves of caribou which overlap one another. From camp to moraine (600 feet corridor) there is not



new trail thru willow