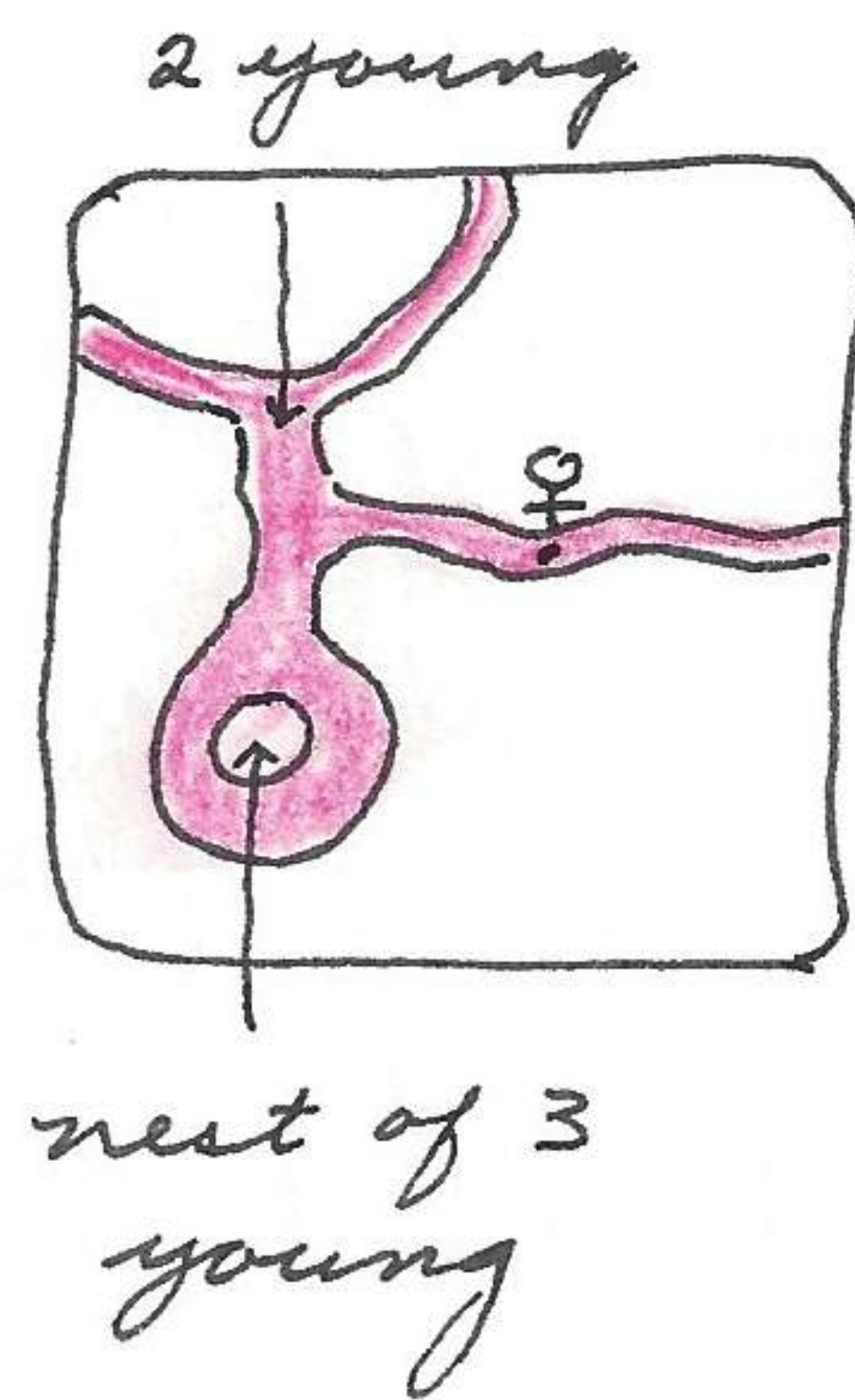


jaegers, 8 Steller eider, 1 loon, 1 Lapland longspur, 7 glaucous gulls, 5 snow buntings, no red phalarope except at edge of ocean + fresh water lakes, were observed. Lemmus are active during snow storms as well as clear weather. Tracks and feces in runways lined with the new snow. Water in trails now ice upon which the Lemmus still navigates. Small ponds and water on tundra now ice and has been for last 2 days. Medium sized lakes partially open. Largest lakes free of ice.

Arctic Research Lab., Point Barrow, Alaska

Sept. 8, 1952

The two Lemmus captured alive yesterday on trip south of ARL are now doing well and feeding on lettuce. This A.M. at 11:30 one died. The remaining Lemmus thriving on lettuce, apple and Arctophila. This A.M. checked area 2 blocks S of ARL and found under an upturned Coca-Cola box one ♀ and 5 dead young. ^{Two of the young were} 2 inches apart eight inches from the nest in runway, one of the two had a puncture through throat and had been bleeding. Nest material 2 1/2 inches of insulation with top opened to bottom of box. The young were approx. 7 days old. Nos 520908-5 to 520908-9



The female no. 520908-4. Four other groups of young (4-4-6-5) about 7-10 days old were also found dead and cold in nest. They could not have died over 4 or 5 days ago, most of them appears to be only a day or so. A male Lemmus 520908-1 swam in cold water of lake for 7 1/2 minutes before drowning. Fur not soaked above. A ♀ Lemmus 520908-2 ran for 1 hour and 20 minutes with only short pauses until discouraged on. At the end of 1 hour and 20 minutes it refused to move except when forced and then only to adjust itself. This animal was placed on ^{an} ice water pond to saturate fur for about 15 seconds and then placed on snow. It moved about 12 feet and then died in 8 minutes. When this Lemmus was in running experiments had a tendency to run in a straight line direction regardless of attempt to herd it in any other direction. Another Lemmus was released from on point 10 times and in each case ran in the same direction. A female Lemmus 520908-3 was placed in water