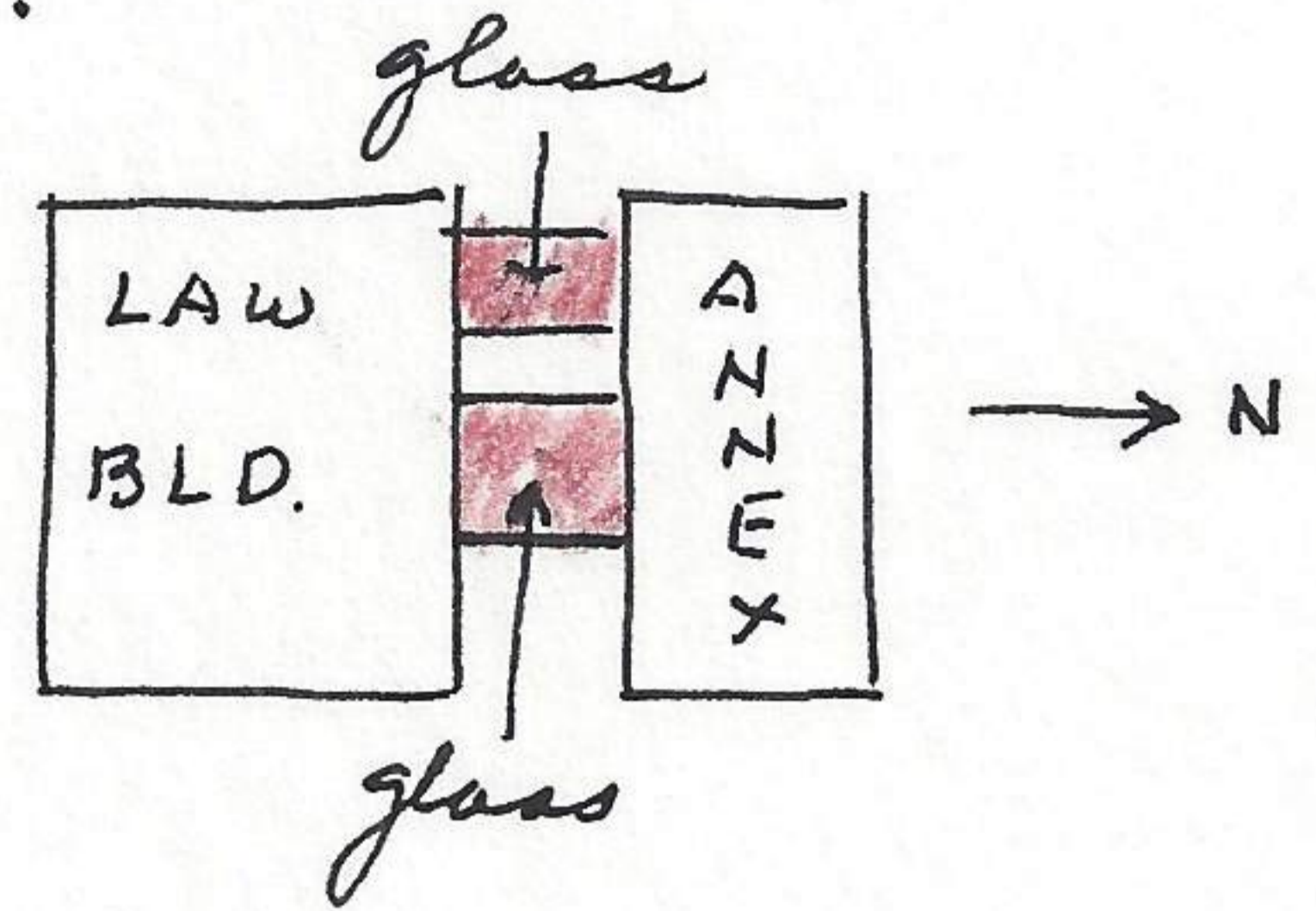



University of Kansas Campus (Annex to Law Building), Lawrence,
Douglas County, Kansas.

Aug. 5, 1953

Record following of birds killed by flying into glass lined corridors between the old Law Building and the new Annex which is built to the north. These corridors (2) are about 15' wide and connect the second and third story floors. They are lined with glass on each side and when clean are apparently invisible to the birds as they fly between the two buildings. The listing is compile under the Aug. 5 date and do not occur at regular date in journal.



- | | |
|----------------|---|
| August 5, 1953 | <i>Passer domesticus</i> . |
| " 8, 1953 | <i>Turdus migratorius</i> |
| " 15, 1953 | " " |
| " 21, 1953 | <i>Passer domesticus</i> |
| " 28, " | <i>Turdus migratorius</i> |
| " 29, " | <i>Passer domesticus</i> |
| Sept. 4, " | <i>Turdus migratorius</i> |
| " 9, " | <i>Zenaidura macroura</i> |
| " 14, " | <i>Turdus migratorius</i> |
| " 18, " | " " |
| " 23, " | " " |
| " 25, " | " " |
| " 26, " | " " |
| " 28, " | <i>Zenaidura macroura</i> |
| Oct. 3, " | <i>Dendroica castanea</i> (Reported in K.O.S. Bulletin
in by Edna Ruth. "Oct 3. Bee, James
W. One of this species was found dead
on the campus of the University of Kansas.
The skin is in the museum of Natural
History at K.U. Specimen no. 31234. Sex
not reported... The fall record sent in
by James W Bee is the first autumnal
record obtained for the State of Kansas") |
| Oct. 5, 1953 | <i>Passer domesticus</i> (a ♂ and ♀) |
| " 6, 1953 | Imprints of domestic pigeon on glass  and
one wing on ground. |
| Oct 8, 1953 | <i>Turdus migratorius</i> (adult) no 531008-1, prepared. |
| " 10, 1953 | " " (subadult) |