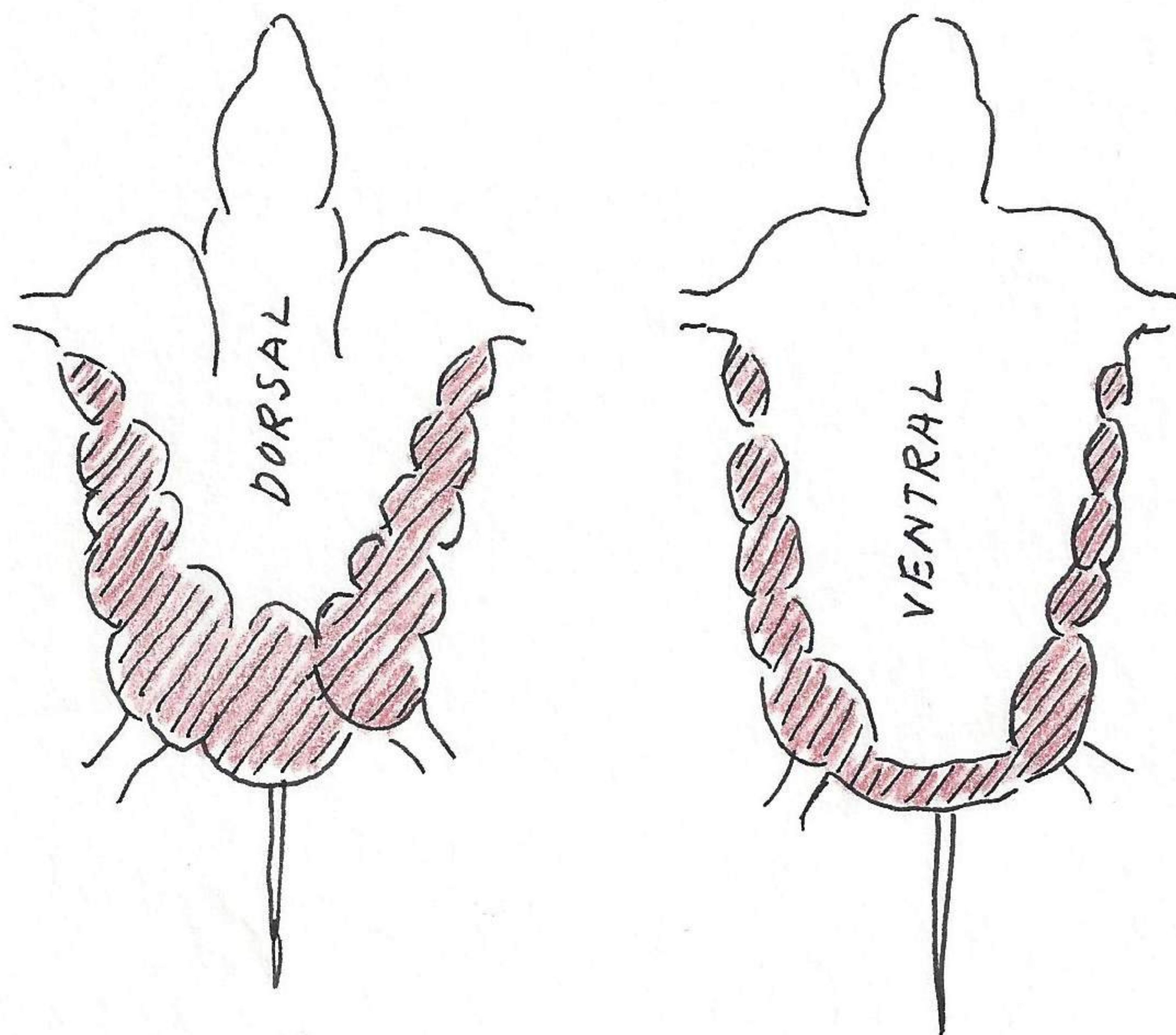


the stadium this year and that the number is only a small fraction of the number that roost there during the summer.



Distribution of fat on the dorsal and ventral part of the body of Epterus fuscus

Wakarusa River south Haskell Institution, Lawrence, Douglas Co., Kansas

Dec. 26, 1953

Collected a specimen of pelecypod, Lasemigona complanata no. 531226-1 which measured 125×185 mm. The Wakarusa at this time of year is entirely frozen and without visible water. The stream is intermittent and the areas between the ponds are supporting many of these pelecypods which have presumably died from lack of water or frozen. When walking upon the frozen ponds the edges of the ponds (parts of isolated stream) show movement which would indicate that the fish are receiving oxygen; other ponds are tightly sealed by ice. It would be an interesting problem to determine the mortality of fish under the ice.

1/2 mi. S Haskell Stadium, Lawrence, Douglas Co., Kansas

Dec. 30, 1953

Ave Asio f. flammeus hunting the cattle pastures south of Haskell Institution. Annette C., James R. and myself walked on the frozen ice of the Wakarusa River from the east boundary of the Reservation to the west boundary (1 mile by straight line). The water was completely frozen and the ice 7 or 8 inches thick. Fish were observed under the ice and above. Usual birds