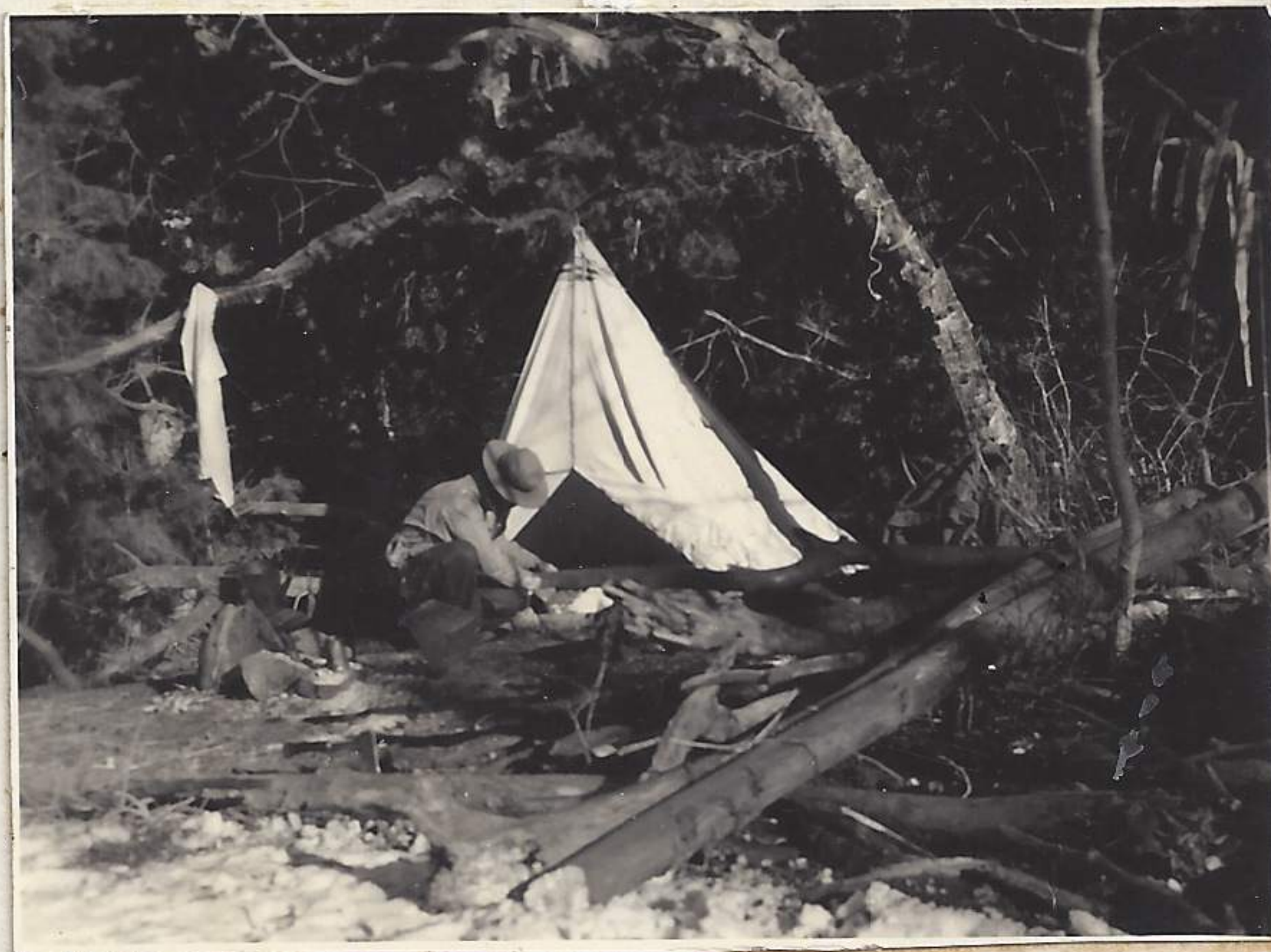


4/24/37

Sidney Boyle and I made two day trip up Grove Canyon on the west exposure of mt. Timpanogas. Camped at the head of the Grove Canyon in conifers. These conifers are situated at the point where the broad valley converges into the steep and narrow canyon of Grove Creek. Next day we visited the eagle nest on the south rim of Grove and then retraced to camp and from there traversed the broad valley to the divide of American Fork Canyon, hence west to top of the valley bordering ridge and hence south to high north rim of Grove and then dropped down into head of Grove at camp & then packed and returned to Pleasant Grove. The deer & coyote tracks trended east-west across the broad valley. Made pictorial record only.



1-4-24-37 - From north-east rim of Grove Canyon shooting north across the broad upper Grove drainage. We were able to walk upon the crusted surface of the snow without much trouble. Our trip took us up the right side of picture to divide and then west along divide to valley or secondary ridge.

2-4-24-37 Sid at Camp preparing breakfast.

pictures (1-4-25-37) and (2-4-25-37) constitute a panoramic view of the north side of American Fork Canyon taken from the divide of American Fork and Grove Creek Canyon. Sid as subject.



1-4-25-37

2-4-25-37