

1 1/2 mi. S and 3 mi. W Lawrence (P.O.), 601226-54  
 Dec 26, 1960 Douglas Co., Kansas

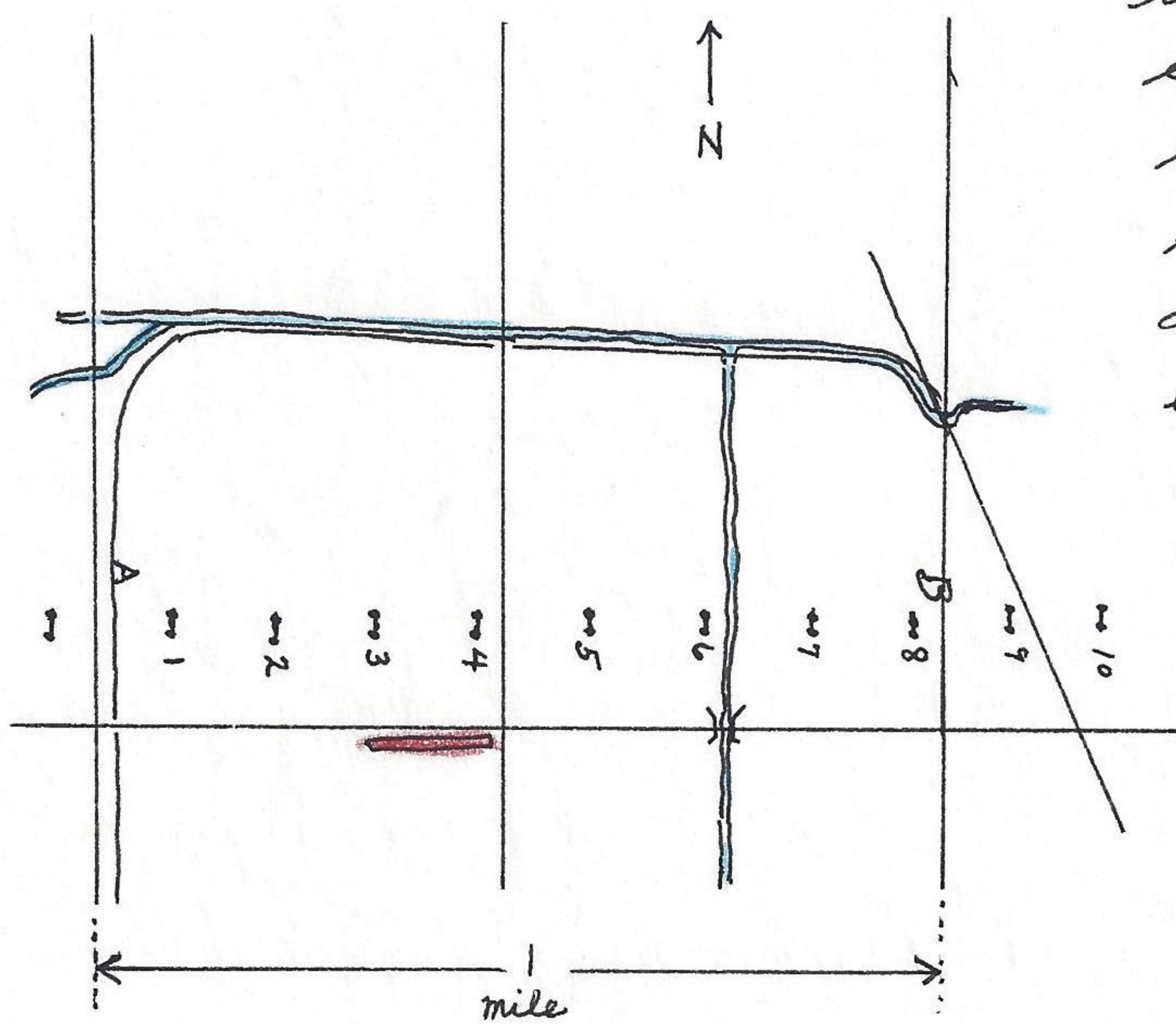
noted one mirus polyglottus. It flew to top of fence post and then to ground and then return to top of fence post.

Haskell Bottoms, 3 mi. S Lawrence (P.O.), Douglas Co., Kansas  
 Dec 26, 1960

After cruising in outskirts of Lawrence for 1 1/2 hrs. noted only one hawk, a Circus cyaneus. It was flying over the bottom-lands.

3 1/2 mi. S Lawrence (P.O.), Douglas Co., Kansas.  
 Dec 28, 1960

made census of microtus ochrogaster - Sigmodon hispidus population in Haskell bottoms (See notes of )  
 Counted number of used runways on a line A to B along



the utility lines that traverse the bottoms from east to west. (line along south pole of the 2 pole line.) Started from road to west and finish 1 mile east at edge of road. The cattle, some 150 had grazed the area this autumn but had not inflicted the severe damage of overgrazing and trampling of the previous year. I would estimate that the grazing was about one half the damage of the

previous year. Day calm but cold and overcast.

From west road to poles no. 1: noted 2 used trails, probably of m. ochrogaster, in an area that has always been the most productive area.

From number 1 to number 2 pole: one microtus ochrogaster trail, deep and concealed overhead, in old drainage depression.

From number 2 to number 3 pole: 2 microtus ochrogaster trails + used.

From number 3 to number 4 pole: no trails (center road 20' beyond)

From number 4 to number 5 pole: 1 microtus ochrogaster trail. Stalks of old sunflower type weed 6' to 8' high and very little ground