

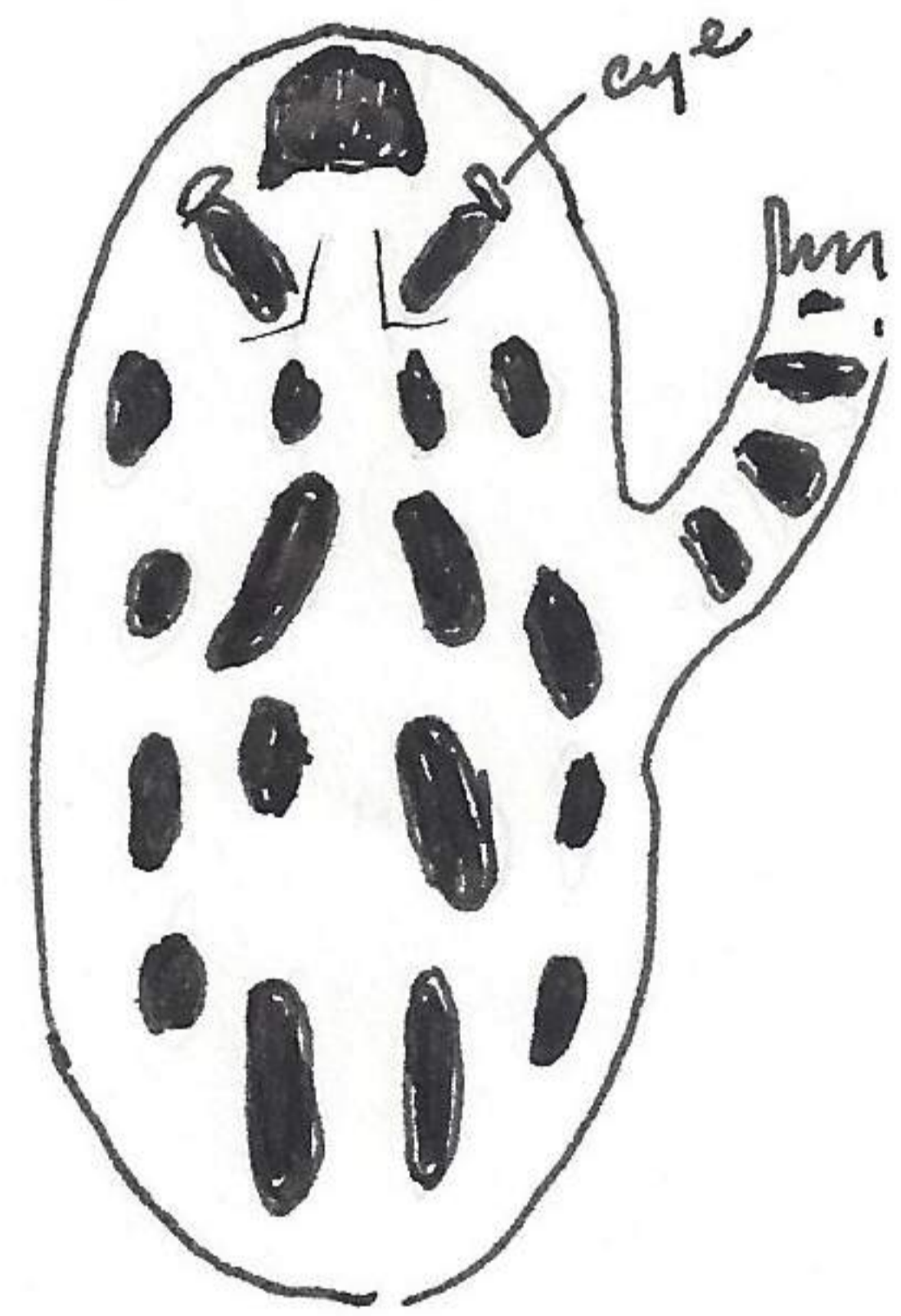
3<sup>3</sup>/<sub>10</sub> mi. E and 8<sup>1</sup>/<sub>10</sub> mi. N Lawrence (P.O.), Douglas Co., Kansas

April 29, 1962

Collected the following from area of pond and from timber along mud Creek about a <sup>1</sup>/<sub>10</sub> mi. East of the pond. This area is bordered by extensive alluviated field of river bottoms:

620429-1	Bronze grackle	320 mm T.L.,	134 gms	♂
620429-2	Lincoln sparrow	139 "	14 "	♂
620429-3	Savanna sparrow	138 "	20 "	♂
620429-4	Downy woodpecker	162 "	32 "	♀
620429-5	Warbling vireo	138 "	11 "	♂
620429-6	Orange-crowned warbler	115 "	9 "	♀
620429-7	Baltimore Oriole	191 "	34 "	♂
620429-8	Dickcissel	175 "	30 "	♂
620429-9	Horned lark	180 "	33 "	♀
620429-10	White Crowned Sparrow	179 "	34 "	♂
620429-11	Pilot black snake	1140 mm body length,	232 tail length	
620429-12	Thamnophis	420 mm body length,	108 tail length	
620429-13	Bufo <sup>Cognatus</sup> <del>compactus</del>	45 mm total length		

This toad was taken from the stomach of the Thamnophis above. The hind feet and parts of the legs were eaten. The snake was resting on top of a tree stump 2 feet above the ground with area of toad on uppermost part of stump and head lowered. It appeared as if it was taking advantage of the sun's rays for digestion purposes.



Toad eaten front end first. The time collected was 11:45 A.M.  
 620429-14 Scaphiopus From under rock on old R.R. grade.

The downy woodpecker 620429-4 was one of two in process of copulation. One little green heron on mud Creek. The blue jays in the city of Lawrence, have for the last week and a half, been traveling in groups of 2-6 and calling continuously. I believe they are organized for hunting eggs and small birds. The same kind of hunting organization is also taking place in areas removed from the city. There is a definite correlation between arrival of small birds from the south and the appearance of leaves on the trees which has occurred in the last week.