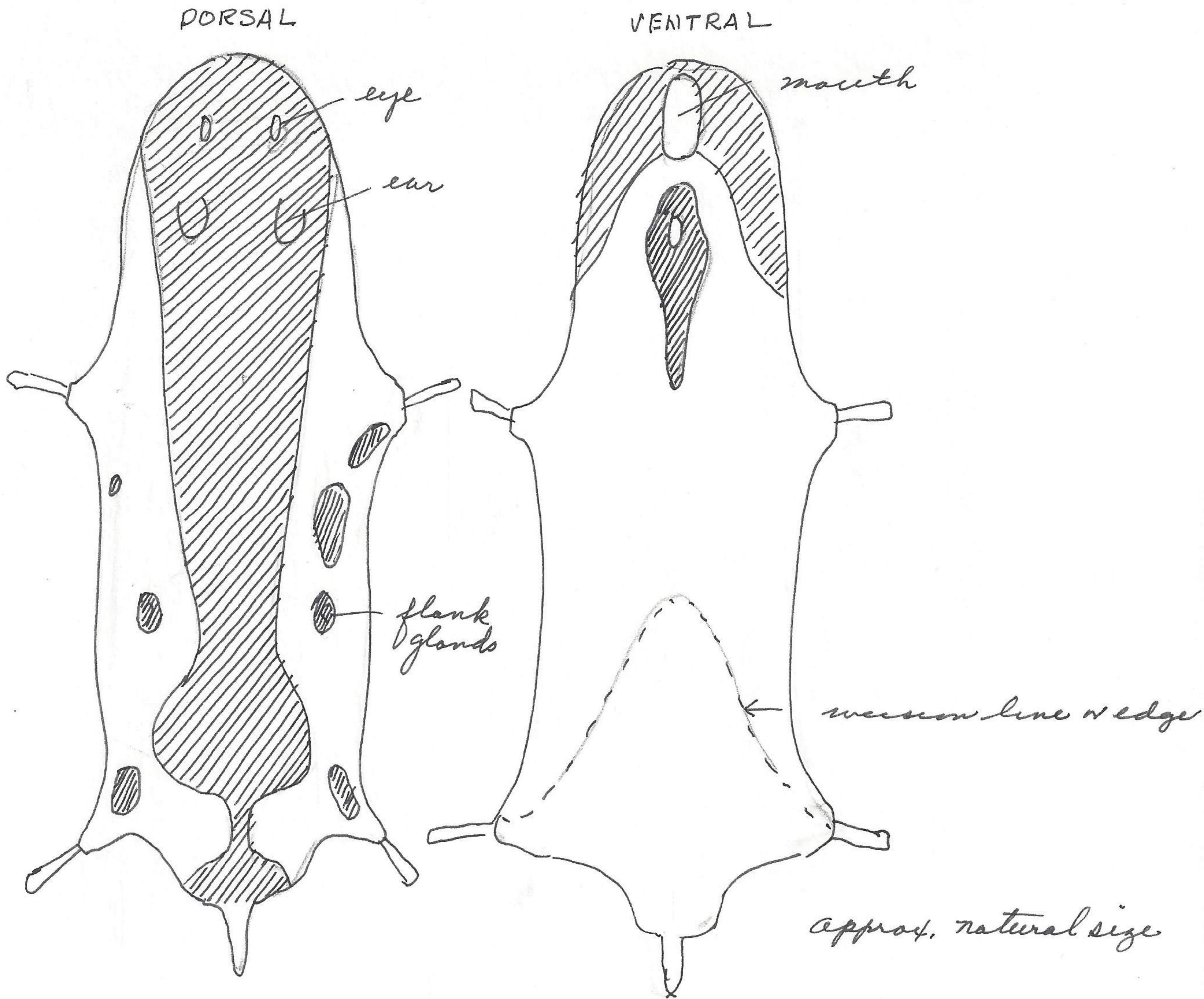
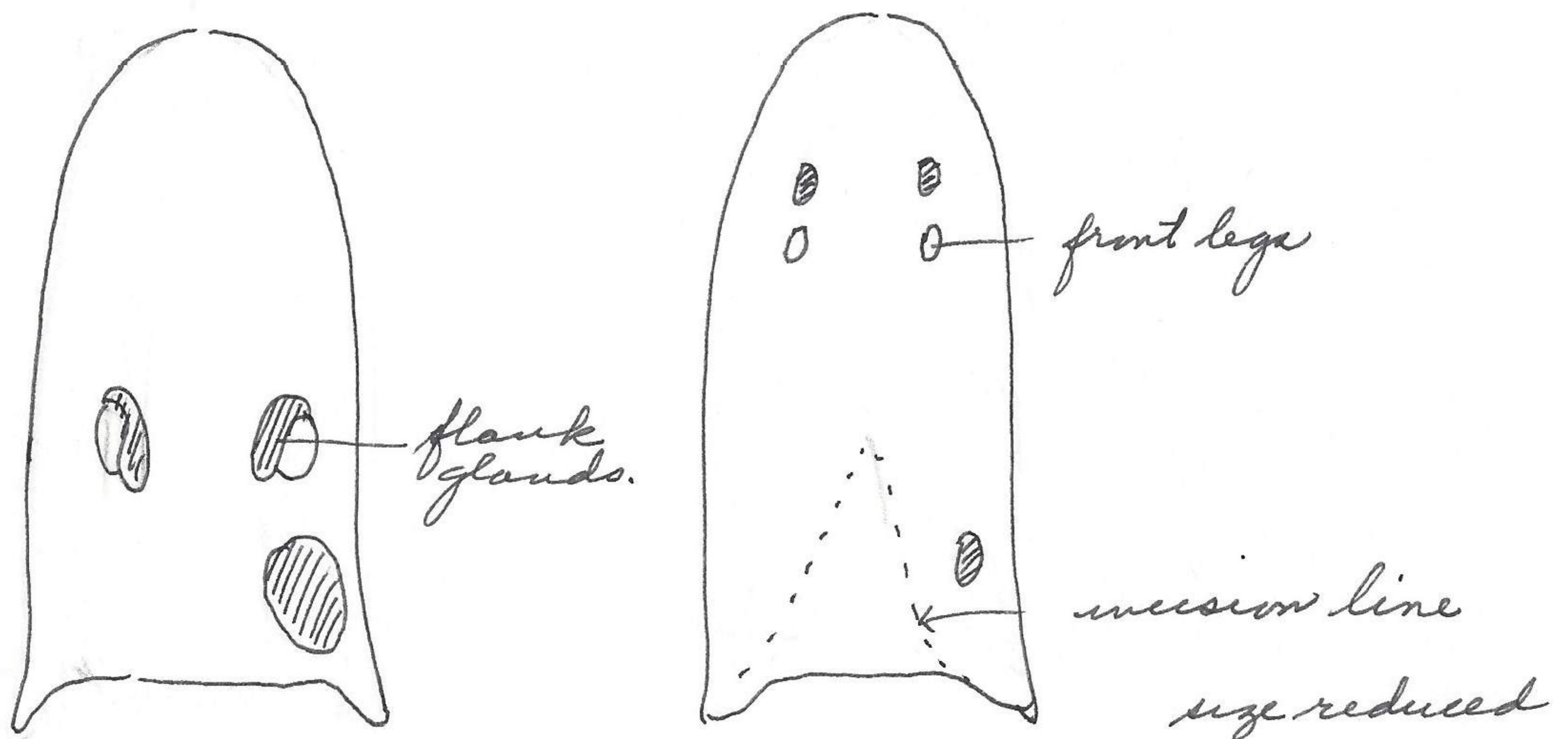


Jan. 6, 1963

630106-10



Specimen 630106-10 (*Synaptornis*) showing pelage (inside) advancement of molt. Hatched areas black and presumably wearing hair.



Specimen 630106-14 (*Synaptornis*) showing molting areas in black.
 Specimen 630106-52 (*Synaptornis*) without pelage change.
 Specimen 630106-17 had a coiled absorption structure in area of cecum, large & small intestine similar to Lemmus of the Arctic.