

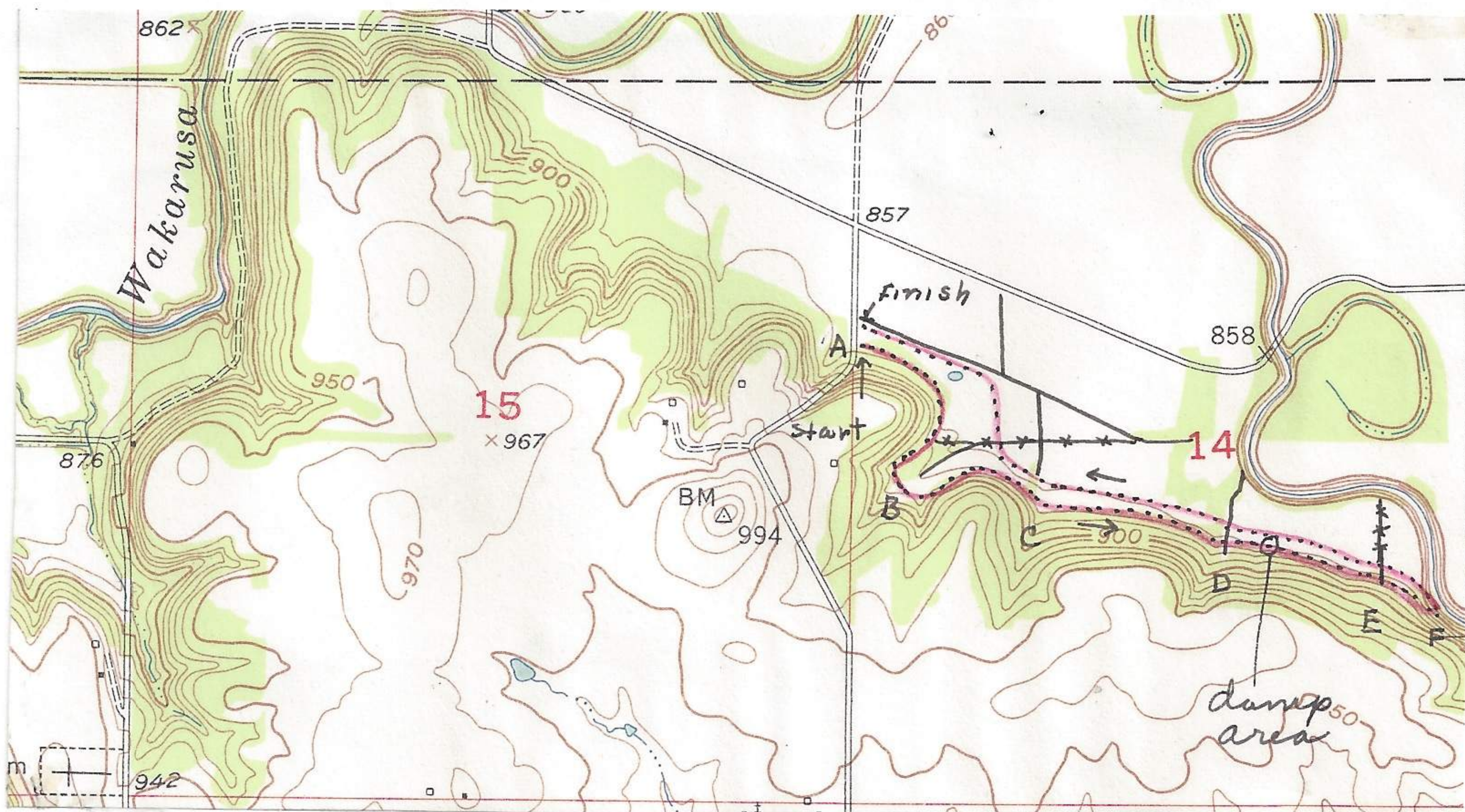
3850 feet

1/4 mi. N and 200 ft. E Clinton, Douglas Co., Kansas

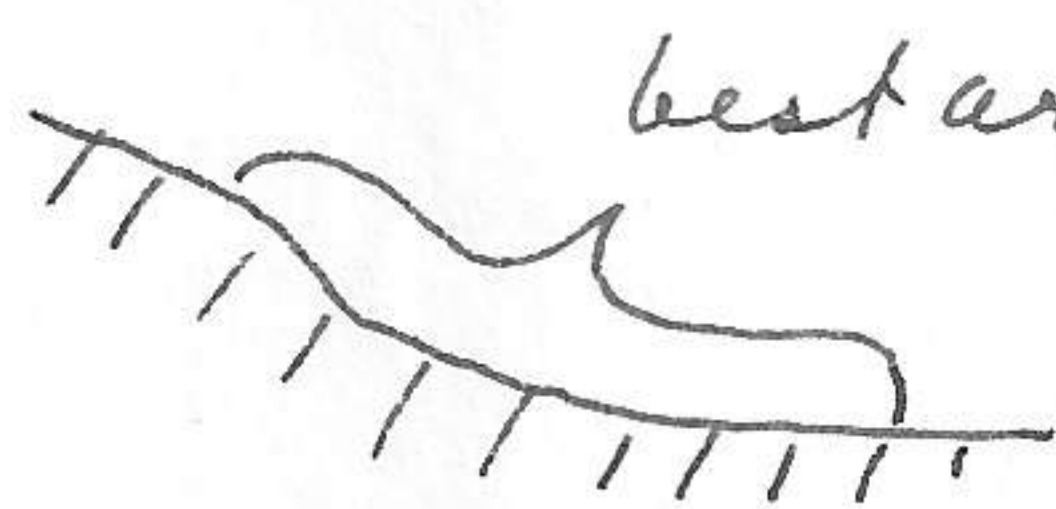
Feb. 10, 1963

made census and checked possible microtine activity along the contact between the valley and the sidehill. Between A and B deciduous trees on hill to base, some advancing onto the wet meadows of sedges and grasses on flat part of valley beyond base. Some small passerines in meadows. 2 chickadees in forest. 1 meadowlark in field to the N.

Between B-C slope cleared of deciduous trees occupied by high weeds sparsely spaced and solid mat grass of fine, delicate green grasses. microtine trails (mainly *M. ochrogaster*) conspicuous and almost continuous. many trails deeply-set and under mat grass. Trails on all slopes but mainly on brink of



hill and below.  
no birds observed.



no foxtail grasses and

Between C-D Field of foxtail grasses and some high weeds. Only runways on upper slope of field nearest hill and then only 1 per 60 feet. no birds in field except one song sparrow but a flock of small birds in deciduous forest including 3 titmice, 8 juncos, chickadees, Kinglets, 2 cardinals and 2 blue-jays. 2 crows in field to N.

Between D-E. old cultivated field (soft soils) with high weeds and a few patches of foxtails. Only trails of microtines at upper slopes near forest contact every 30 or so feet. These fields have drainage channels for directing hillside runoff water around fields.

Between E-F. Field of consocias of foxtail grasses and cleared slopes above. no birds and only 2 microtine trails. From this point where Wakarusa contact hillslope return to car as indicated.