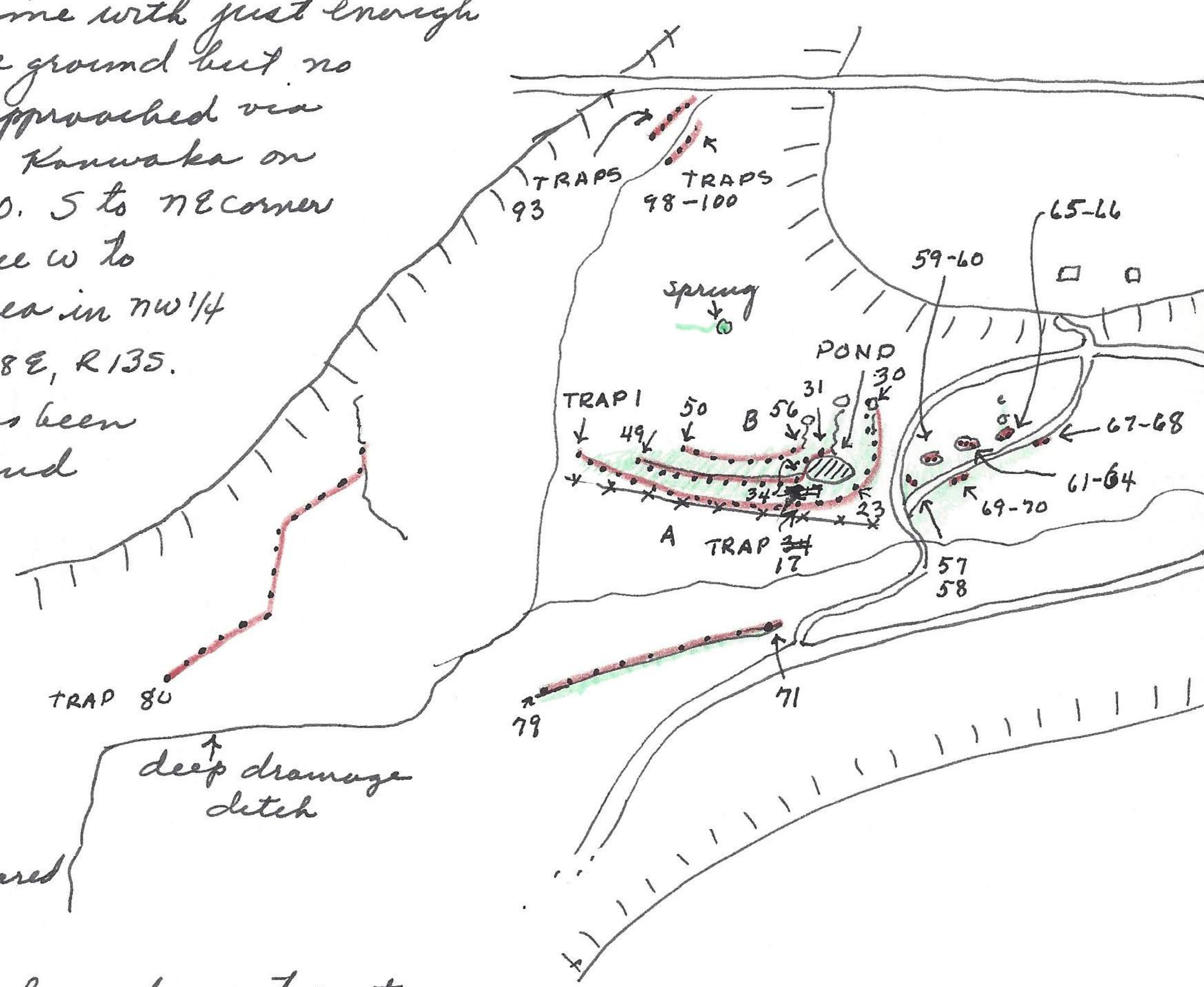


2 mi. N and 1/4 mi. E Clinton, Douglas Co., Kansas

March 8, 1963

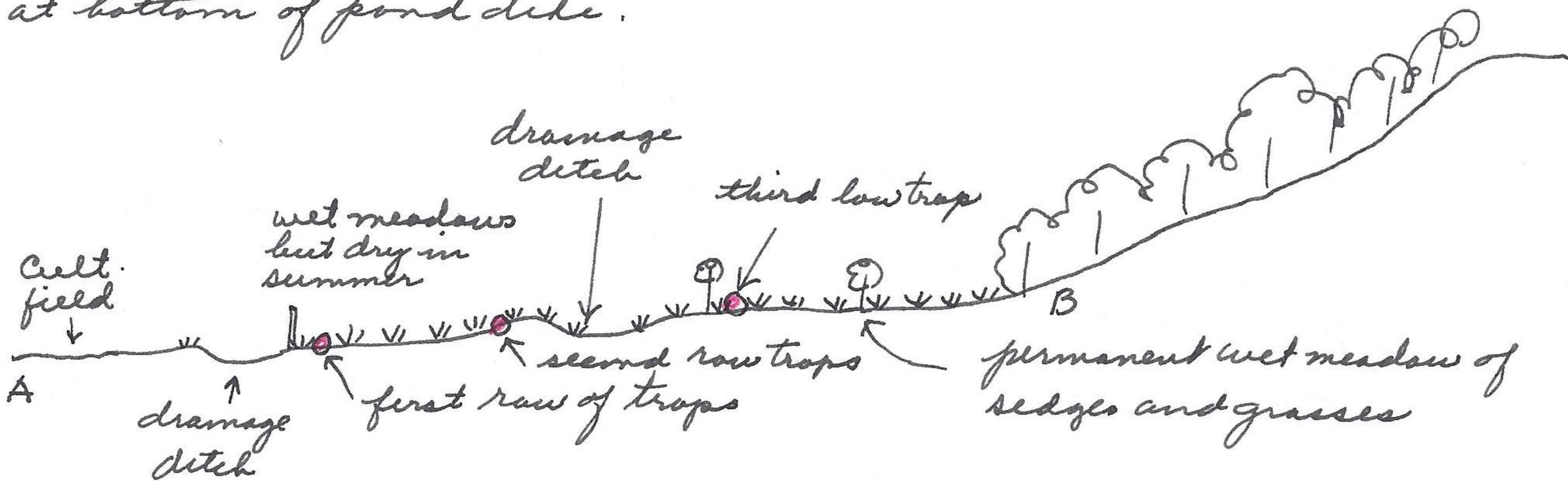
The above locality is pond and spring SW of abandoned house on hill. (See March 2 for general map of this area; one below is from the map of March 2.) Set 100 traps, 20 feet apart in several situations, some repeats of trapping March 2 and 3. Set traps between 5:30 and 7:00 P.M. (temp 43°F), the latter time with just enough light to see ground but no detail. Approached via road from Kanwaka on highway 40. S to NE corner sec 11, thence W to trapping area in NW 1/4 of sec 11, T. 18 E, R. 13 S.

The day has been raining and cold. At about 5:00 clouds moved to east and clear sky appeared to west.



Traps mainly in damp to wet situations.

Traps 1 to 22 at base of wet meadow except last three at bottom of pond dike.



Traps 23 to 30 up wet meadows from spring. Trees interspersed
Traps 31 to 49 south side dike of drainage ditch leading into pond
this area does not support many trails of microtines. 31-32-33 on upper edge of pond.

March 8, 1963