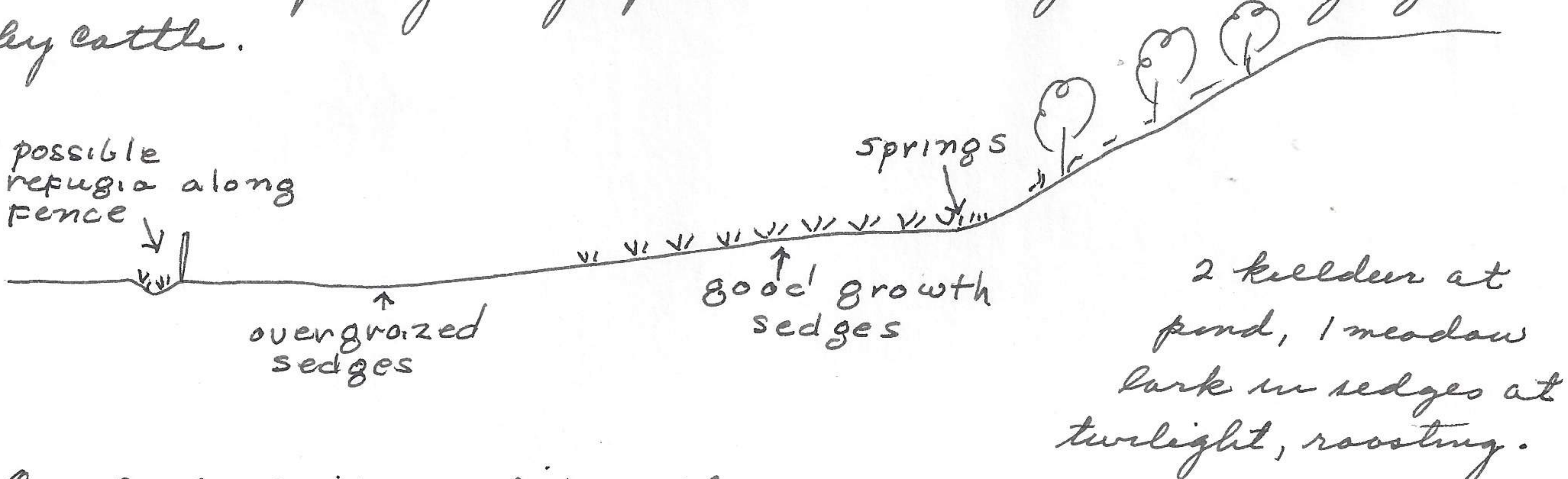
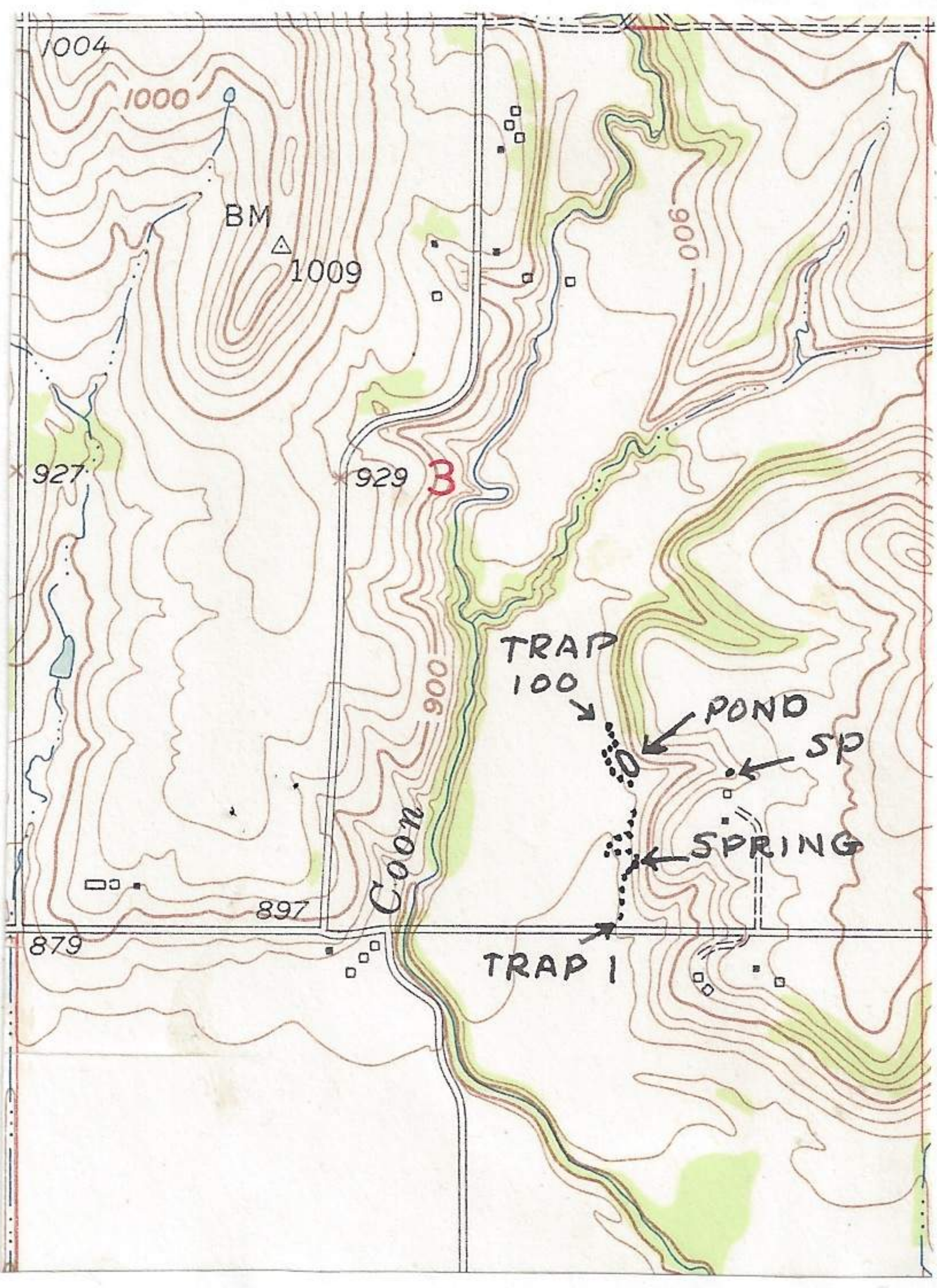


2 2/10 mi. n and 3/10 mi. w Clinton (center of town at cross-roads), Douglas Co., Kansas

April 5, 1963

This locality is the spring (largest one and first one north of road; see March 23 for map of area). Set 100 traps, in sedge and grass. all traps except 95-100 in wet to damp situations and in (including 95-100) trails made by meerkats. 5:30 P.M.

The sedges are typical meadow growth, averaging 1 foot high and developed to hummocks by cattle. The best runways were associated with the wet areas, not with the wet areas but adjacent. Fields completely grazed did not support grasses high enough for overhead protection. Springs have slow but running water. Traps 95-100 were in dry area of undisturbed andropogon and other weeds but associated with springs to S. It is probable that *Synaptomys* used this area when springs dry up and the sedges are overgrazed by cattle.



One cottontail rabbit with well developed nest or resting spot 2 feet into sedge along east side at base of hill. Hill-side not particularly favorable for cottontail. Enroute to this area made the following observations (starting 5:00 P.M.). mileage 19.3 n end proposed dam. 19.7 shrike; 20.4 2 horned larks; 21.0 bridge over Wakarusa; 21.1 S. Owl 300 feet to S; 21.6 shrike; 22.3 bridge over Wakarusa (now travelling n); 22.6 6 crows; 23.2 corner & now to E. Left car at base of hill on Coffmans property. Returned some way after twilight (late twilight is when I cannot distinguish mammals in traps on the ground) but did not see animals or birds in traps or car.

April 5, 1963