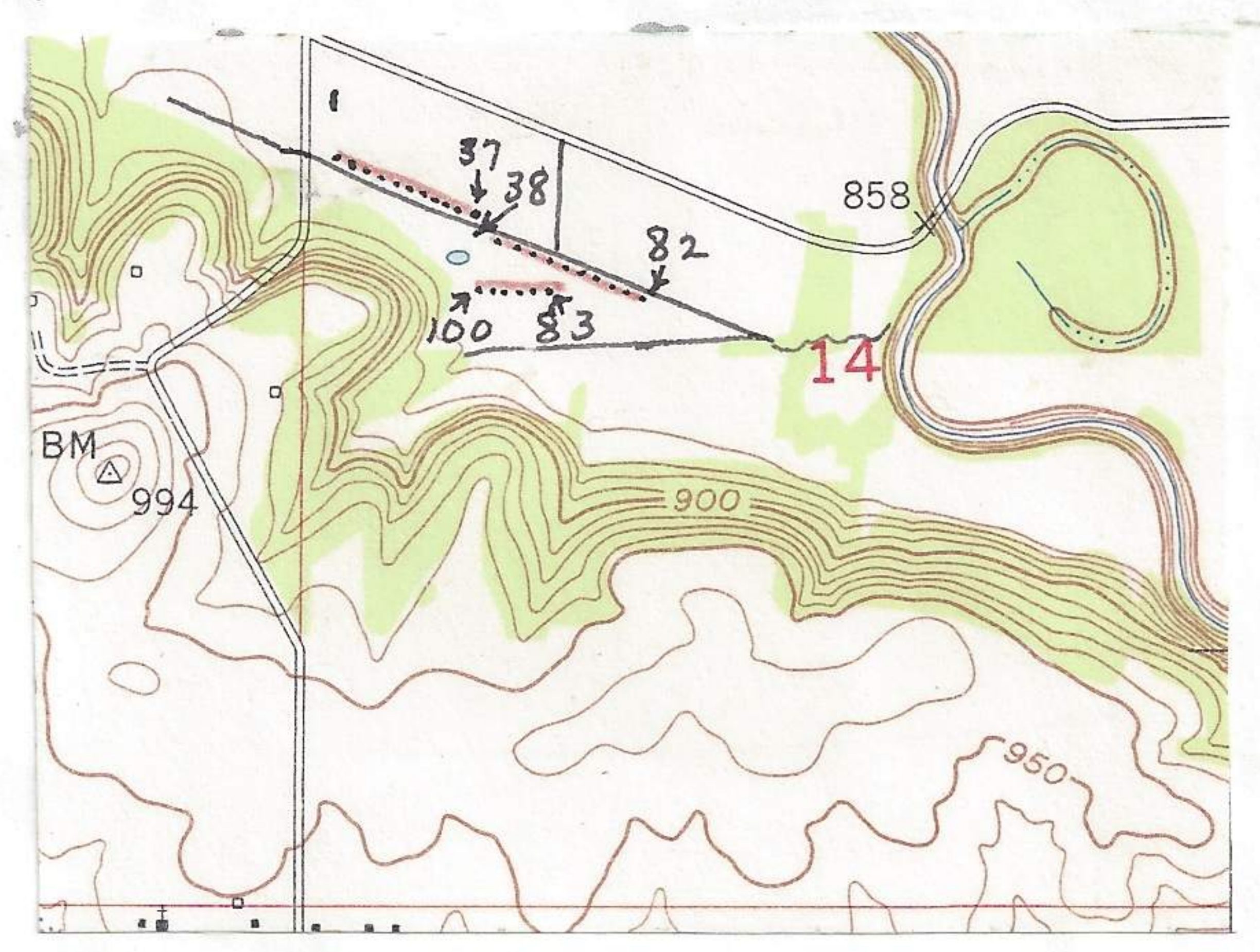
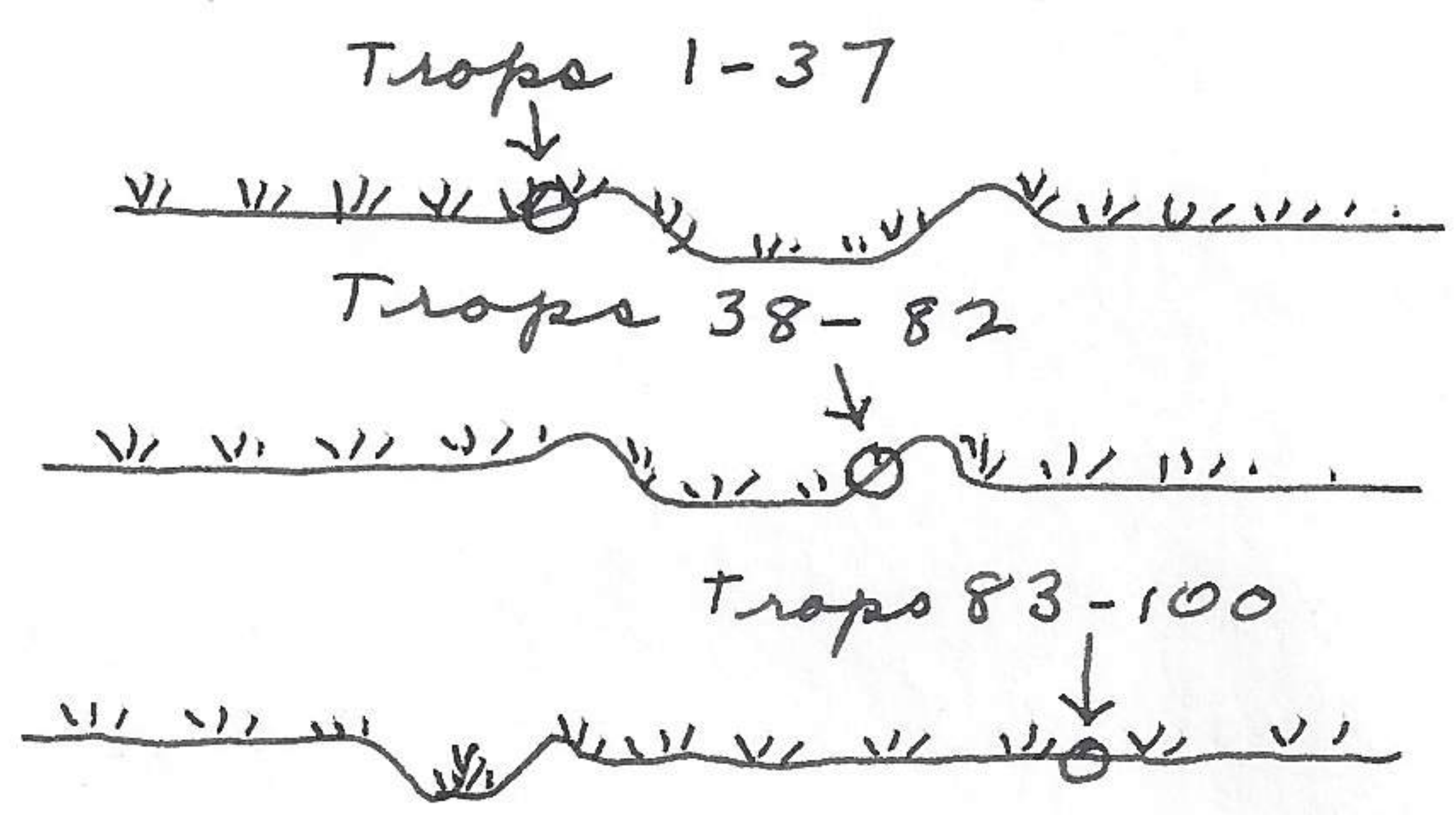


4,100 ft N and 250 ft E Clinton, (Center of town), Douglas Co., Kans.

April 6, 1963

Set 100 traps, 20 foot intervals, along dike. Trap 1-37 on N side of drainage ditch; traps 38-82 on S side of ditch and 83-100 in meadow.



Slight depression on either side of dike (each side of canal) provided good sedges and grasses. Runways continuous. The best area N of drainage ditch was an area of approx. 15 feet beyond edge. The sedges are higher than field of grasses to N. Sedges S of canal or ditch more continuous than on N side. Traps set between 5:00 P.M and 6:00 P.M. Sun still about 1/2 hr before sundown. Two Wilson Snipe were in drainage ditch near pond. Quail called from field to north. Several red-winged blackbirds along drainage ditch and on territories.

On way back to Lawrence made complete census of birds along road in 100 foot corridor on either side. Left at 6:00 P.M. at mileage 81.4 at dike on road to Clinton. At 81.5 road to E, 2 sharp-shinned hawks in air. 82.1 bridge over Wakarusa river, some small birds; 82.6 crossroads, no horned larks. 83.7 now at N end of proposed dam of Clinton Reservoir.

April 7, 1963

Picked up traps and mammals from traps set last night. Entered area at N center border of Sec 34, R 13 E, T 12 S at mileage 02.5 at 9:15 A.M. Will make complete census to trapping area. 02.7 meadow lark, red wing; 03.0 2 meadowlarks; 03.4 red-wing; 03.4 good field for microtines to S; 03.5 2 meadowlarks; 03.8 mourning dove; 04.1 2 meadow larks; 04.4 2 meadowlarks; 04.5 2 meadowlarks and 2 mourning doves; 04.6 road; 04.7 to S, cardinal; 04.9 cardinal; 05.3 yellow-shafted flicker; 1 fox squirrel; 05.4 2 meadowlarks, 1 redwing, 3 cowbirds; 05.7 bridge over Wakarusa; 06.1 sparrow; 06.3 road to Clinton, 1 meadowlark; 06.4 at trapping area at road crossing dike. Checked traps. It was unusual that

the S side of dike supported only *Reithrodontomys* in microtus runways. 2 Wilson snipe in drainage ditch. Returned to Lawrence via valley road. At 06.5 road to E, shrike; 07.2 bridge over Wakarusa river, cardinal along river, 1 bluebird; 08.8 N end of proposed dam. No birds noted between bridge and N end of dam.

April 6, 1963