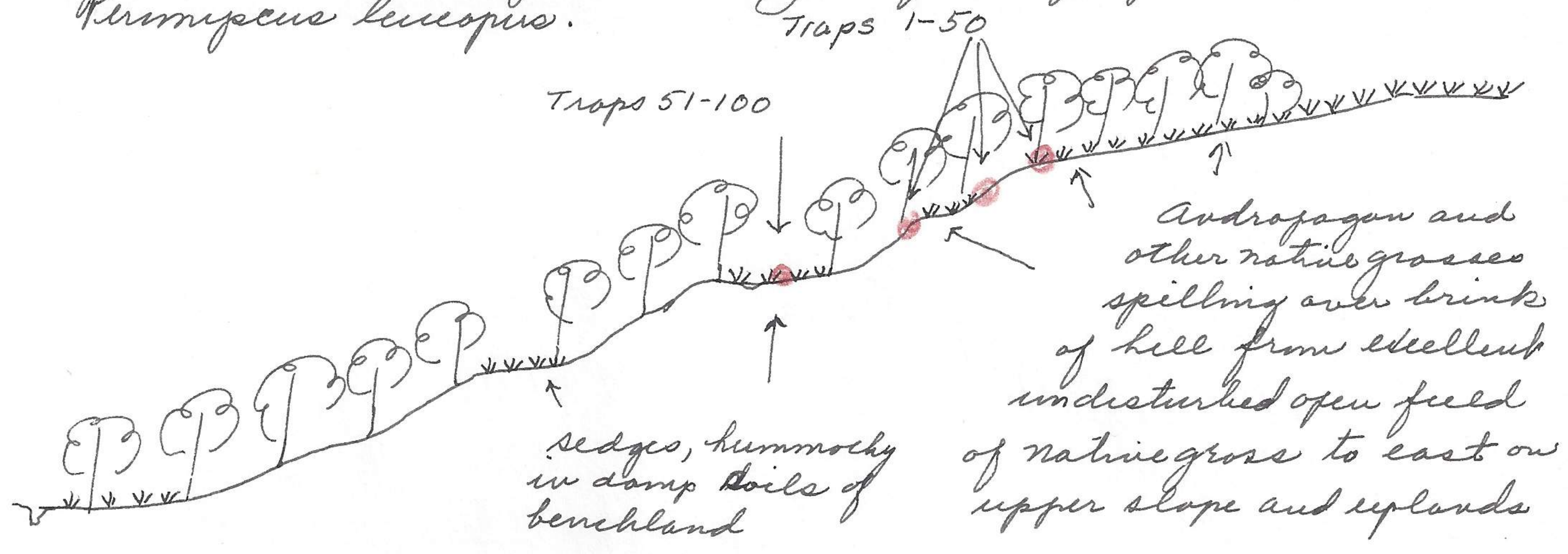
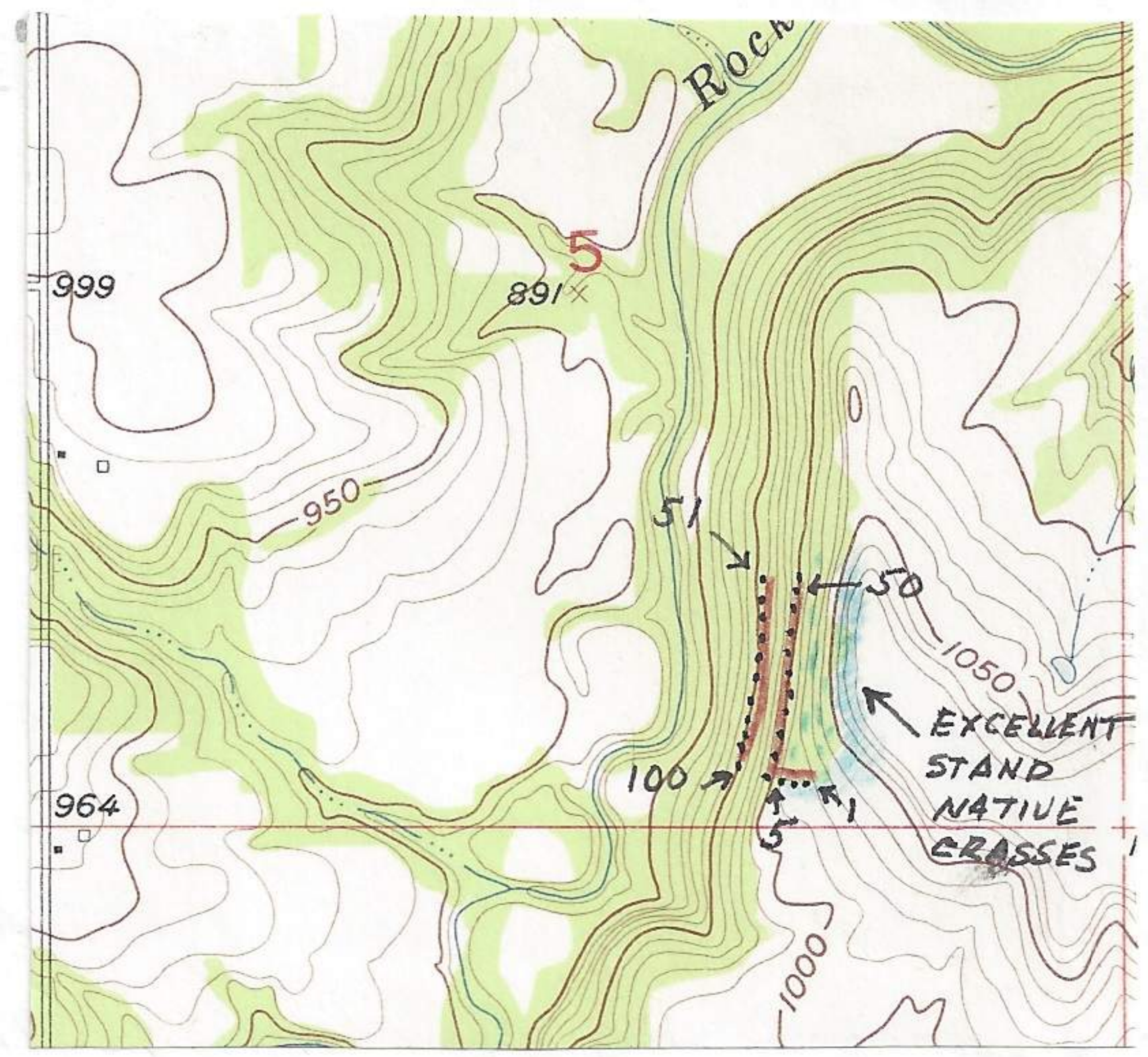


for *Microtus ochrogaster* but good for *Pitymys nemoralis* and *Peromyscus leucopus*.

April 9, 1963



The general floor cover was weedy, brushy, downed timber, damp sedge benches and steep barren soils <sup>and rocks</sup> on steeper slopes below benchlands. Except for lack of permanent springs the community could be considered as favorable for *Synaptomys*. Community on upper slopes beyond trees are excellent for *Microtus ochrogaster* and possibly *Synaptomys*. Recently this area has been developed for grazing cattle and horses with new fences in several directions.



A few cattle had been put to graze in area perhaps ~~but~~ not longer than 2 days previously. These cattle will destroy the undisturbed condition of this climax slope. Skies overcast and rain is promised for tonight. Finished trap line at about 10 minutes after sundown. It was late twilight before a got back to car near bridge over Rock Creek.

3 17/20 mi. S and 2 3/10 mi. W Clinton (center of town), Douglas Co., Kansas  
 April 10, 1963

Checked trap line of 100 traps set last night. Left Lawrence 7:00 A.M., temp. 46°F, raining. Kept complete census from 5 end proposed dam. Followed regular highway to Clinton, thence SW on diagonal road to east middle border sec 31, thence S to bridge over Rock Creek. Left car 3/10 mile east of bridge on regular road. At 5 end dam at mileage 52.6; 54.6 meadowlark; 55.3 3 meadowlarks; 55.7 redwing; 1 meadowlark; 56.3 Clinton (center of town), 8 grackles, stopped raining; 56.6 redwing (over) →