

1 1/10 mi. S and 3 mi 200ft W Clinton, Douglas Co., Kansas

April 19, 1963

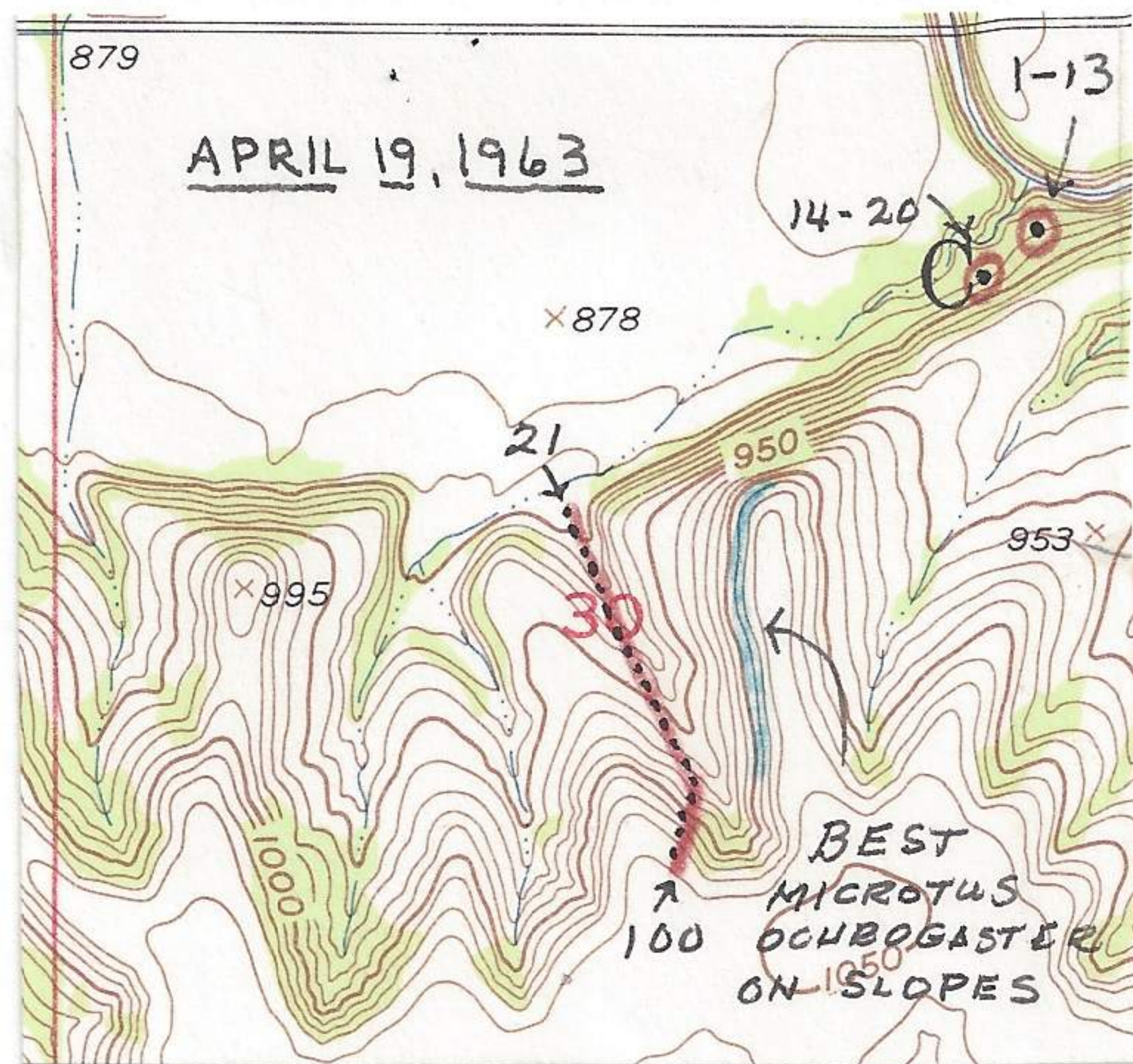
Set 20 traps at above locality (traps 1-20) and at a point 3 9/20 mi. W and 17/20 mi. S Clinton, Douglas Co., Kansas set 80 traps. The first 13 traps were in bog (see previous date Feb 22, 1963 for description of area) and traps 14-20 in another wet area approximately 400 feet SW of the main bog. Traps 21-100 were from mouth of a canyon at valley level define as above locality and to top of ridge to the south. Traps placed mainly near bottom of canyon on slope.



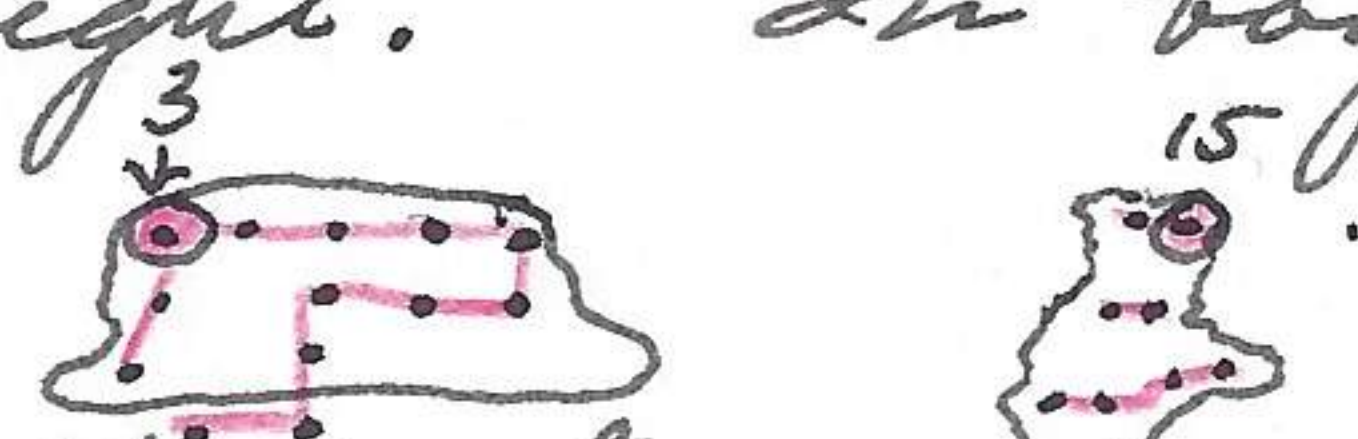
This canyon and canyon to east have not been grazed for many years and the native grasses are covering nearly all slopes.

To the west the range is grazed to almost lowlike in appearance.

Enroute to trapping area made complete census of birds and mammals. These birds & mammals were within 100 feet on either side of road. Some small less conspicuous birds were not identified. Mileage at N end of proposed dam 13.8, wind up to 35 mi per hour and from W. 14.2



14.2 keeldeer; 14.5 horned lark; 14.8 horned lark; 15.2 crow; 15.4 bridge over Wakarusa River; 15.8 sparrow hawk; 16:0 passing road that goes to Clinton; 16.6 opposite bridge that crosses Wakarusa; 17.3 cardinal; 17.6 main road from Clinton (now going W) 18.4 bridge over Wakarusa; 19.1 road now to S; 20.0 18 Harris sparrows, 2 doves, 1 redwing at corner where road turns SSW, 20.4 redwing, mourning dove; 20.9. new to S, 1 turkey vulture; 21.1 bridge across wakarusa, left car here and walked S to trap area at bog near mouth of drainage from SW. Set traps from about 1 1/2 hours before twilight. In bog set traps according to the following pattern.



At twilight took 2 *Synaptomys cooperi* at twilight in traps numbers 3 and 15. Well give numbers in tomorrows listing. a redtail hawk called as if it had a nest between bog & mouth canyon to SW. One mourning dove nest of 2 eggs, nest 3' high at trap 24. Tree dead but many limbs gone protection. Used old nest lined with feathers. no attempt to reconstruct. Towhee on hillside above smaller bog. At about sundown a *S. bleekeron* flew W up river valley. 1 cottontail in each of two main trapping areas.

April 19, 1963