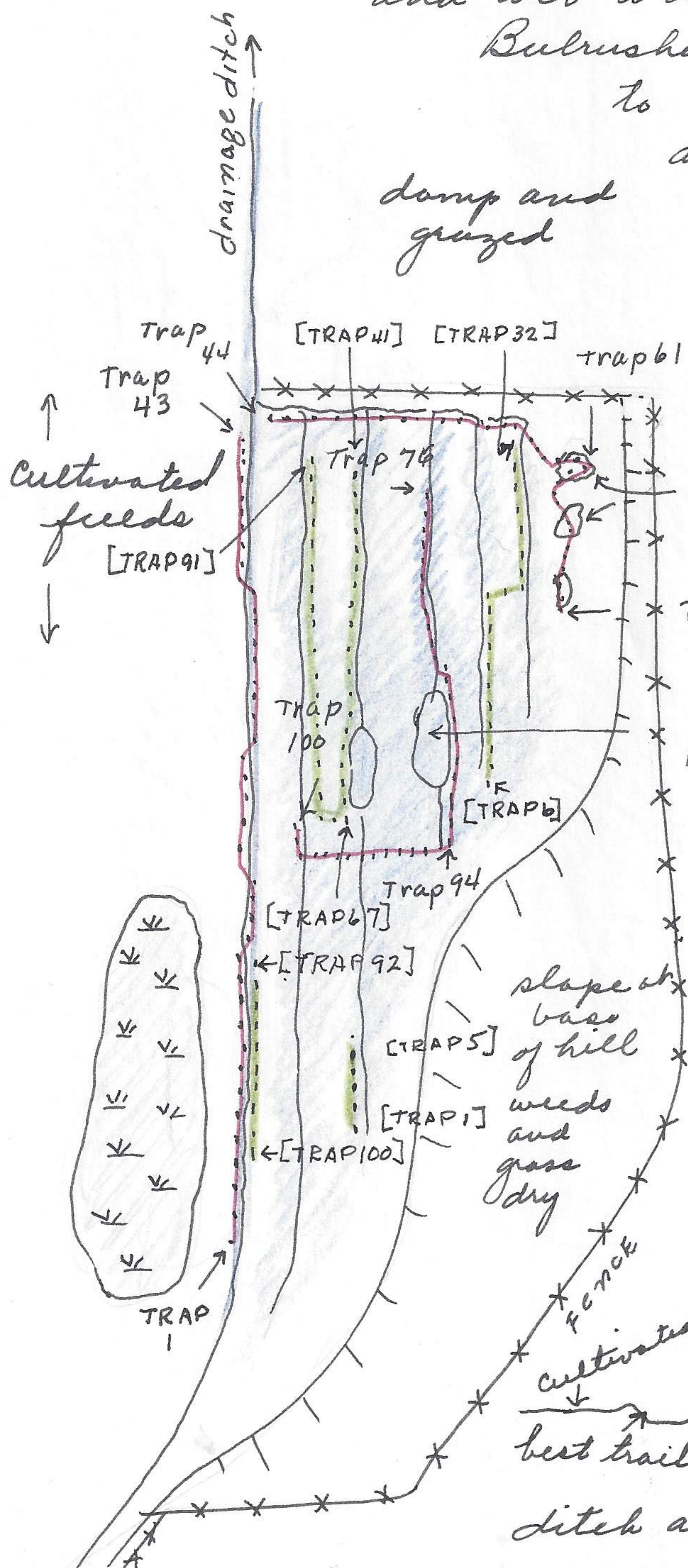
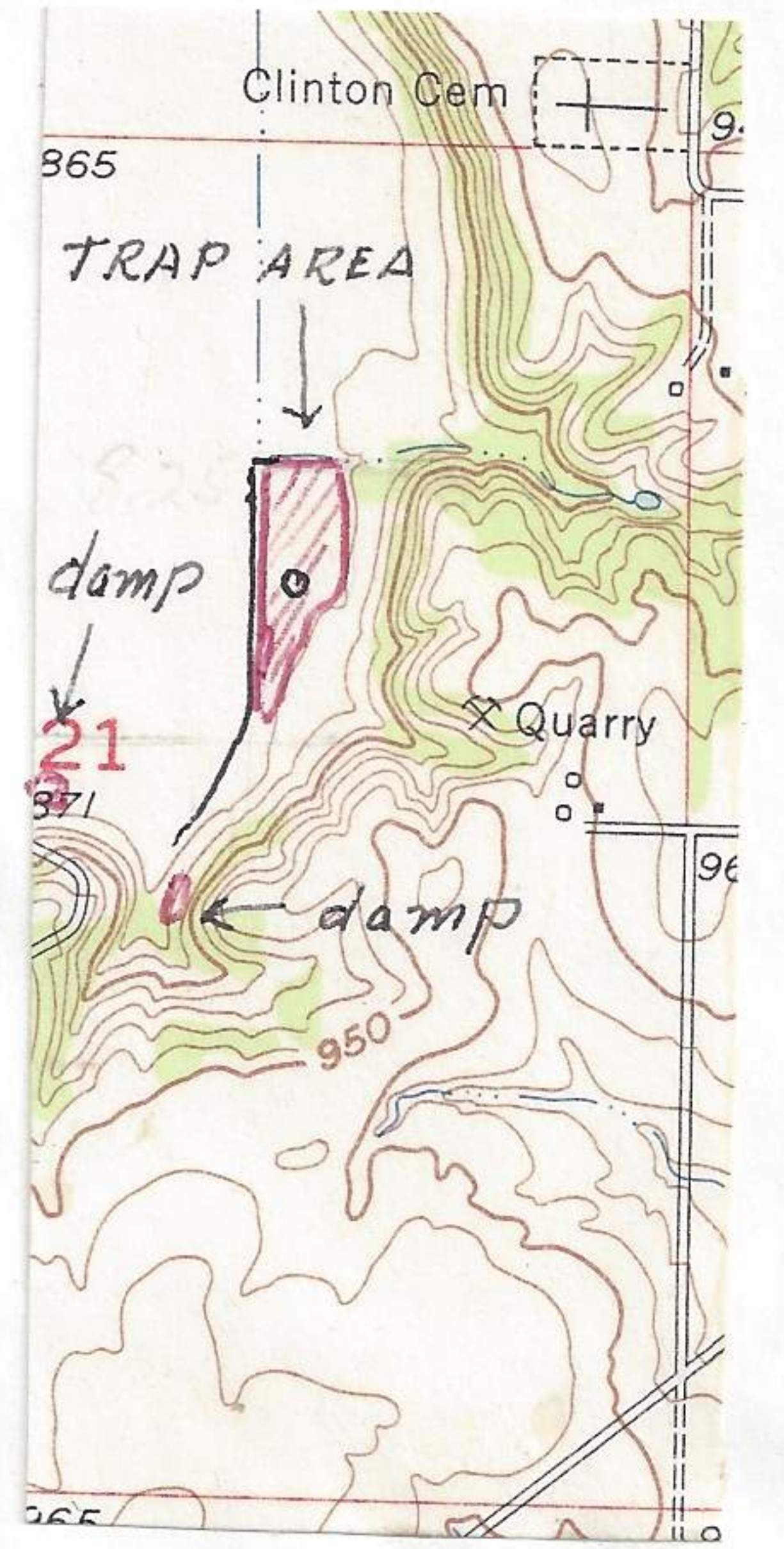


April 20, 1963

This evening set 100 traps at the above locality. The largest bog area, ^{in the marshy area} is the exact location. This is the most extensive bog area discovered so far in the Clinton Reservoir area. The dominant grass or sedge in the wettest areas is _____ . It gives the bog the hummocky life form. It is associated with the areas of standing water especially surrounding the bulrushes and along the drainage courses. The blue is the areas of this type of sedge and wet to damp soils.



Bulrushes are confined to bogs proper and in isolated stands along the drainage courses.

The nearer to standing water the more perfectly are the sedges as isolated clumps of blades with intervening areas of mud. As the soils become drier or less damp these sedges are closer together and are joined by other sedges making a continuous stand of grass. These sedge are completely utilized ^{by microtines} with sign and segments of stems at most any place where one separates the sedges. The most concentrated microtine activity is along the main drainage tall weeds
 high dry sedges
 Brom grass
 ditch and is a continuous runway.

- TRAPS APRIL 20
- TRAPS APRIL 27 (see notes of that day)