

Univ. Kansas, Douglas Co., Kansas

Feb. 27, 1964

new ice covers Patters Lake on campus. In a hole dug for a post noted soils damp down to at least 20 inches. Top surface dry.

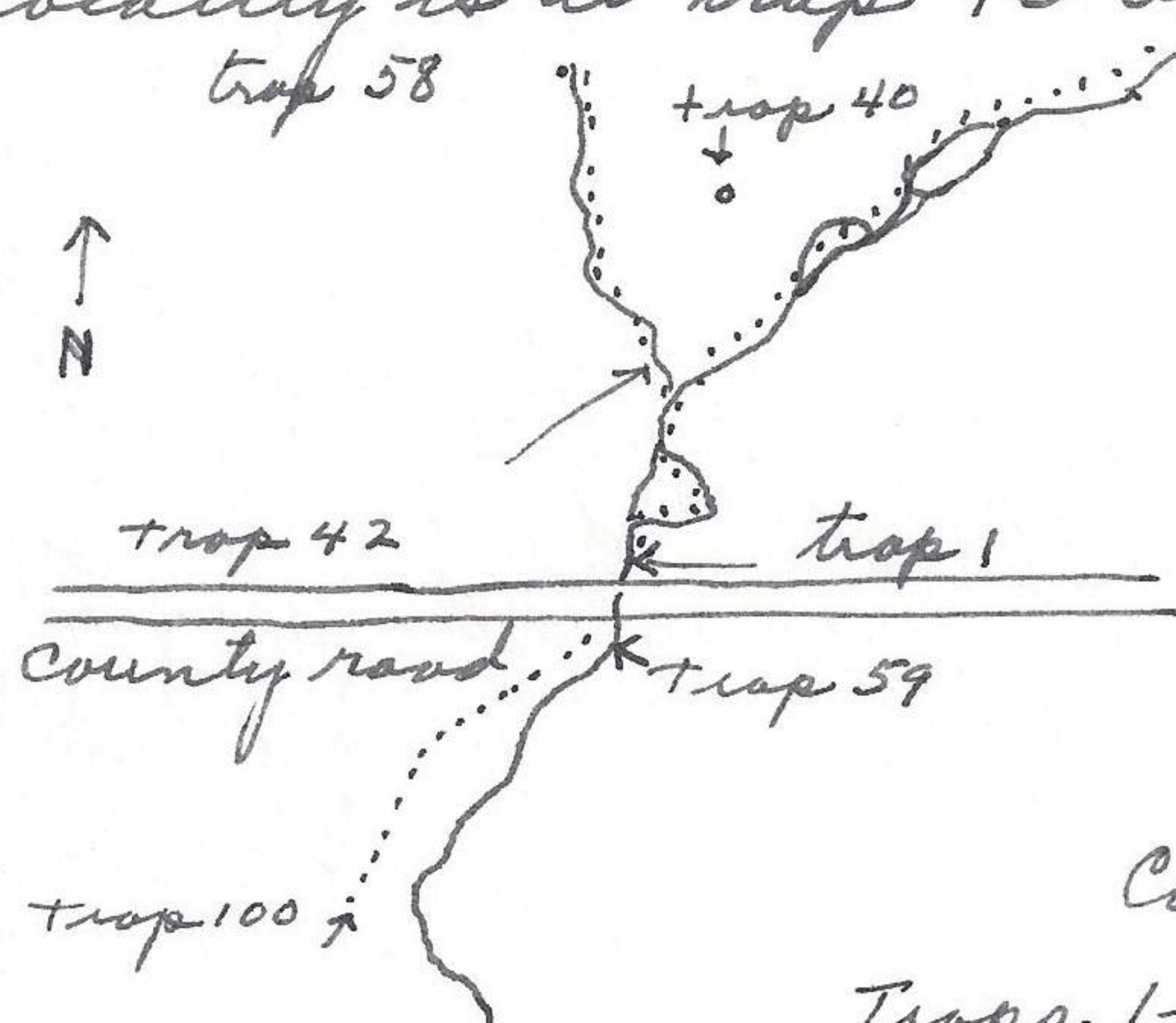
Feb 28, 1964

50% of ice left Patters Lake by 4:00 P.M.

2 2/10 mi N and 2/10 mi. E Clinton (center town),  
Douglas Co., Kansas

Feb. 28, 1963

Set 100 traps approx 4/10 mi. ENE of Coleman's house. The above locality is at trap 40 at base of slope. Traps placed 20' apart



This area has been grazed but sufficient native grasses along water courses (now dry) for meadow mice. 3 cottontail rabbits along trapping route. Traps set between 4:00 P.M. and 6:00 P.M.

Feb 29

Collected mammals from above trapline.

Trops 1-39 and 42-58 in runways previously used probably when soils damp, ~~no~~ runways not in use. Narrow edges of vegetation <sup>have</sup> less microlines than more extensive veg bordering vegetation.

Synaptomys in trap 40 in patch native Andropogon not associated with drainage.

Traps sprung 4, 10, 11, 28, 46, 55, 57, 74, 75, 86, 93, 94, 98.

Preparation of mammals from above trap line.

	640229-1	<i>Reithrodontomys megalotis</i>	126-58-17-12	♂	9 gms test 4.5 mm
	640229-2	<i>Microtus ochrogaster</i>	158-37-20-11	♀	52 gms OX2 emb 15 mm
	640229-3	"	143-30-185-11	♀	48 gms, 2x1 emb 23 mm
	640229-6	"	160-41-20-11	♂	46 gms, test 11 mm
	640229-13	"	140-32-19-11		41 gms ♂ testis 13
SK. ONLY	640229-14	<i>Reithrodontomys megalotis</i>	121-58-17-12		8 gms ♀ ut normal
	640229-26	<i>Microtus ochrogaster</i>	134-28-18-19	♀	37 gms ut normal
SKU	640229-40	<i>Synaptomys cooperi</i>	131-24-20-10		40 gms ♂ testis 7 mm
SK. ONLY	640229-47	<i>Peromyscus maniculatus</i>	171-79-21-14		26 gms ♂ test 7
SKU	640229-54	<i>Synaptomys cooperi</i>	124-24-19.5-9-30		30 gms ♂ testis 7 mm
	640229-59	<i>Microtus ochrogaster</i>	142-33-19-11		40 gms ♂ testis 13 mm
	640229-60	"	143-30-11-12	♂	39 gms testis 12 mm
	640229-71	"	157-36-20-12	♀	42 gms 2x1 emb 22 mm
	640229-81	"	141-32-11-11	♂	36 gms testis 10 mm
	640229-90	"	134-28-18-12	♀	28 gms ut normal