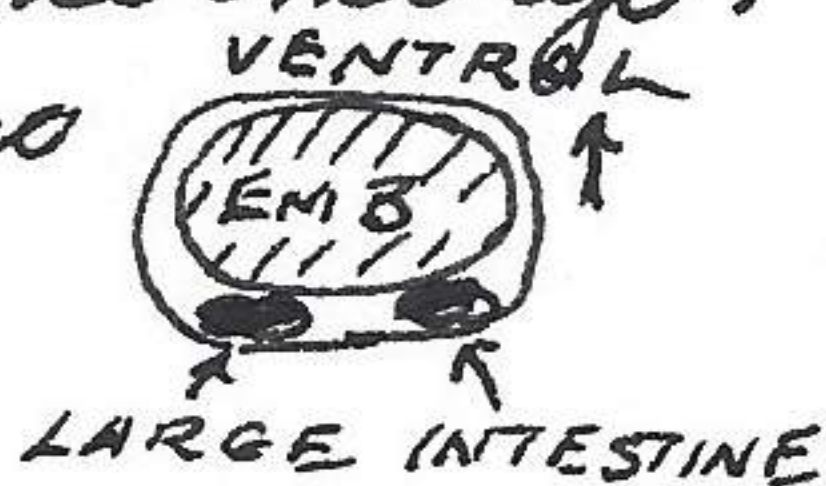


SK. ONLY	640615-76 ♀	<i>Tadarida mexicana</i>	97-33	-10-17-10 gms	303 wsp, 1 emb 17 mm (1.2 gm)
"	640615-77 ♂	"	96-33	-10-17-9 gms	302 wsp. Testis 3.3 mm
	640615-78 ♂	"	95-34	-10-17-10 gms	311 wsp testis 3.4 mm
	640615-79 ♂	"	96-33	-10-17-9 gms	310 wsp testis 3.3 mm
	640615-80 ♀	"	92-32	-10-17-9.5 gms	304 wsp, 1 emb 17 mm (1.2 gm)
	640615-81 ♀	"	89-28	-10-17-10 gms	313 wsp, 1 emb 15 mm (.9 gm)
	640615-82 ♀	"	96-33	-10-16-10 gms	² 298 wsp, 1 emb 17 mm (1.2 gm)
	640615-83 ♀	"	94-33	-10-17-10 gms	304 wsp 1 emb 17 mm (1.3 gm)
	640615-84 ♀	"	96-32	-10-17-10 gms	302 wsp 1 emb 17 mm (1.2 gm)
	640615-85 ♀	"	100-36	-10-17-10 gms	301 wsp 1 emb 17 mm (1.4 gm)
SK. ONLY	640615-86 ♀	"	89-30	-10-17-11 gms	300 wsp. 1 emb 21 mm (1.7 gm)
"	640615-87 ♀	"	100-34	-10-17-11 gms	312 wsp. 1 emb 15 mm (.8 gm)
"	640615-88 ♀	"	103-36	-10-17-11 gms	315 wsp. 1 emb 20 mm (1.5 gm)

This cave is also located as 1 mi. N + 1 1/8 mi. W
 Alabaster Caverns State Park. Owned by Jim P. Selman.
 On no occasion did the digestive tract occur below (ventral) the embryo.
 Loops did occur dorsal to the embryo, rarely laterally to the embryo.
 The wing spread is the best measurement for size of bat as end of tail skin
 Lawrence, Douglas Co., Kansas. occasionally pulled beyond
 bony vertebrae and made
 June 17, 1964 total length inaccurate



young starting at 1620 Tennessee Street left nest this date. For
 last 5 days they have been at entrance of nesting hole to
 receive food from parents. They were not seen in area after
 leaving nest. Noted a blue jay attack and almost kill a
 young catbird. Another jay struck a fox squirrel several
 times in a tree.

Lawrence, Douglas Co., Kansas

June 22, 1964

Robin Orakood, student in zoology at K.U. returned from
 Oklahoma where he collected a hundred *Tadarida mexicana*.
 He made the following statement: 60 tons of guano (bat)
 have been removed from Merrihue Cove. The prevailing
 price is \$50.00 a ton. The guano have been removed from
 entrance of cave except along sides of cave where large
 rocks interfere with excavation. At 2 mi E of Southard,
 Oklahoma at Southard Cove, approx 2000 *Tadarida mexicana*
 and a few pallid & long-eared bats, have been displaced by
 destruction of cave. Bulldozers removed top of cave which
 is pure gypsum. Orakood developed pneumonia as a
 result of an afternoon in cave. Urine droplets are always
 in the air. A tarantula 640622-1 was from near this cave.