

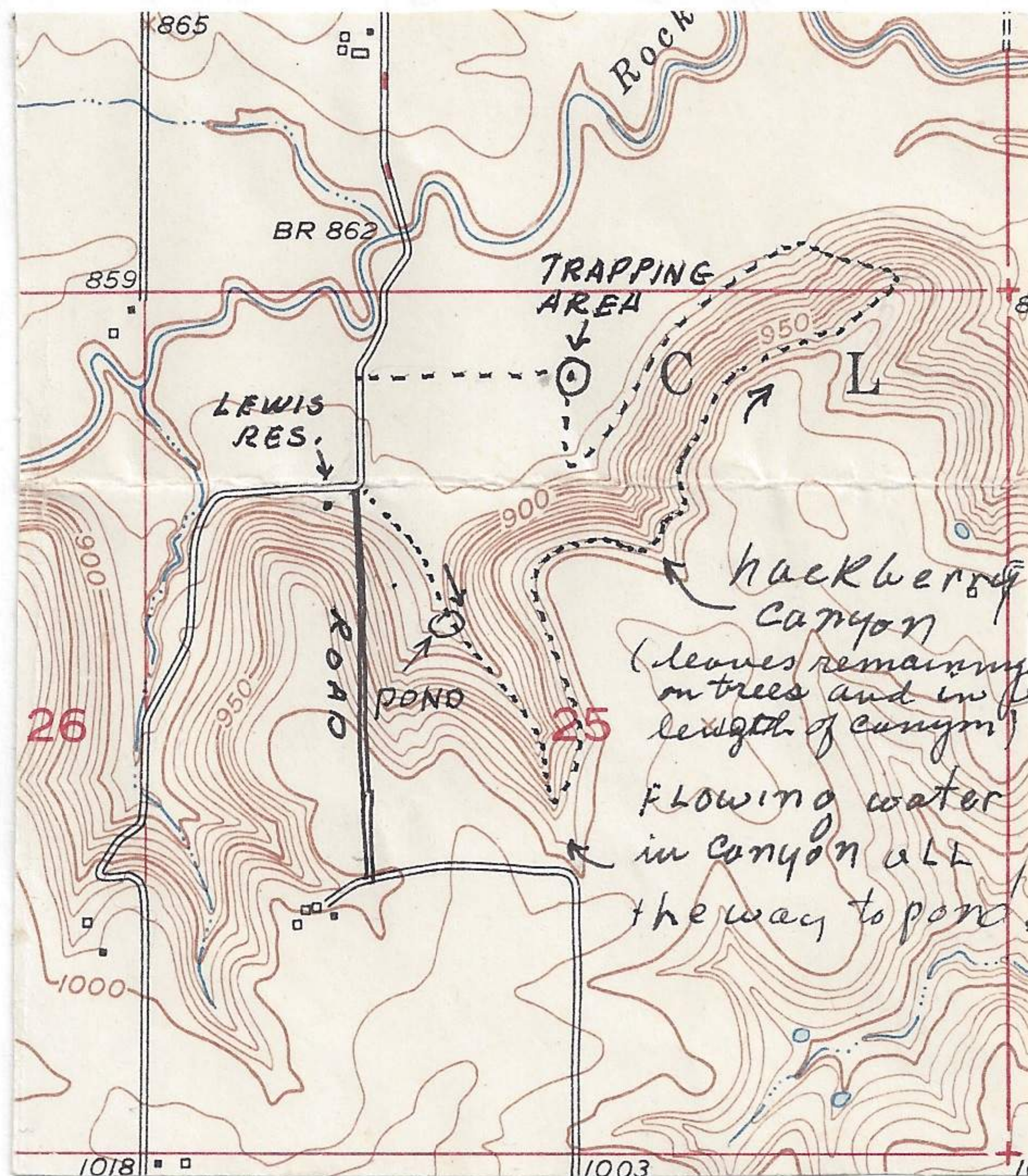
1 1/4 mi. E and 1 mi. S Clinton (center of town at store), Douglas Co., Kansas

Feb. 14, 1965

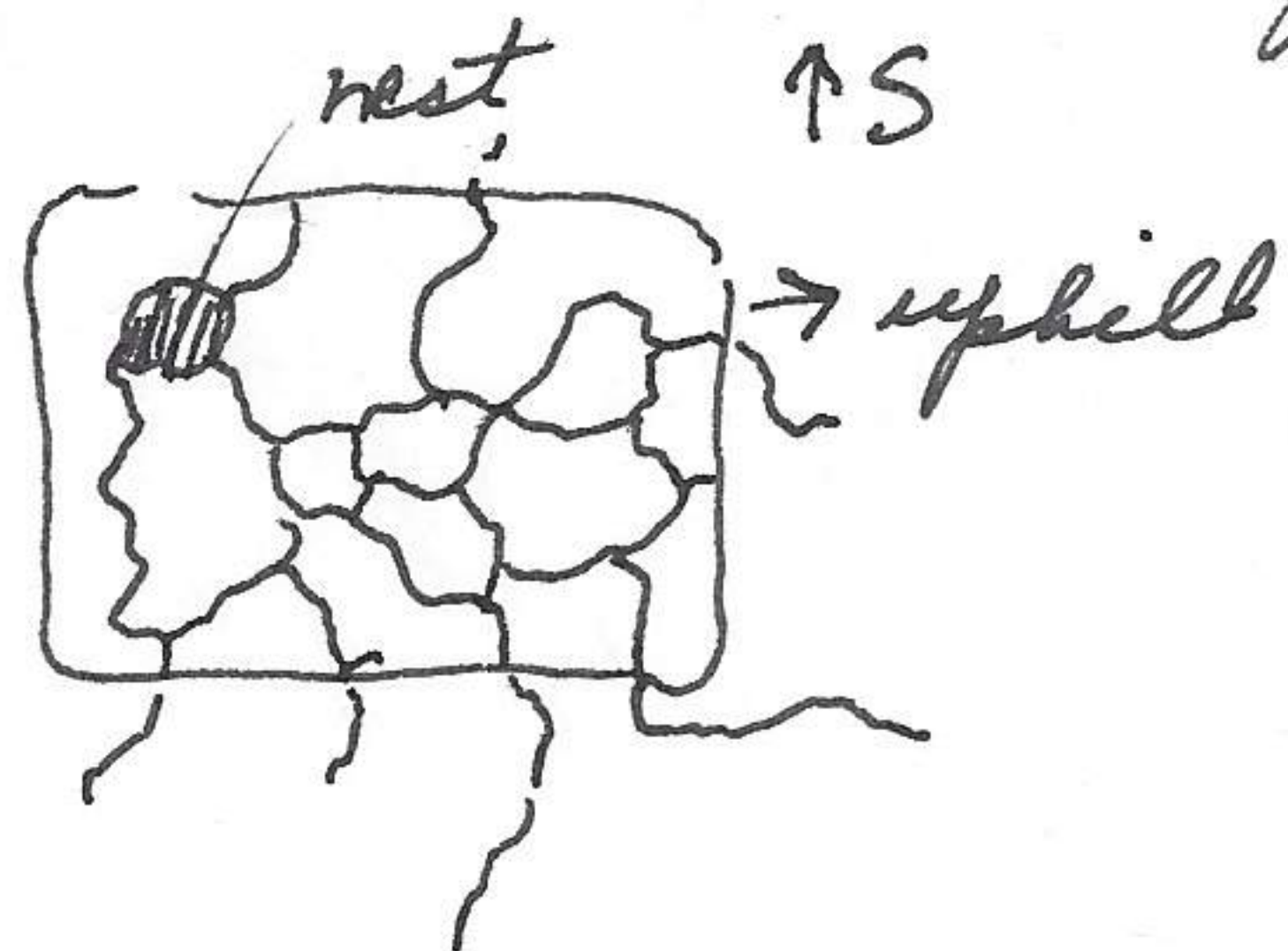
Left Lawrence 10:30 A.M (mileage 496) ^{for} trapping area SE of Clinton. Will set traps and then at sundown pull trap line. Enroute noted a sparrow hawk at pond, which was frozen, at the west side of Haskell Bottoms. 2 crows in area. Counted 13 meadowlarks up to S end of proposed Clinton Reservoir dam. at this point mileage 7.2 (this vantage point in all previous notes has been considered

the S end of dam but actually is E of the most recently proposed site). at 7.3, 2 horned larks, 7.7 1 horned lark, 8.5 at bridge over Rock Creek, ice on water but free flowing on top. 9.6 now to S; 10.6 bridge over Rock Creek, ice in river but water flowing on top. Some places completely open. Continued S to old Lewis residence. Inspected damp areas surrounding the house area (raised by last tornado).

Population of rodents low but some runways present. Under boards (doors) to west of house foundation supported *Peromyscus leucopus* (one climbed a tree 2 feet & remained) ~~longicaudus~~ and *Microtus pennsylvanicus* (3 *P. l.* and 2 *M. p.*) The two *pennsylvanicus* (one captured) had a nest and set of runways under a side of the house (removed 200 feet from original position) on sidehill among trees. The area covered was approx. 30 square feet and consisted of a series of runways, some leading beyond overhead protection in two directions. When disturbed the two mice left to the north on covered runways and did not return after 1 hour. (collected no 650214-3).



Sec. 25, R 18 E, T 13 S.



noted a large sycamore broken off 1/2 way and limbs and upper part of trees distributed as follows:

