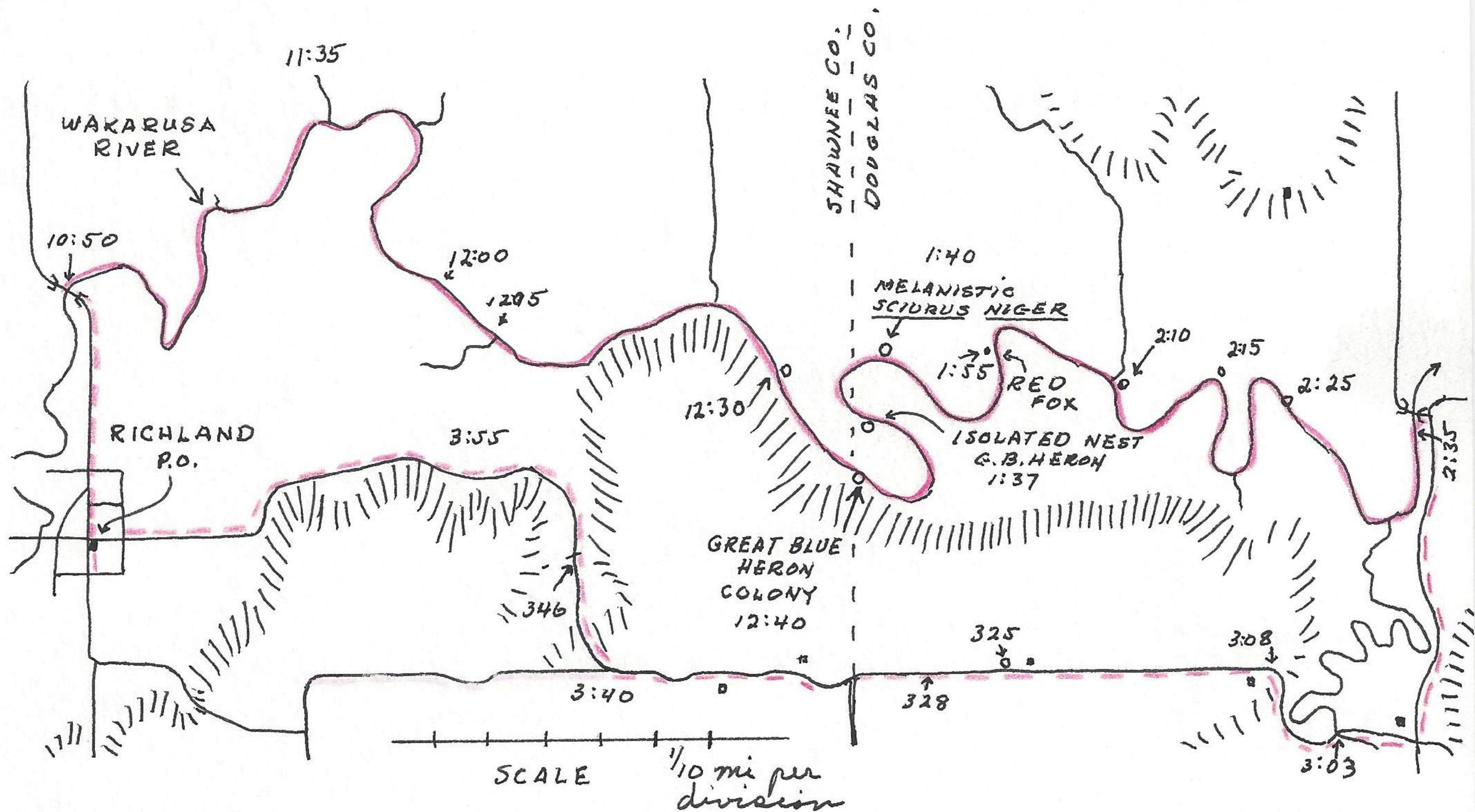


Richland, Shawnee Co., Kansas

April 9, 1965

Annette P. and I make canoe trip on Wakarusa River from bridge E of Richland to bridge near mouth of Elk



Creek down stream. Left Lawrence 9:21 A.M. with temperature 47°F. Mileage <sup>bridge</sup> 60090. Cloudy overcast and slight wind. Arrived Richland, 10:30 (mileage 014 or 24 miles from Lawrence. Enroute across the area to be <sup>partly</sup> inundated by the proposed Clinton Reservoir noted 1 red tailed hawk (just W of Clinton), 3 sparrow hawks, 10 meadowlarks mainly as singles, 2 flocks of common grackles of 250 birds each, 1 flock 18 starling, 1 eastern bluebird, 1 loggerhead shrike, 8 cardinals (singles), 3 crows, 5 horned larks, 4 mourning doves.

Left bridge at Richland at 10:50 A.M. <sup>fly canoe.</sup> Cardinal and song sparrow at bridge; 11:35 first large drainage from left. Rapids with enough water to protect canoe from rocks. Water high from last rains. Between these rapids and starting point observed 5 fox squirrels (*Sciurus niger*) one of which chased another 150 feet along crest of river bank, 8 tufted titmouse, 3 eastern robins, 2 eastern bluebirds, 1 black capped chickadee, 1 white-breasted nuthatch, 1 brown creeper?, 3 red-bellied woodpeckers, 2 downy woodpeckers, 1 yellow-shafted woodpecker, 9 cardinals, 1 song sparrow, 1 great horned owl (at rapids) 4 turtles (approx 5 inch carapace), beaver tracks along edge of river,