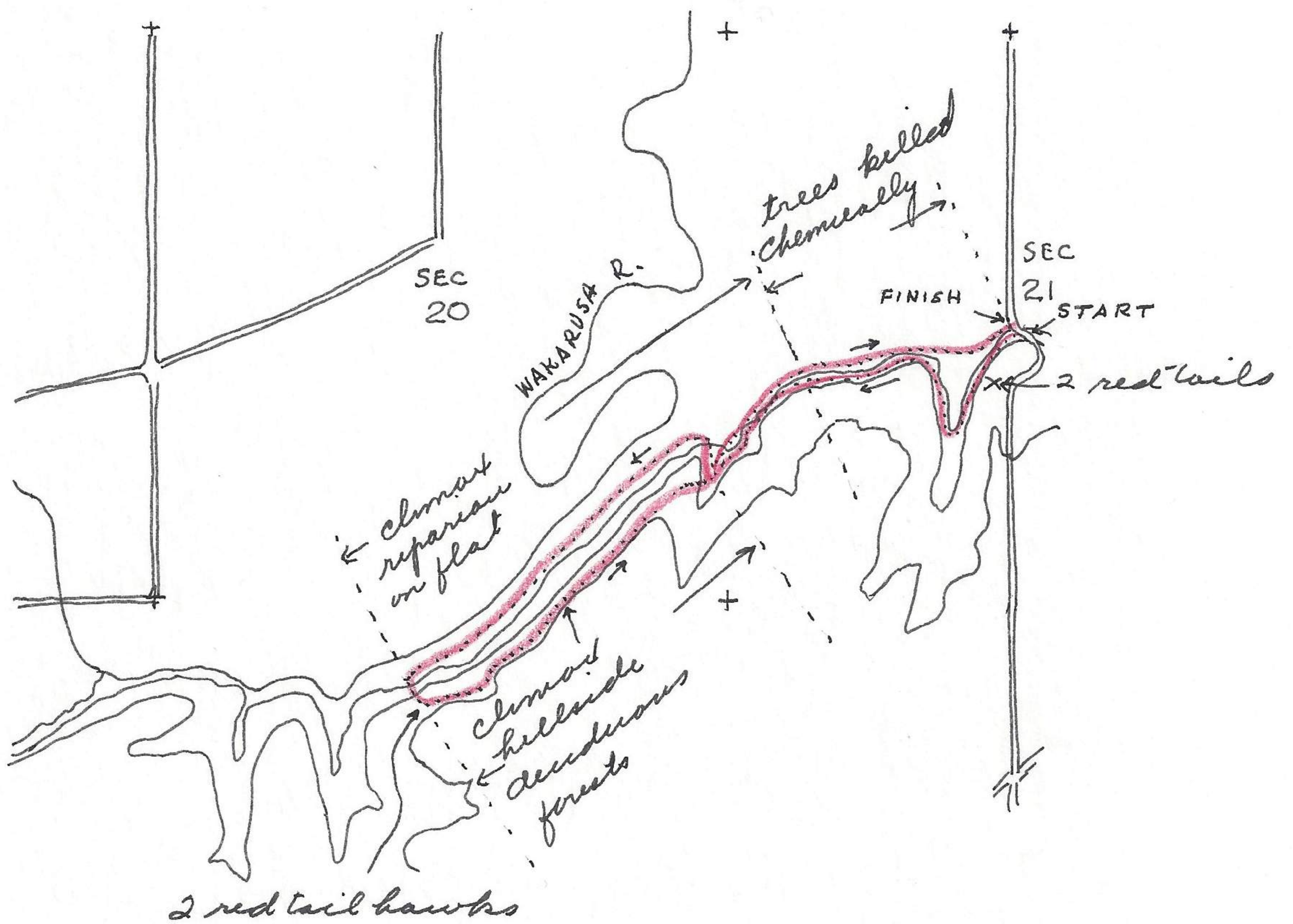


Wakarusa River, SW Clinton, Douglas Co., Kansas

May 23, 1965

made trip along S side of Wakarusa Valley, SW of Clinton, starting from road, at base of hill near middle of sec 21 and followed SW along side of valley, along base of hill to most western point



of trip and then on hillslope on return (1/2 way) then down to base of hill again. From along this route collected the following:

At 9/10 mi. S and 2 4/10 mi. W Clinton (P.O.), Douglas Co., Kansas collected a young barred owl:

650523-1 *Strix varia* total length 310 mm, wt 410 gms. ♂
 A second owl ♀, 20 feet from this one measured 350 mm total length, being larger. These two owls were 12 feet ^{above ground} in ~~length~~, one in an old fallen tree and one in a living elm. They faced the west and were calling when first discovered. At 20' away they finally recognized me and turn their head almost completely around and in this position remained motionless (20 minutes) until I knocked them to the ground with a stick. I do not think they were capable of flight. Both adults called approx 150 feet away from tall trees and did not come near but did return twice ^{to their original position} after leaving the area (returning to about same position 150 feet away). The young stopped calling when they