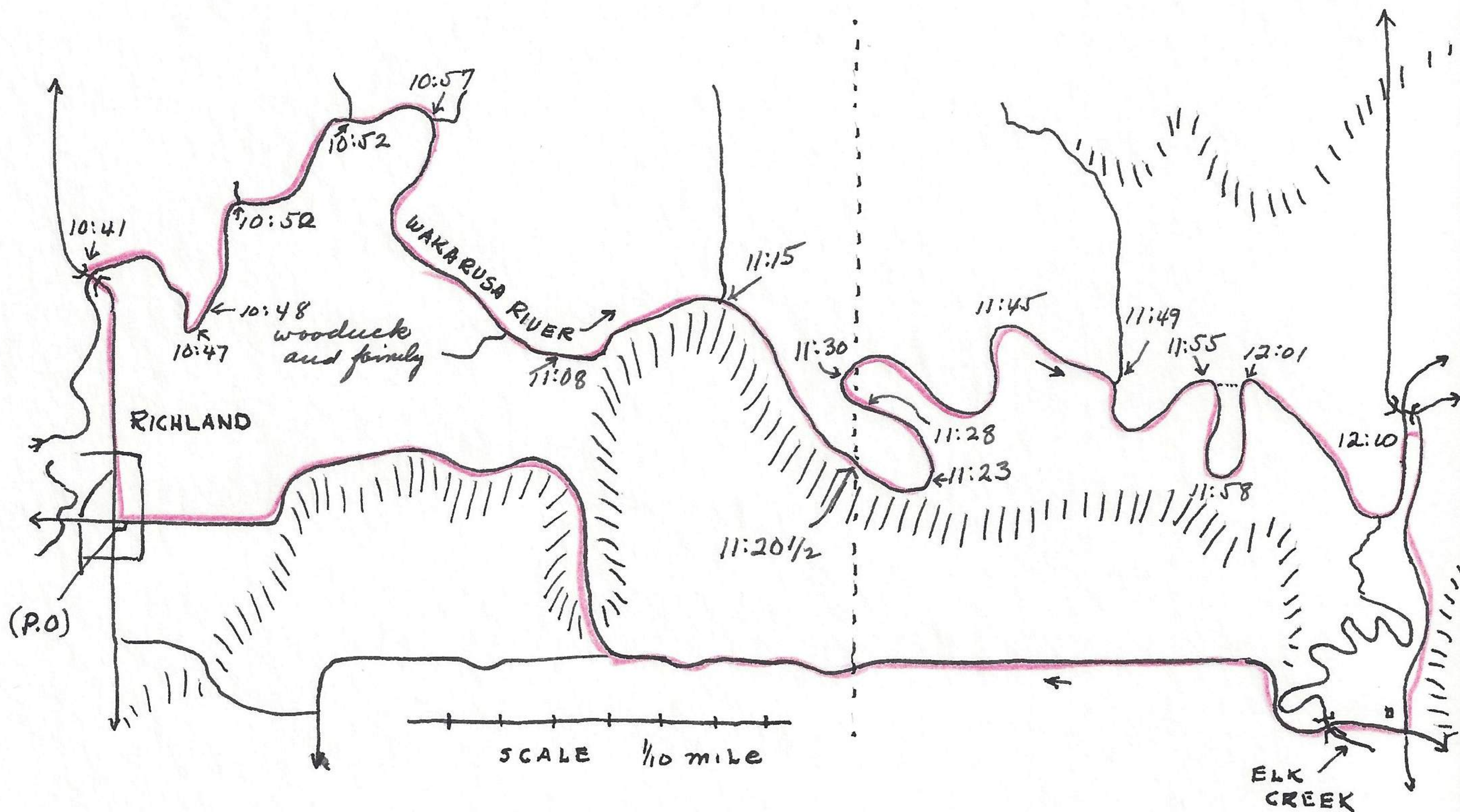


made census of birds observed across Clinton Missouri area from S end of proposed dam to Richland, following along regular highway thru Clinton, etc: Recorded according to mileage and secondarily by time as follows:



1.1 robin, 2 dickcissel; 1.2 meadowlark; 1.4 dickcissel, barn swallow; 1.5 meadowlark, chimney swift; 2.0 grackle, 2.5 crow; 2.6 dickcissel, redwing blackbird; 2.8 3 cowbirds, dickcissel, cardinal; 2.9? ~~Rock Creek bridge~~ <sup>Wakarusa</sup>, 2 cowbirds, barn swallow; 3.4 meadowlark; 3.5 2 dickcissel; 3.7 loggerhead shrike; 3.8 meadowlark, <sup>3.9</sup> mockingbird; red-tail 1 mi. to 5; 4.2 orchard oriole, dickcissel; cowbird, loggerhead shrike, mourning dove; 4.5 red-headed woodpecker; 4.6 loggerhead shrike; 5.1 redwing blackbird, mourning dove; 5.2 mockingbird; 5.3 meadowlark; 5.6 2 redwing blackbirds; 6.0 orchard oriole; 2 cowbirds, meadowlark; 6.1 2 eastern kingbirds; 6.4 now to south; 6.5 2 mourning doves; 6.8 mourning dove, redwing blackbird, dickcissel, 3 cowbirds 7.4 now to west; dickcissel, 7.9 scissor-tailed flycatcher; 8.0 2 bobwhites, redwing blackbird, meadowlark; redwing blackbird; 8.2 marsh hawk, 3 redwing blackbirds, dickcissel, meadowlark, 8.5 Shawnee Co. line, Eng Sp. 9.1 indigo bunting; dickcissel, dickcissel; meadowlark, 9.6 dickcissel, meadowlark, red-bellied woodpecker, dickcissel, 10.1 5 to Richland 10.2 meadowlark, 10.3 meadowlark; 10.5 redwing blackbird, meadowlark