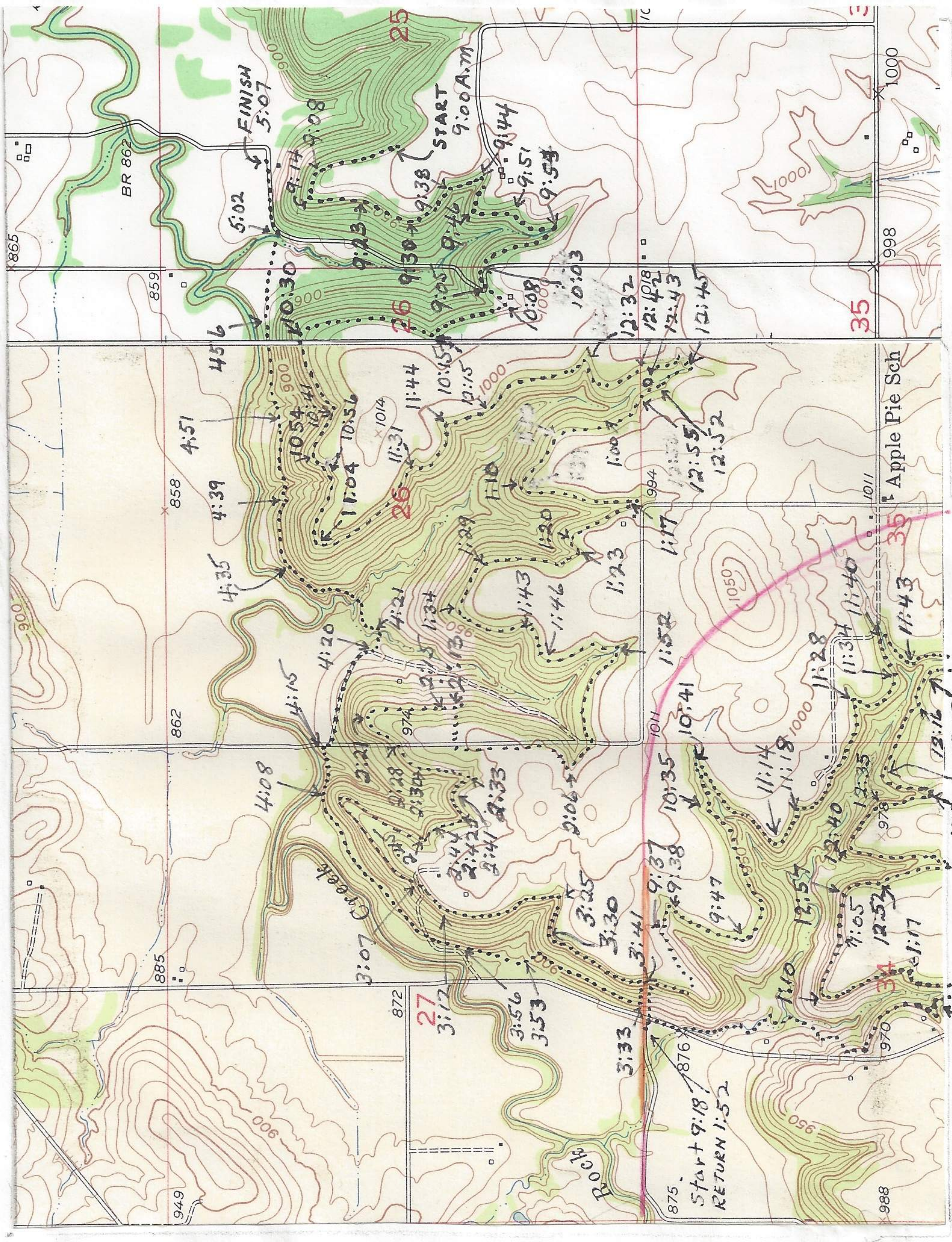


184  
88



Itinerary April 3, 1966 (7 2/10 miles benchland. 2 1/2 miles return or 9 3/10 total)  
 and  
 Itinerary April 8, 1966

1 mi to bench from car  
 4.4 mi bench route  
 1.5 return from bench to car or 5.9 miles total

SCALE 1/10 MI

