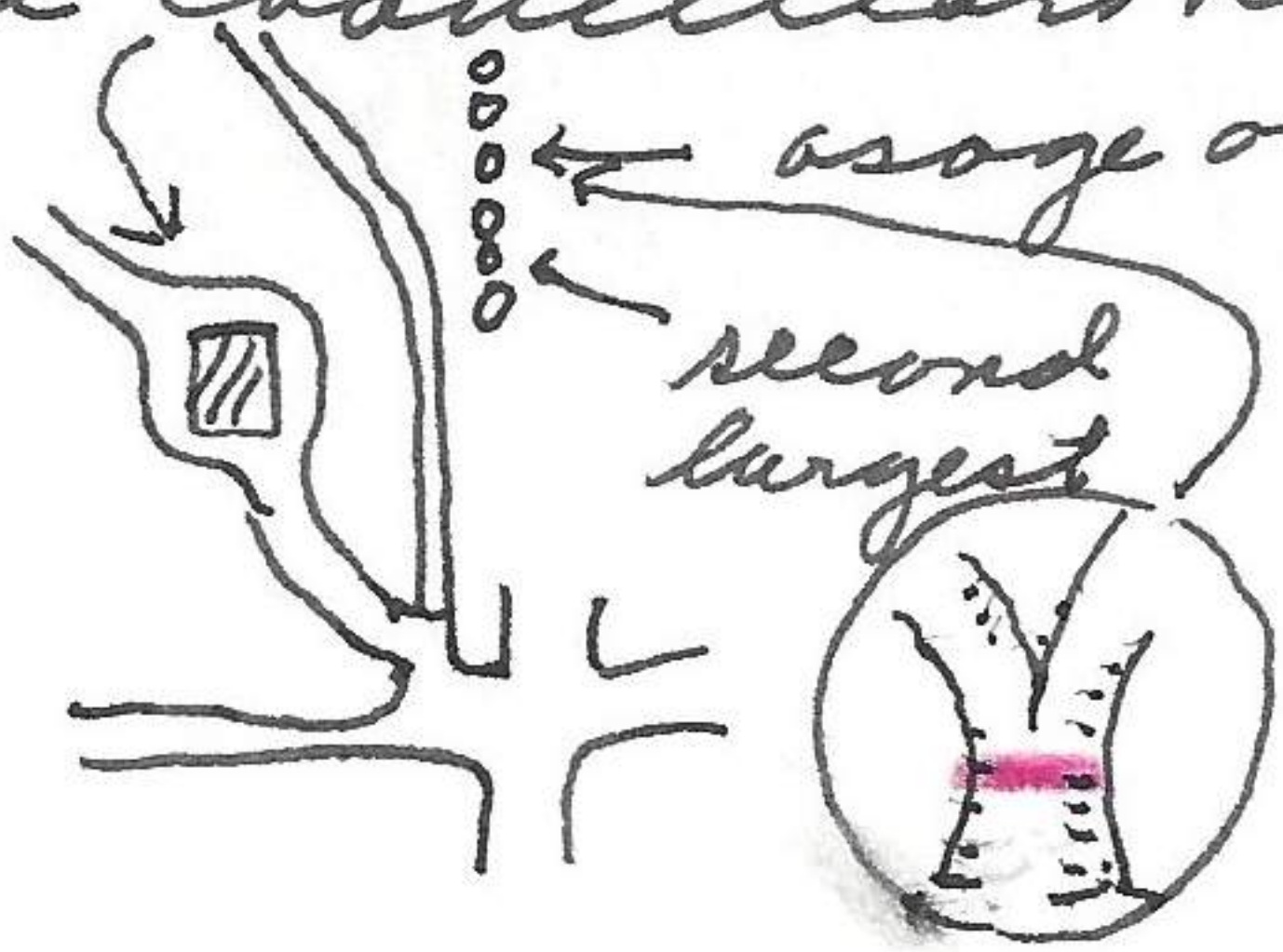


of the Chancellors Residence.



orange orange tree measured 13 feet 3 inches in circumference at 3 feet high. Two small trees in same general line. This group of trees must have been planted in early pioneer times. These trees should be checked for age. The largest tree is the largest tree of this species that I have examined in Douglas Co.,

Kaw River, Douglas Co., Kansas

April 30, 1966
James Robert Bee & Nancy Hitt made canoe trip down Kaw River from Lawrence to Eudora. Photos 660430-1 to 660430-12 as they approached landing at Eudora. Photos 660430-13 of Mary Pauline from bridge. Photo 660430-14 of car & canoe at home.
May 1, 1966

Checked birds at Sandpets at 9:00 A.M., temp cool, strong NW wind. Census is for all lakes: 38 am. Coot; 3 ♂, 2 ♀ gadwalls; 32 blue wing teal; 12 lesser yellowlegs; 2 killdeer; 1 dowitcher; 3 black crown night heron (they flew from edge of Park Lake and flew to center of intermediate lake to S and alighted on branches in water where they remained fully exposed in all directions; usual robins & red-wing black-birds, both on territories; no pied-billed grebes visible, 3 meadowlarks in adjoining field; northern violet green swallow; bank swallow?; 2 fishermen on Refuge Lake. There has been a decided decrease in numbers of birds since last surveyed.

Lawrence, Douglas Co., Kansas

May 2, 1966

Catbird singing for first time but preceded by the brown thrasher by about a month. Pine siskin still in area but in reduced numbers. Robins making cup of nest. Starling feeding young in nest. Brown thrasher copulating.

May 4, 1966

Baltimore Oriole singing

May 13, 1966

Four young blue jay (tail feathers developing) on ground below nesting tree. Pine siskin still in area but not generally distributed as in the first part of May. Olive backed thrush has been in same area and singing for the last 5 days.

Lawrence, Douglas Co., Kansas

May 13, 1966

The following information is from a letter sent by