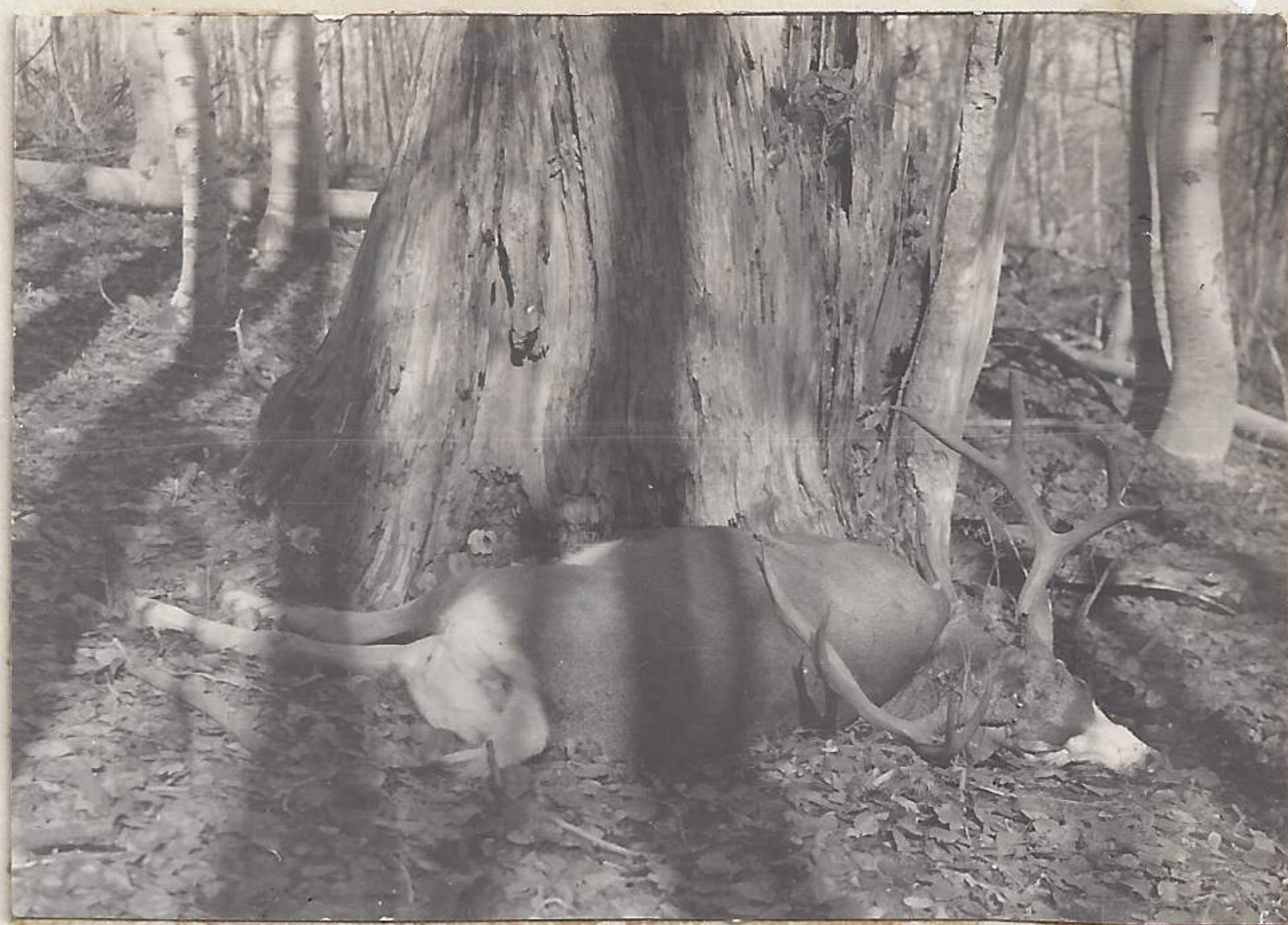




3-10-20-37 View to north from
low sheep peak. Strepaper Creek
and cloud shrouded Strawberry
in distance

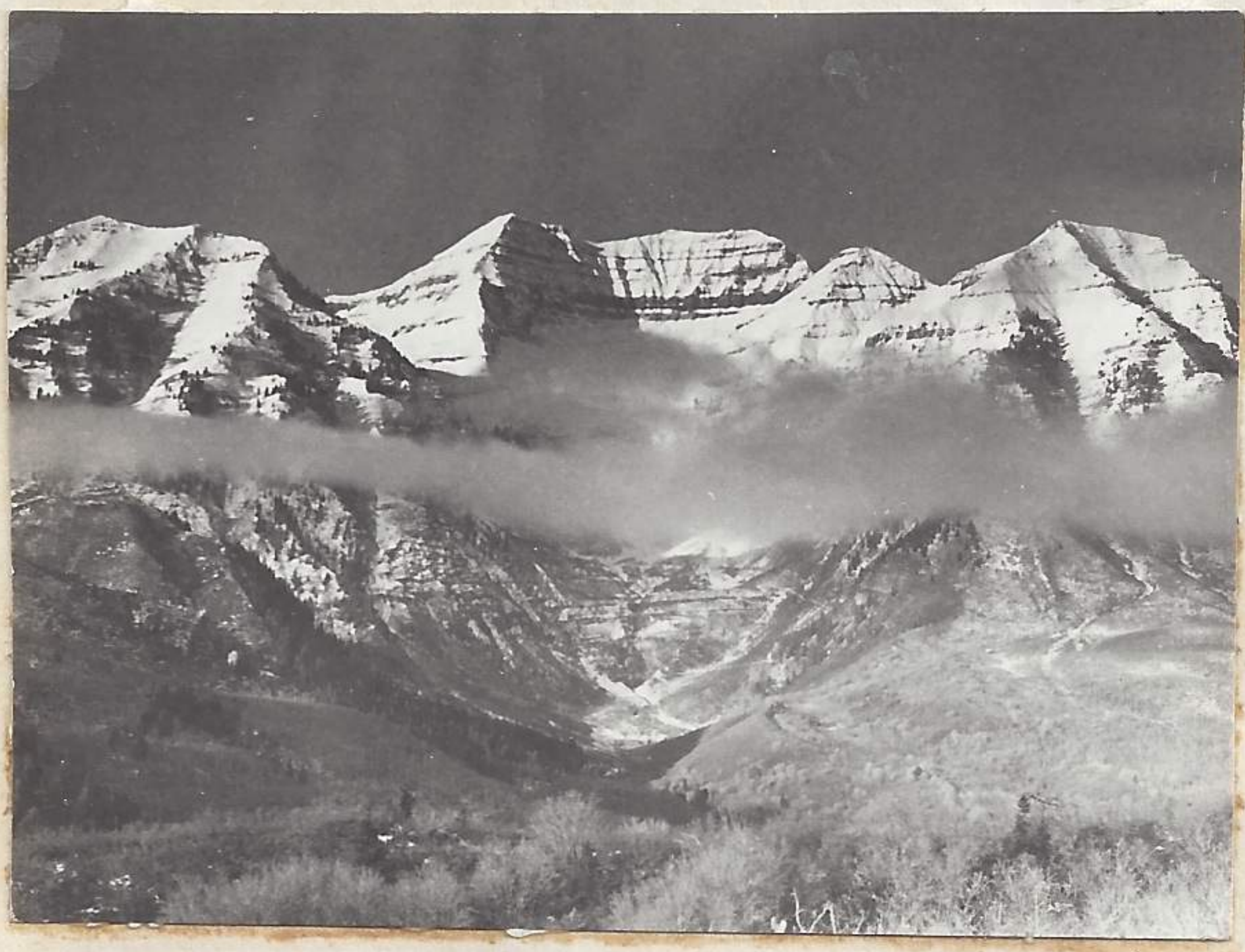


4-10-20-37. Deer prize of trip
from aspen park about 2 miles
n.w of camp. Find one near here.

made of few observation on arrival at Camp site at Indian Springs.
Four G. Ruff Grouse near camp in evening. Small flocks of juncos
present. 3 Rocky mt. jays visited camp upon arrival. The S.C. jay
more in evidence than R. mt. jay. Microtus (?) active in sagebrush
at 5:30 P.M. Scurus calling in trees at camp. One robin visited us
and the chickadees not uncommon. (see photo opposite page)

(insert) 12/2/37 (see previous page for proper entry)

Including here at this date two pictures taken sometime during the
spring of 1937 but do not have date. They are both of the east



1-12-2-37



2-12-2-37

exposure of mt. Timpanogas and taken from the Deer Creek Ridge
Picture (1-12-2-37) (see p. 821 for enlargement) shows the morning fog clouds lifting from the
Stewarts Flats. Alpine heights and winter above with spring creeping
up the base of the mountain. Picture (2-12-2-37) of a similar setting.